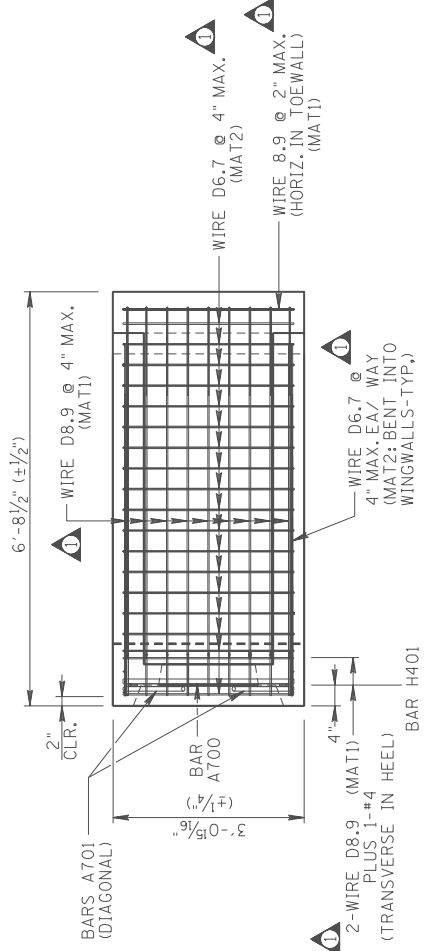


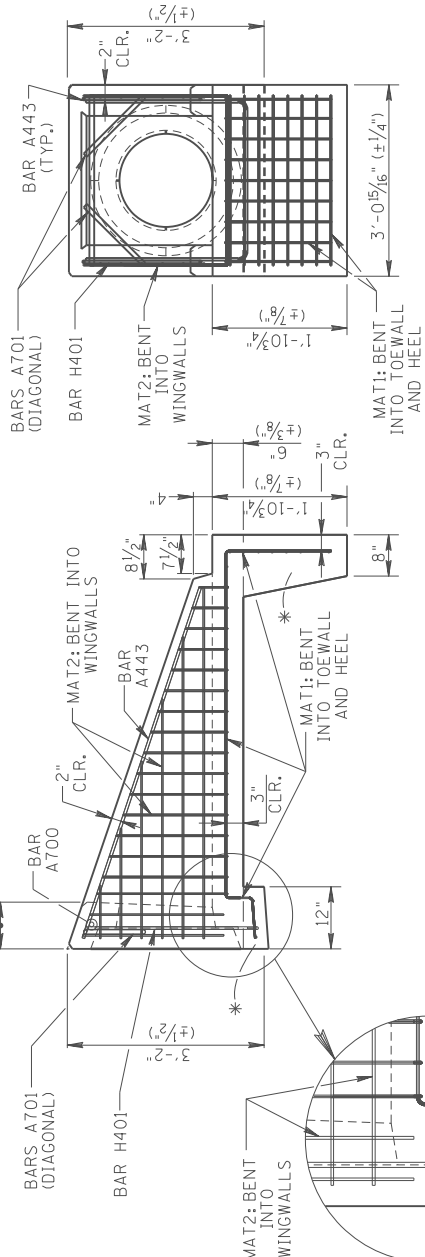
**ISOMETRIC VIEW**  
SHOWING DIMENSIONS, 3:1 SLOPE

**GENERAL NOTES**

1. SPECIFICATIONS: TDOT 2006 EDITION WITH CURRENT ADDENDA
2. DESIGN SPECIFICATIONS: AASHTO LRFD SPECIFICATIONS, CURRENT EDITION.
3. CONCRETE TO BE CLASS "A", F<sub>c</sub>=4,500 P.S.I.
4. REINFORCING STEEL PROVIDED AS RE-BAR TO BE IN ACCORDANCE WITH ASTM A615, F<sub>y</sub>=60,000 P.S.I./.
5. REINFORCING STEEL PROVIDED AS WELDED WIRE REINFORCEMENT (WWR) TO BE IN ACCORDANCE WITH ASTM A1064, DEFORMED WIRE WITH F<sub>y</sub>-MIN=70,000 P.S.I./.
6. WELDED WIRE REINFORCEMENT SHALL BE PROVIDED IN 2 CUSTOM MATS. WHEN COMBINED, MATS SHALL PROVIDE REQUIRED WIRES AT A MAXIMUM SPACING OF 4" EACH WAY.  
THE TWO CUSTOM MATS SHALL BE BENT AS REQUIRED TO REINFORCE WALLS, HEEL AND TROUGH.
7. SEE TDOT STANDARD DRAWING NOS. D-PE-18A AND D-PE-18B FOR ADDITIONAL CONSTRUCTION REQUIREMENTS.
8. BAR BENDS FOR RE-BAR SHALL BE IN ACCORDANCE WITH CRSI MANUAL OF STANDARD PRACTICE.
9. BENDS FOR WELDED WIRE FABRIC SHALL BE IN ACCORDANCE WITH THE MANUAL OF STANDARD PRACTICE AS PUBLISHED BY THE WIRE REINFORCEMENT INSTITUTE.



**BOTTOM SLAB PLAN**  
3:1 SLOPE



**WINGWALL ELEVATION**  
3:1 SLOPE

\*: HEEL AND TOE ARE TO BE CAST AS SECONDARY POURS ONTO BOTTOM OF BOTTOM SLAB.

**END ELEVATION**  
3:1 SLOPE

⚠️ 11-20-14: CHANGED ALL AREAS OF STEEL TO BE 3/16" STD.  
09-11-14: TDOT REVIEW

