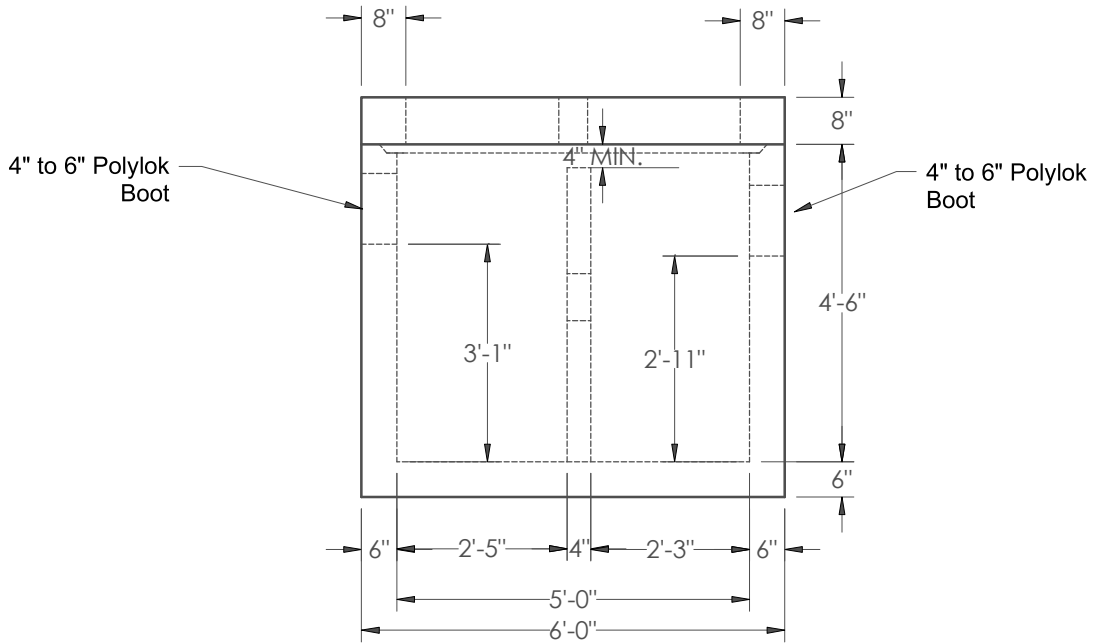
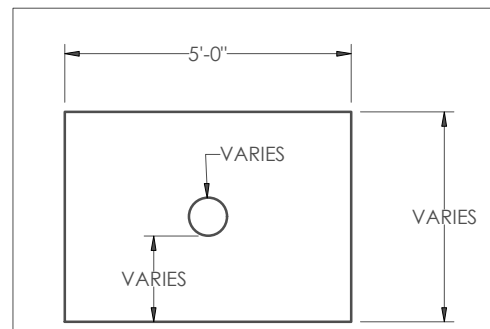


PLAN



ELEVATION



4" BAFFLE WALL

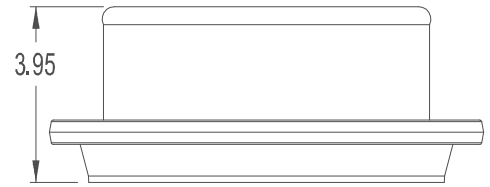
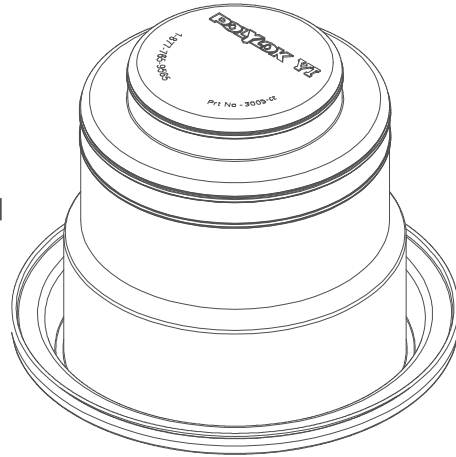
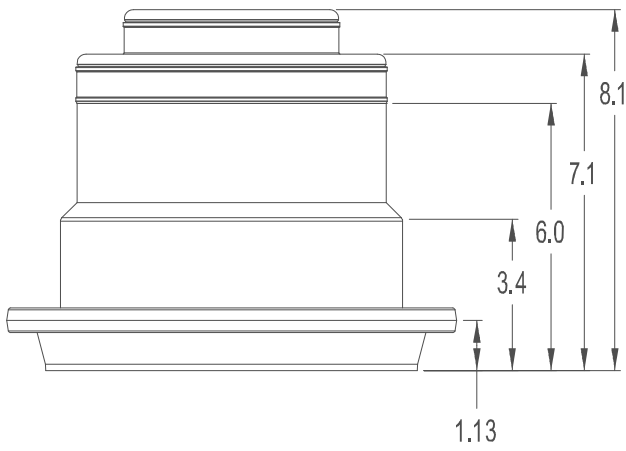
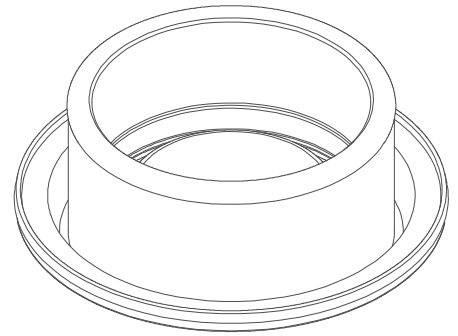
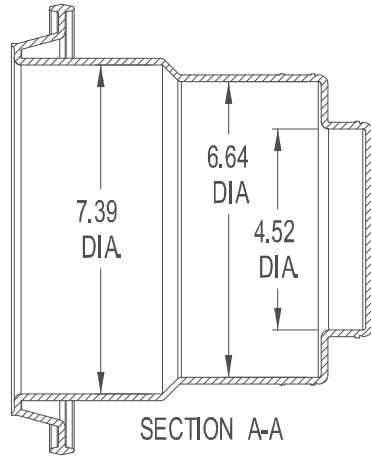
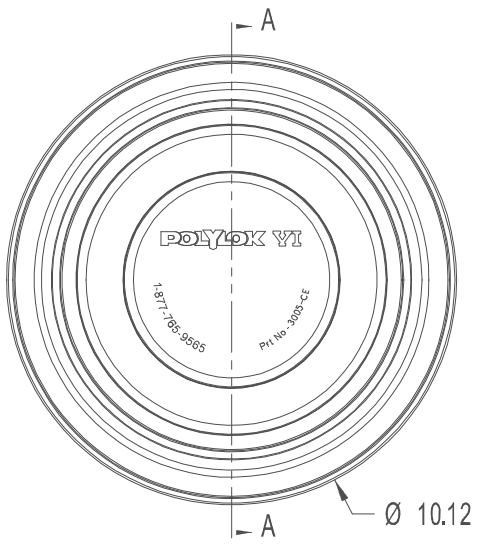
NOTES:

1. CONCRETE STRENGTH = 5000 PSI @ 28 DAYS MINIMUM
2. MANUFACTURED PER ASTM C1613
3. STRUCTURE DESIGN FOR HS-20 LOADING W/ 0 TO 2 FT. COVER AND ASSUMED WATER TABLE DEPTH 3 FT.
4. REINFORCEMENT:
 - TOP: #5 BAR @ 6" O.C.E.W.
 - WALLS: HORIZONTAL: # 4 BAR @ 12" O.C.
 - VERTICAL: #5 BAR @ 12" O.C.
 - SLAB: # 5 BAR @ 12" O.C.E.W.
5. 26" HOLES IN TOP FOR EJ 1337 R/ C (GREASE TRAP)(CAST-IN DESIGN AVAILABLE)
6. BASE WEIGHT = 5.1 TON
7. TOP WEIGHT = 1.8 TON
8. BAFFLE WALL WEIGHT =MAX.0.5 TON



DWG. NO.	
SCALE	NTS

TITLE	FPC SUBMITTAL DRAWING FOR 500 GAL OIL/GRIT INTERCEPTOR	
DATE	10-03-2013	DRAWN BY GT



COLLAPSED BOOT

POLYLOK TYPE VI 4" - 6" BOOT SEAL
PART NO. 3005-CE
MATERIAL - RUBBER