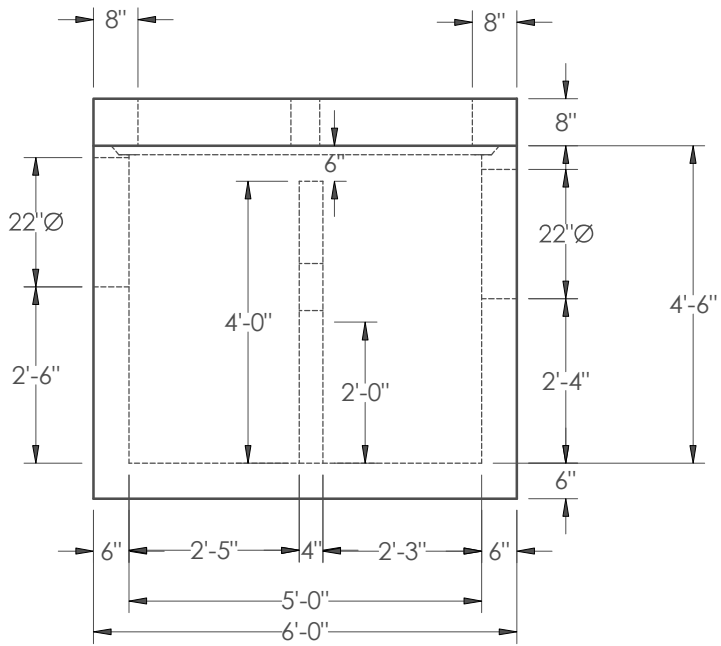


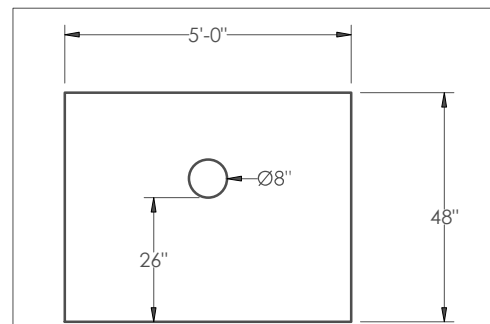
PLAN




ELEVATION

NOTES:

1. CONCRETE STRENGTH = 5000 PSI @ 28 DAYS MINIMUM
2. MANUFACTURED PER ASTM C1613
3. STRUCTURE DESIGN FOR HS-20 LOADING W/ 0 TO 2 FT. COVER AND ASSUMED WATER TABLE DEPTH 3 FT.
4. REINFORCEMENT:
 TOP: #5 BAR @ 6" O.C.E.W.
 WALLS: HORIZONTAL: # 4 BAR @ 12" O.C.
 VERTICAL: #5 BAR @ 12" O.C.
 SLAB: # 5 BAR @ 12" O.C.E.W.
5. 26" HOLES IN TOP FOR EJ 1337 R/ C (GREASE TRAP)(CAST-IN DESIGN AVAILABLE)
6. BASE WEIGHT = 4.96 TON
7. TOP WEIGHT = 1.8 TON
8. BAFFLE WALL WEIGHT = 0.50 TON



4" BAFFLE WALL

	DWG. NO.	TITLE	FPC SUBMITTAL DRAWING FOR 400 GAL OIL/GRIT INTERCEPTOR
	SCALE	DATE	DRAWN BY
	NTS	06-22-2017	GET