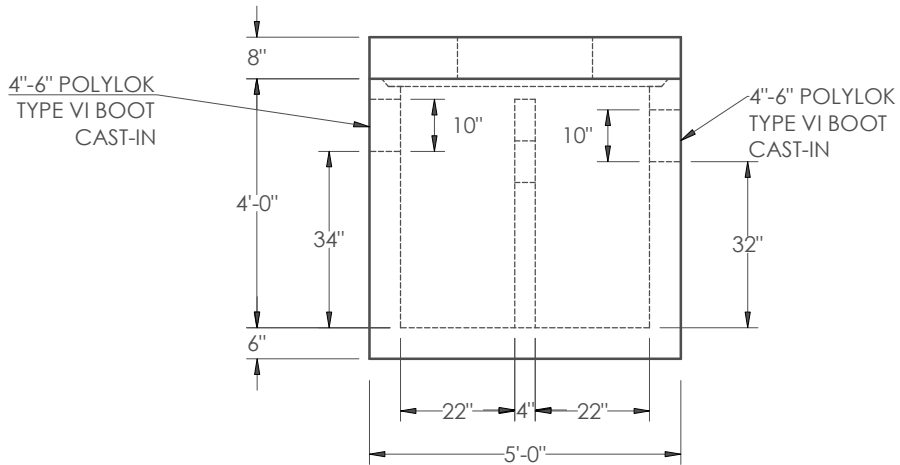


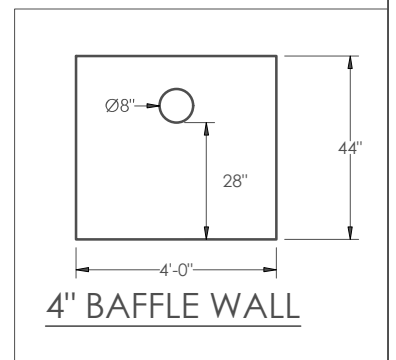
PLAN




ELEVATION

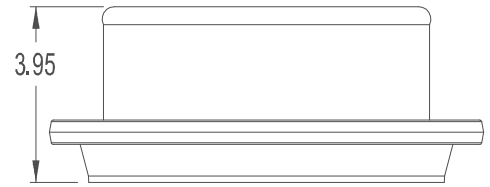
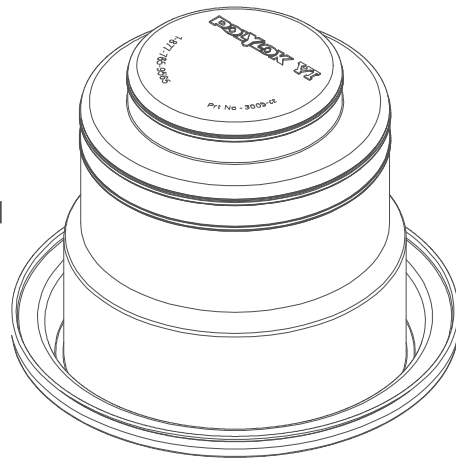
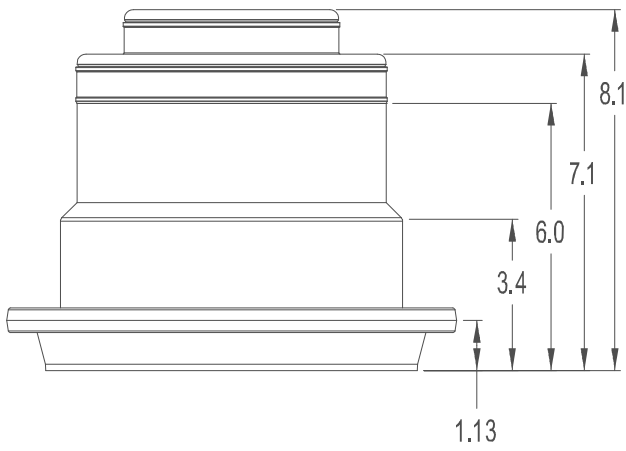
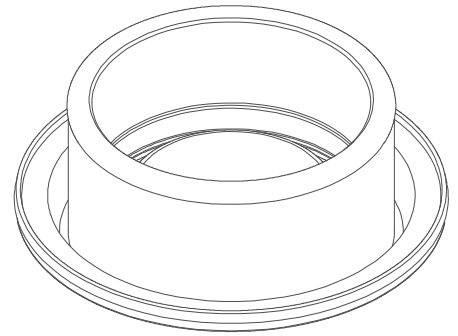
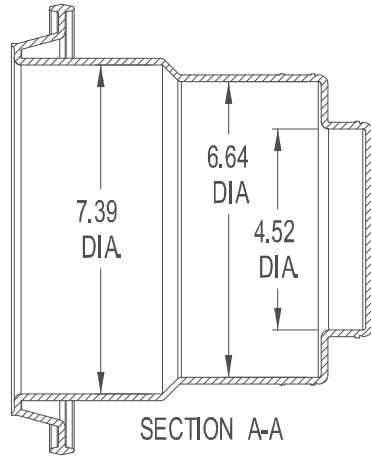
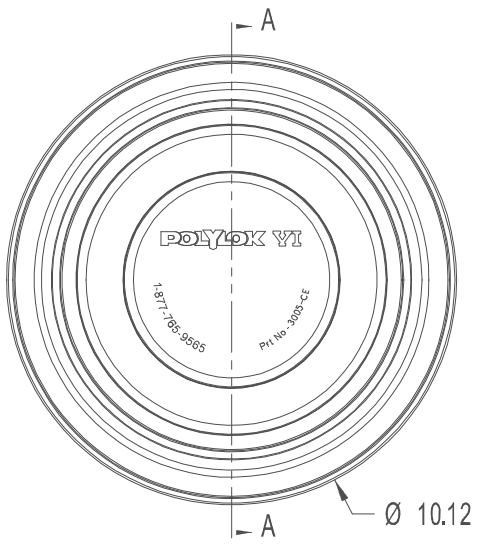
NOTES:

1. CONCRETE STRENGTH = 5000 PSI @ 28 DAYS MINIMUM
2. MANUFACTURED PER ASTM C1613
3. STRUCTURE DESIGN FOR HS-20 LOADING W/ 0 TO 2 FT. COVER AND ASSUMED WATER TABLE DEPTH 3 FT.
4. REINFORCEMENT:  
 SLAB & WALLS: # 5 BAR @ 12" O.C.E.W.  
 8" TOP: #5 BAR @ 6" O.C.E.W.
5. 26" HOLES IN TOP FOR EJ 1337 R/ C (GREASE TRAP) (CAST-IN DESIGN AVAILABLE)
6. BASE WEIGHT = 3.6 TON
7. TOP WEIGHT = 1.26 TON
8. BAFFLE WALL WEIGHT = 0.4 TON



4" BAFFLE WALL

	DWG. NO. GT TANKS_300GAL.DWG	TITLE FPC SUBMITTAL DRAWING FOR 300 GAL GT	
	SCALE NTS	DATE 05-22-2017	DRAWN BY GT



COLLAPSED BOOT

POLYLOK TYPE VI 4" - 6" BOOT SEAL  
PART NO. 3005-CE  
MATERIAL - RUBBER