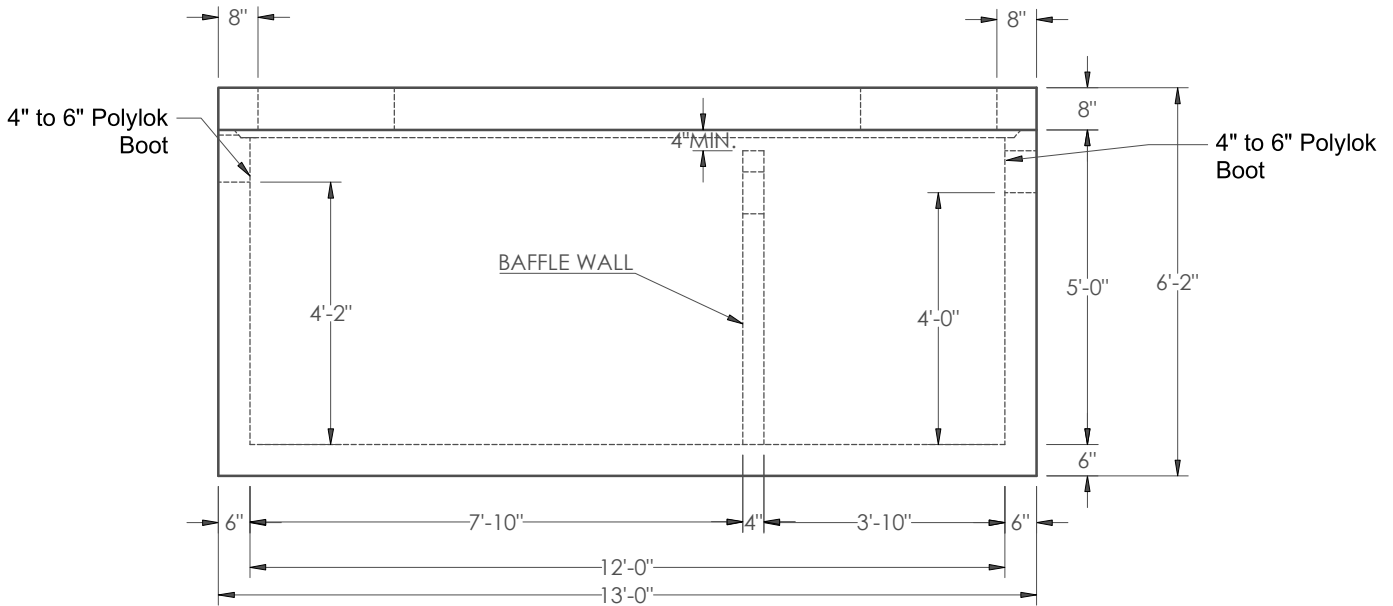


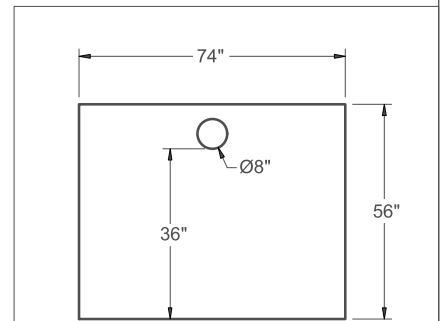
PLAN




ELEVATION

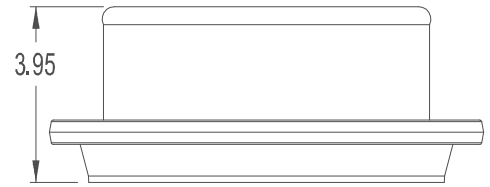
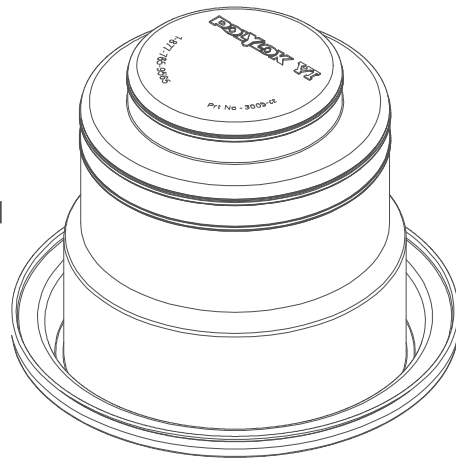
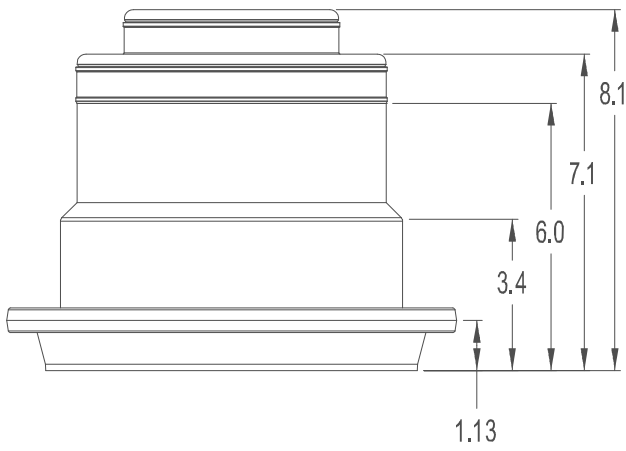
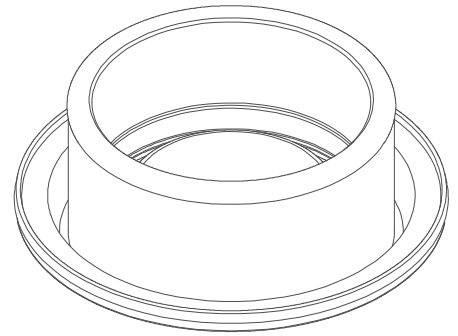
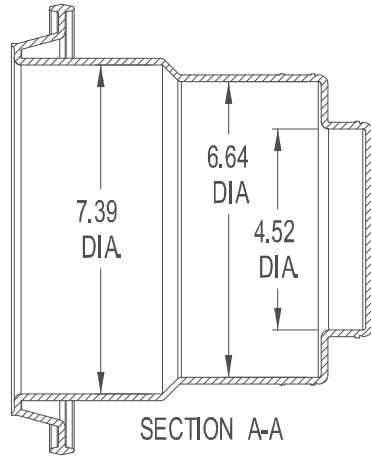
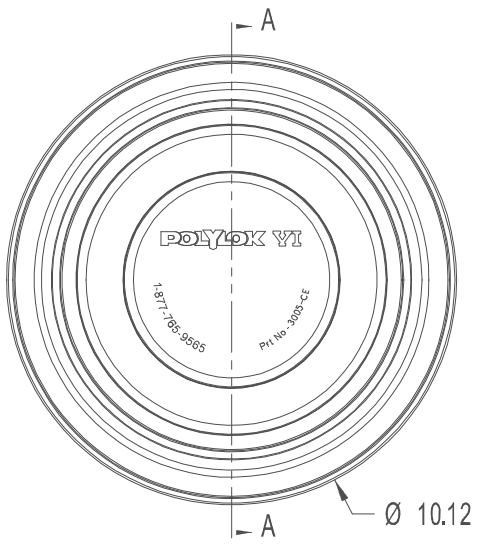
NOTES:

1. CONCRETE STRENGTH = 5000 PSI @ 28 DAYS MINIMUM
2. MANUFACTURED PER ASTM C1613
3. STRUCTURE DESIGN FOR HS-20 LOADING W/ 0 TO 2 FT. COVER AND ASSUMED WATER TABLE DEPTH 3 FT.
4. REINFORCEMENT:
 - TOP: #6 BAR @ 6" O.C. SHORT DIRECTION
#5 BAR @ 10" O.C. LONG DIRECTION
 - WALLS: #5 BAR @ 8" O.C. (HORIZONTAL), #5 BAR @ 6" O.C. (VERTICAL).
 - SLAB: #5 BAR @ 6" O.C. SHORT DIRECTION
#5 BAR @ 12" O.C. LONG DIRECTION
5. 26" HOLES IN TOP FOR EJ 1337 R/ C (GREASE TRAP) (CAST-IN DESIGN AVAILABLE)
6. BASE WEIGHT = 10.5 TON
7. TOP WEIGHT = 4.5 TON
8. BAFFLE WALL WEIGHT = MAX. 0.7 TON



4" BAFFLE WALL

	DWG. NO.	TITLE	
	SCALE	DATE	DRAWN BY
	NTS	05-22-2017	GET
		FPC SUBMITTAL DRAWING FOR 2000 GAL G.T.	



COLLAPSED BOOT

POLYLOK TYPE VI 4" - 6" BOOT SEAL
PART NO. 3005-CE
MATERIAL - RUBBER