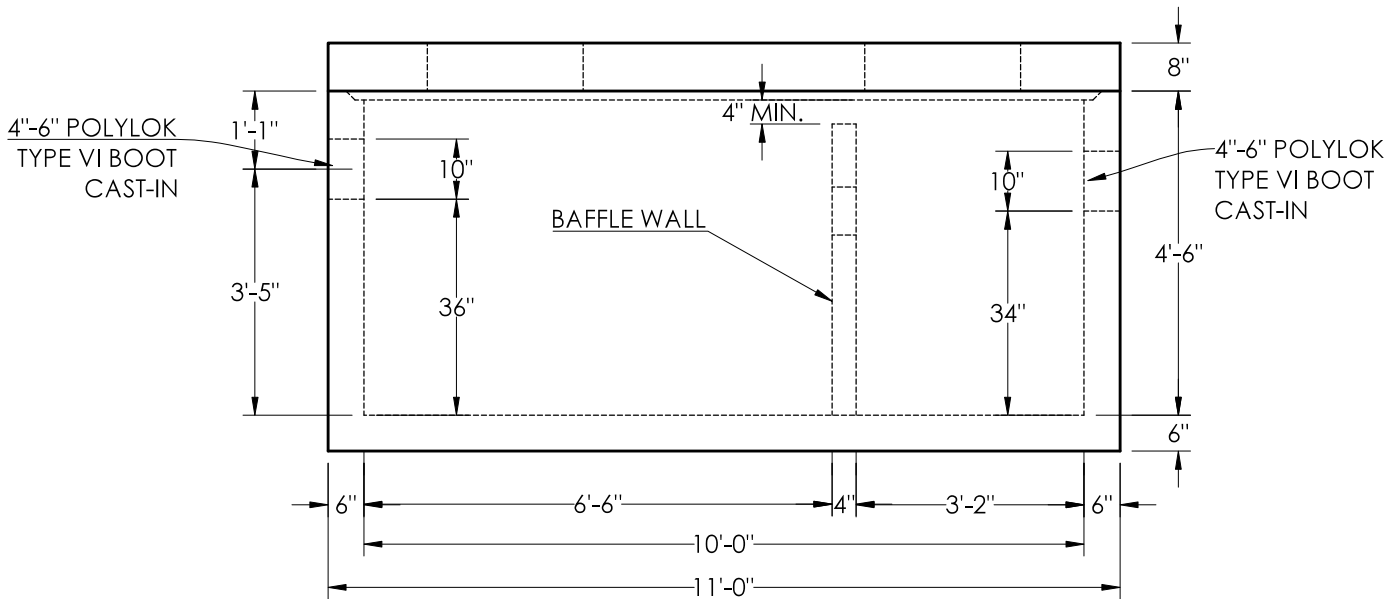


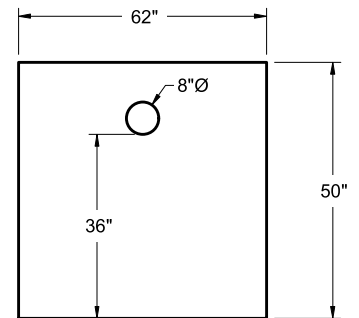
PLAN



ELEVATION

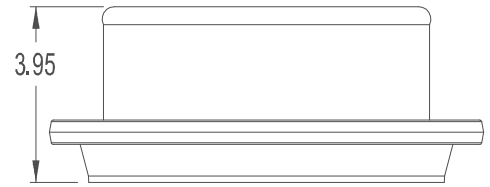
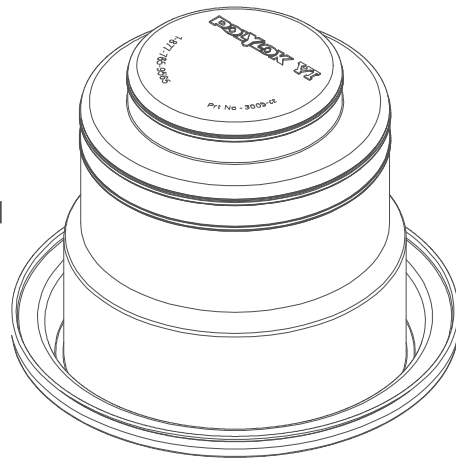
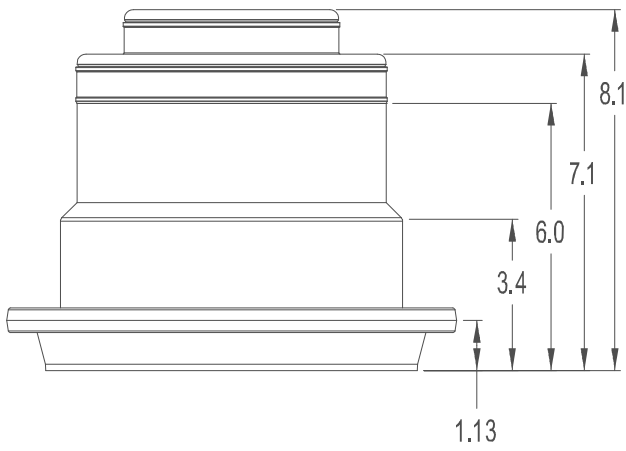
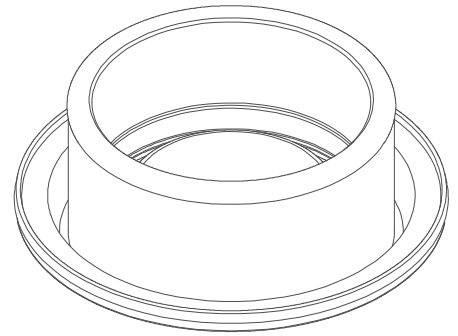
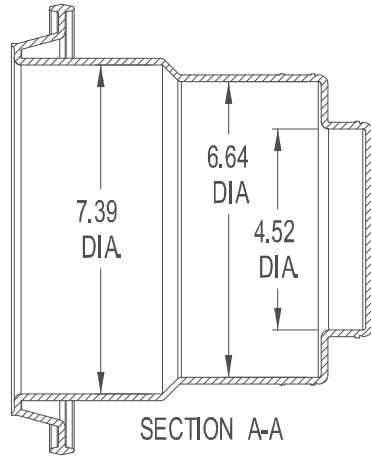
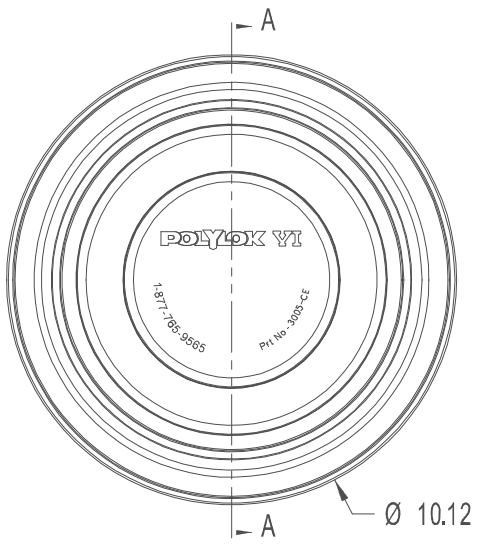
NOTES:

1. CONCRETE STRENGTH = 5000 PSI @ 28 DAYS MINIMUM
2. MANUFACTURED PER ASTM C1613
3. STRUCTURE DESIGN FOR HS-20 LOADING W/ 0 TO 2 FT. COVER AND ASSUMED WATER TABLE DEPTH 3 FT.
4. REINFORCEMENT:
 - TOP: #5 BAR @ 6" O.C. SHORT DIRECTION, 1 1/2" COVER
 - #5 BAR @ 12" O.C. LONG DIRECTION
 - WALLS: #5 BAR @ 8" O.C.E.W., 2" COVER
 - SLAB: #5 BAR @ 8" O.C.E.W. 1 1/2" COVER
5. 26" HOLES IN TOP FOR EJ 1337 R/ C (GREASE TRAP)(CAST-IN DESIGN AVAILABLE)
6. BASE WEIGHT = 7.88 TON
7. TOP WEIGHT = 3.48 TON
8. BAFFLE WALL WEIGHT = MAX. 0.54 TON



4" BAFFLE WALL
Scale 1/4"=1'-0"

	DWG. NO.	GT 1000 GAL 5X10 Form.dwg	TITLE	FPC SUBMITTAL DRAWING FOR 1000 GAL G.T.	
	SCALE	3/8" = 1'-0"	DATE	10-02-2020	DRAWN BY GET



COLLAPSED BOOT

POLYLOK TYPE VI 4" - 6" BOOT SEAL
PART NO. 3005-CE
MATERIAL - RUBBER