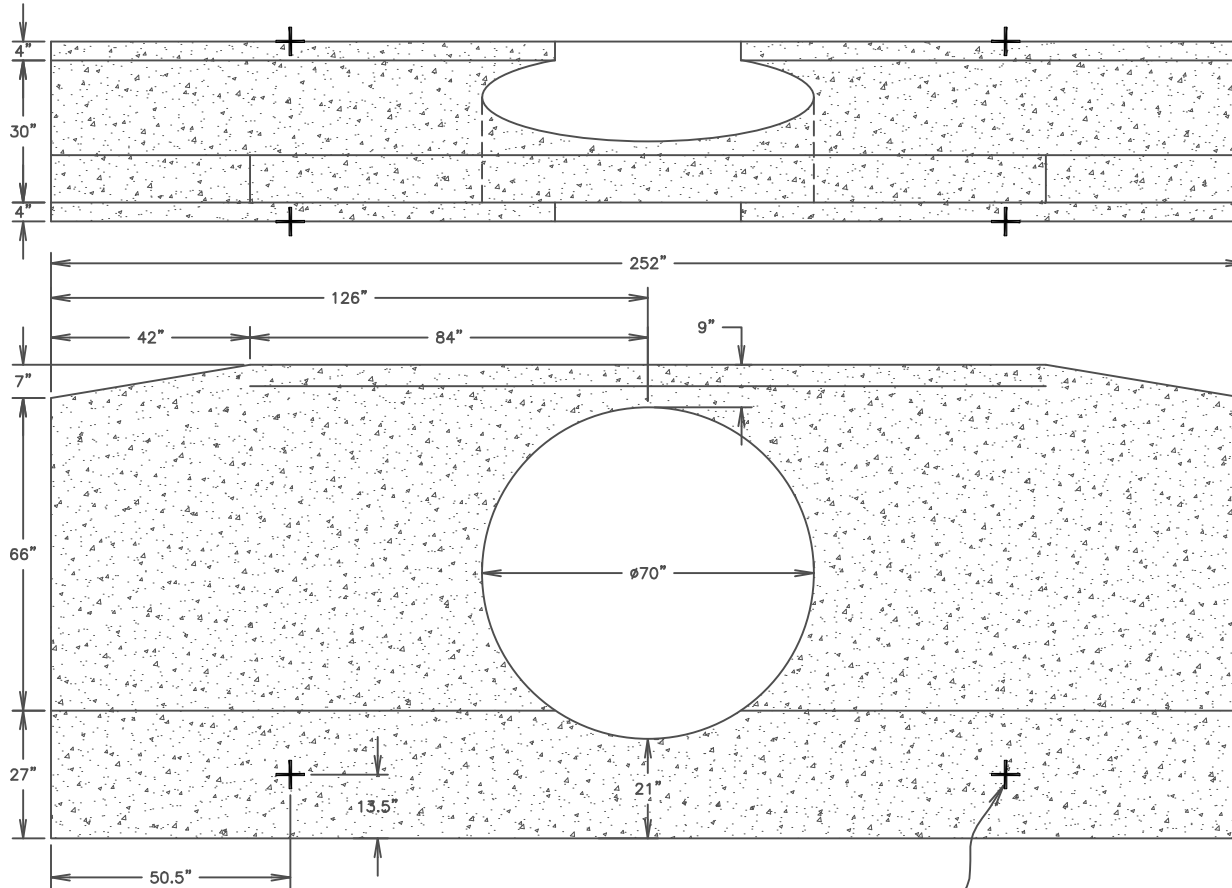
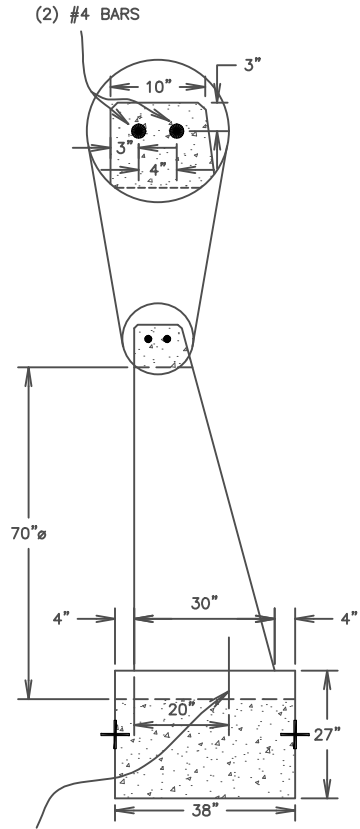


NOTE: DUE TO SIZE OF PRECAST HEADWALL, CONTRACTOR IS RESPONSIBLE FOR BEVELING FRONT OF HEADWALL ONSITE AFTER PIPE INSTALLATION TO MEET 6" TAPER REQUIRED BY FDOT INDEX# 430-030.

ALL EXPOSED EDGES OF ENDWALL TO HAVE 3/4" CHAMFER



(4) WIRE ROPE LIFTERS, 7.9 TON CAP. EACH
(TWO ON EACH FACE OF THE FOOTING)




KEYWAY DOWELS REQUIRED FOR CONSTRUCTION JOINTS:
#4 BARS, 18" W/9" EMBEDMENT @ 12" O.C.

NOTES:

1. CONCRETE: 4,000 PSI, TYPE I/II CEMENT
2. GRADE 60 REINFORCEMENT ASTM A615
5. REINFORCEMENT TO BE #4 BARS @ 12" O.C. UNLESS OTHERWISE NOTED.
6. DUE TO THE FRAGILE NATURE OF THE HEADWALLS, THE CUSTOMER IS RESPONSIBLE FOR PRODUCT IF IT BREAKS DURING HANDLING, TRANSPORTATION OR SETTING.
7. SEE FDOT INDEX #430-030 FOR MORE INFORMATION

APPROXIMATED WEIGHT:
54" EW: 46,680 lb

	DWG. NO. SINGLE 54" RCP STRAIGHT ENDWALL - FDOT #430-030		PROJECT 54" RCP SINGLE ENDWALL - FDOT #430-030		DATE 5/17/2024	
	SCALE NTS	PROJECT #	CUSTOMER		DRAWN BY DS	