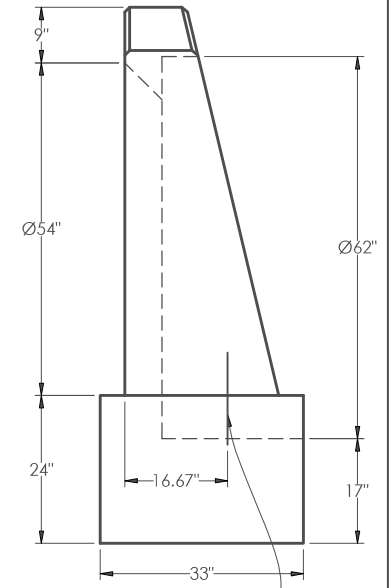
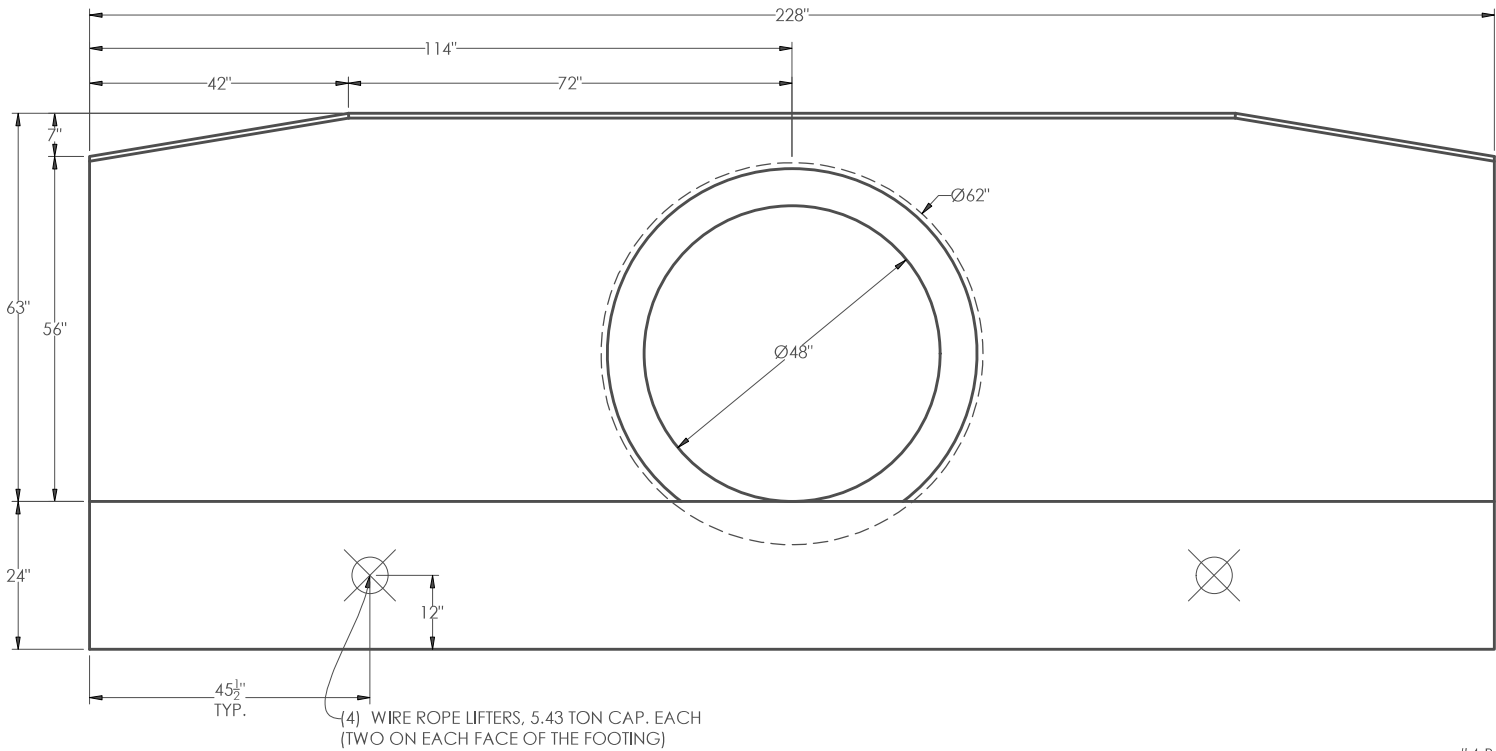
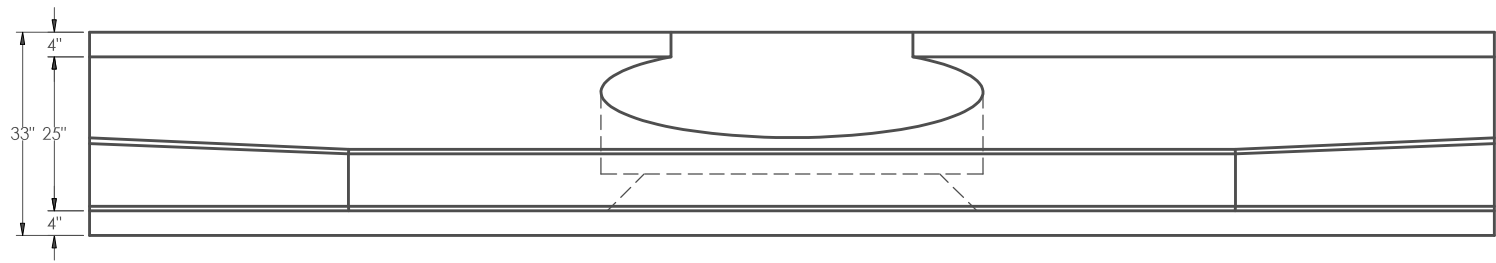


ALL EXPOSED EDGES OF ENDWALL TO HAVE 3/4" CHAMFER



KEYWAY DOWELS REQUIRED FOR CONSTRUCTION JOINTS:
#4 BARS, 18" W/9" EMBEDMENT @ 12" O.C.

NOTES:

1. CONCRETE: 4,000 PSI, TYPE I/II CEMENT
2. GRADE 60 REINFORCEMENT ASTM A615
3. REFER TO REINFORCEMENT DETAIL SHEET FOR REBAR LOCATION.
4. DUE TO THE FRAGILE NATURE OF THE HEADWALLS, THE CUSTOMER IS RESPONSIBLE FOR PRODUCT IF IT BREAKS DURING HANDLING, TRANSPORTATION OR SETTING.
5. SEE FDOT INDEX #430-030 FOR MORE INFORMATION

APPROXIMATED WEIGHT:
48" EW: 32,523 lb



DWG. NO. SINGLE 48" RCP STRAIGHT ENDWALL - FDOT #430-030	PROJECT #
SCALE NTS	PROJECT #

PROJECT 48" RCP SINGLE ENDWALL	DATE 2/24/2025
CUSTOMER	DRAWN BY DS