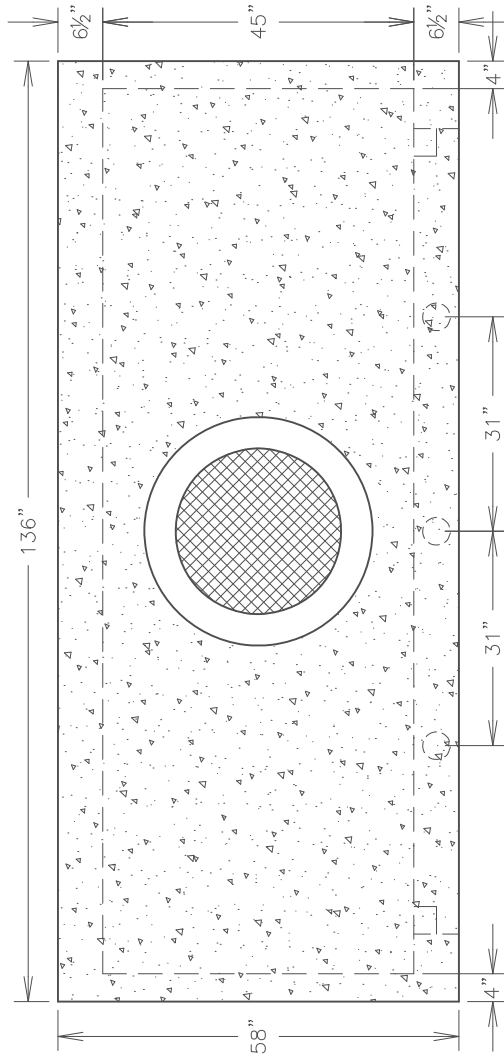


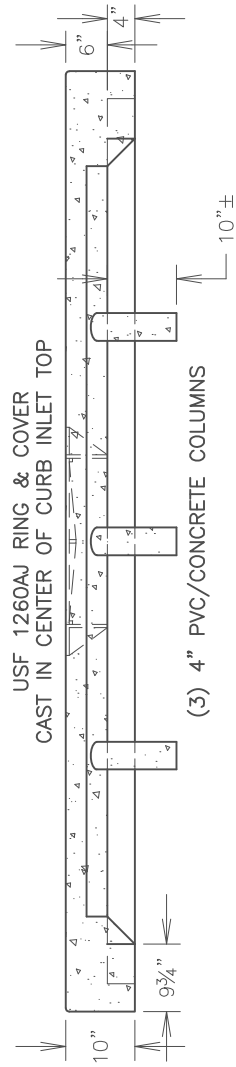
TOP VIEW



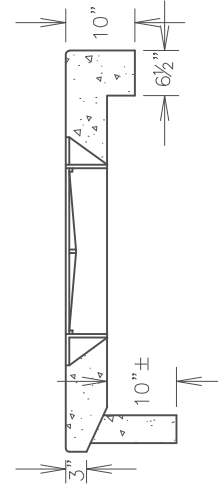
APPROX. WT: 4,600 lbs±

REINFORCEMENT:  
AREA 0.20 WWF W/ #4 BARS  
AROUND RING & COVER

FRONT VIEW



SIDE SECTION VIEW



NOT TO SCALE  
DIMENSIONS SUBJECT TO  
SITE SPECIFIC CHANGES.

PRODUCT

ESCAMBIA COUNTY CURB INLET  
TYPE "A" - STANDARD STYLE



DATE

11/08/17

SECTION.PAGE

01 OF 01