

OPTIONAL FLAT TOP (752 lbs)

**WEIGHTS - MAX.**

12" RISER:	800 lbs.
18" RISER:	1,200 lbs.
24" RISER:	1,600 lbs.
30" RISER:	2,000 lbs.
36" RISER:	2,400 lbs.
42" RISER:	2,800 lbs.
48" RISER:	3,200 lbs.
54" RISER:	3,600 lbs.
60" RISER:	4,000 lbs.

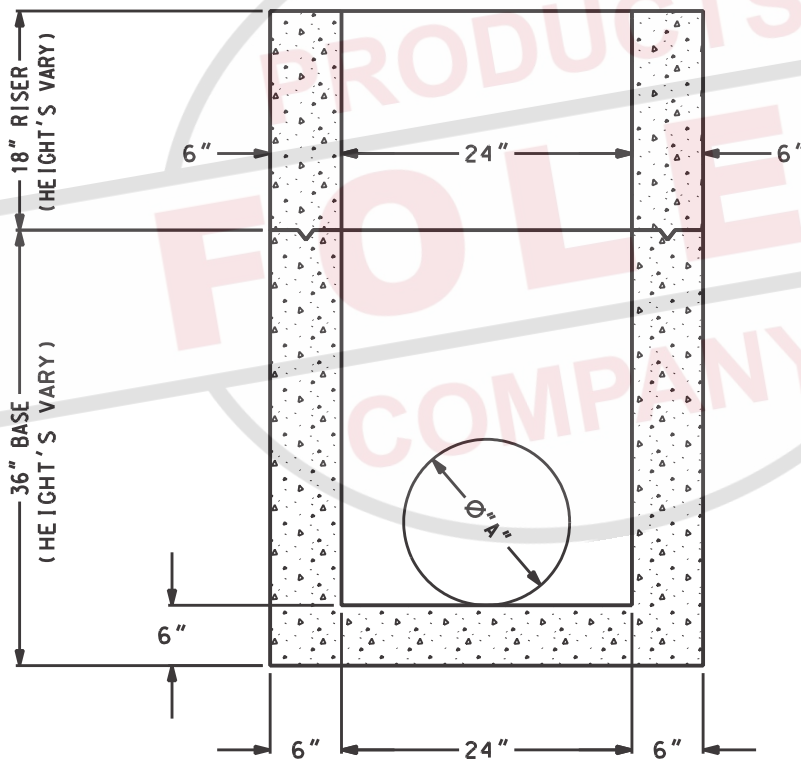
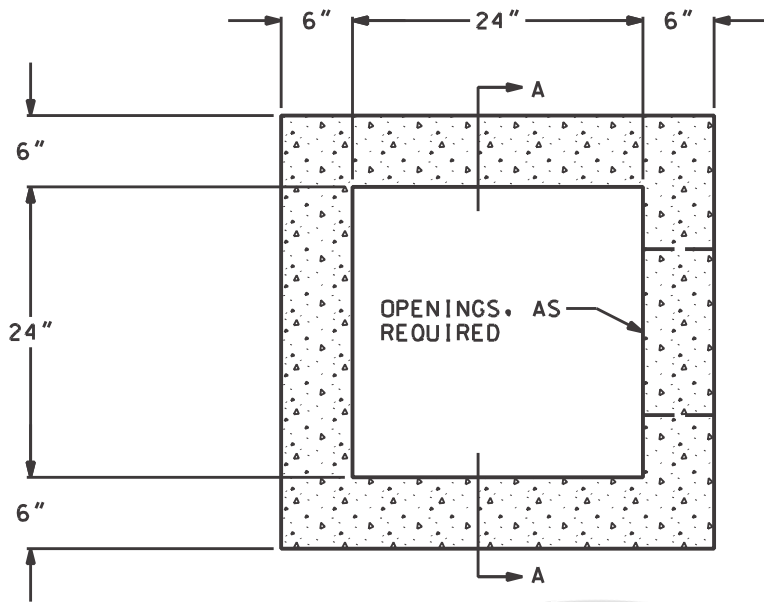
24" BASE:	1,854 lbs.
30" BASE:	2,254 lbs.
36" BASE:	2,654 lbs.
42" BASE:	3,054 lbs.
48" BASE:	3,454 lbs.
54" BASE:	3,854 lbs.
60" BASE:	4,254 lbs.
66" BASE:	4,654 lbs.
72" BASE:	5,054 lbs.

**SECTION A-A**

DIMENSION "A"  
AS REQUIRED



HERMITAGE, TN LENOIR CITY, TN  
FRANKLIN, TN CHATANOOGA, TN



SECTION A-A

**WEIGHTS - MAX.**

12" RISER	= 700 LBS.
18" RISER	= 1,050 LBS.
24" RISER	= 1,400 LBS.
30" RISER	= 1,750 LBS.
36" RISER	= 2,100 LBS.
42" RISER	= 2,450 LBS.
48" RISER	= 2,800 LBS.
54" RISER	= 3,150 LBS.
60" RISER	= 3,500 LBS.
24" BASE	= 1,737 LBS.
30" BASE	= 2,087 LBS.
36" BASE	= 2,450 LBS.
42" BASE	= 2,787 LBS.
48" BASE	= 3,137 LBS.
54" BASE	= 3,487 LBS.
60" BASE	= 3,837 LBS.
66" BASE	= 4,187 LBS.
72" BASE	= 4,537 LBS.

**GENERAL NOTES:**

1. ALL MATERIAL, DESIGN, MANUFACTURE, PHYSICAL TEST REQUIREMENTS, FINISH MARKING, INSPECTION, REJECTION AND REPAIRS TO MEET "STANDORD SPECIFICATIONS FOR PRECAST CONCRETE WATER AND WASTEWATER STRUCTURES", PER ASTM C-913 (LATEST REVISION).

DIMENSION "A"  
AS REQUIRED



HERMITAGE, TN LENOIR CITY, TN  
FRANKLIN, TN CHATANOOGA, TN

24" x 24" CATCH BASIN ( 6" WALL )

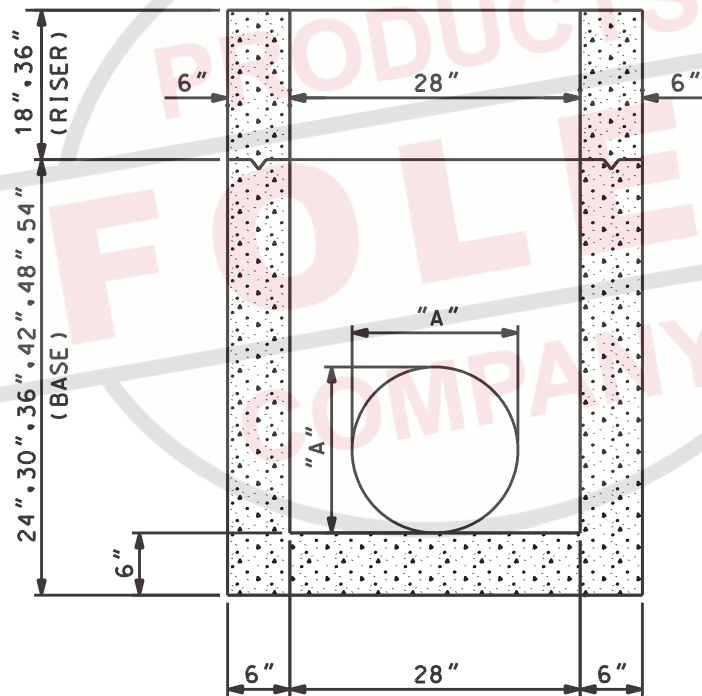
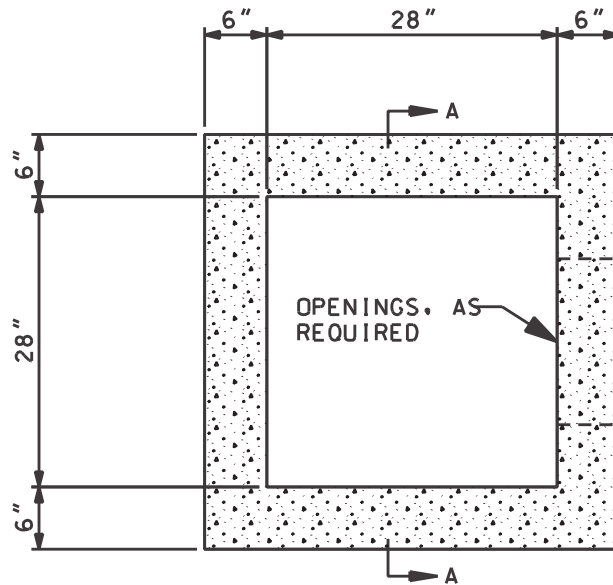
SCALE: NTS

PH# 1-800-737-0707

DWG# SRS-501

DATE: 09/12/08

SHEET# 1 OF 1



DIMENSION "A"  
AS REQUIRED

SECTION A-A

WEIGHTS - MAX.  
18" RISER: 1,278 lbs.  
36" RISER: 2,556 lbs.

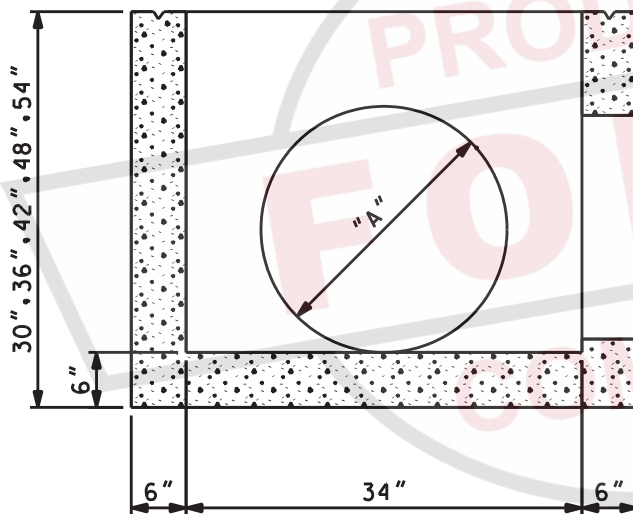
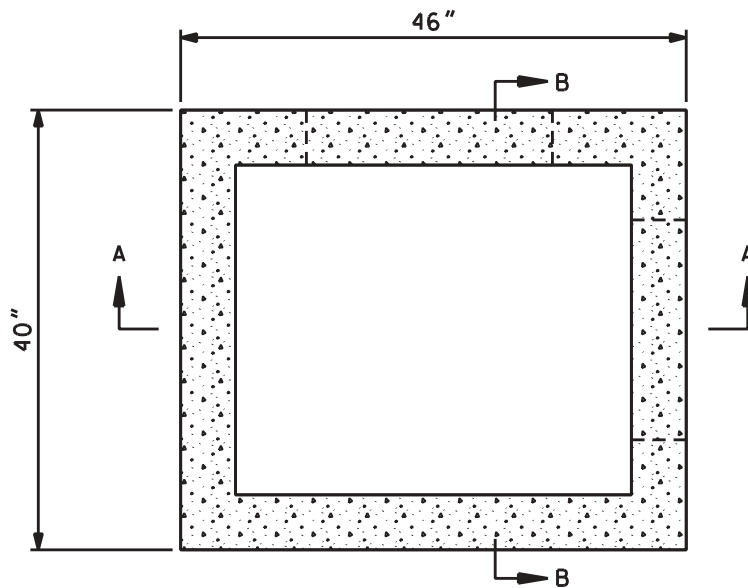
24" BASE: 2,114 lbs.  
30" BASE: 2,534 lbs.  
36" BASE: 2,954 lbs.  
42" BASE: 3,379 lbs.  
48" BASE: 3,876 lbs.  
54" BASE: 4,364 lbs.

GENERAL NOTES:

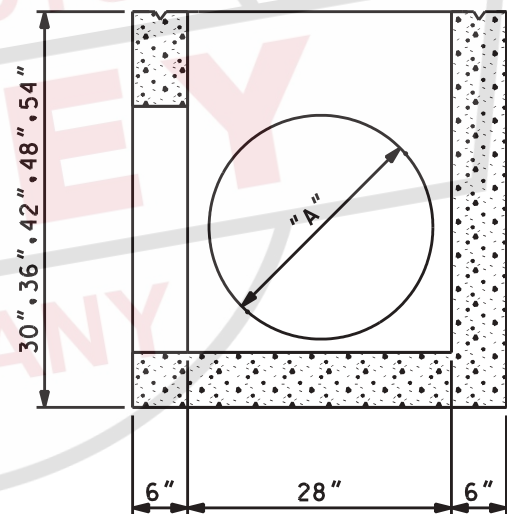
1. ALL MATERIAL, DESIGN, MANUFACTURE, PHYSICAL TEST REQUIREMENTS, FINISH MARKING, INSPECTION, REJECTION, AND REPAIRS TO MEET "STANDARD SPECIFICATIONS FOR PRECAST CONCRETE WATER AND WASTEWATER STRUCTURES", PER ASTM C-913 (LATEST REVISION).



HERMITAGE, TN LENOIR CITY, TN  
FRANKLIN, TN CHATANOOGA, TN



SECTION A-A



SECTION B-B

DIMENSION "A"  
AS REQUIRED

WEIGHTS - MAX.

30" BASE: 2,905 lbs.  
36" BASE: 3,368 lbs.  
42" BASE: 3,830 lbs.  
48" BASE: 4,293 lbs.  
54" BASE: 4,755 lbs.

GENERAL NOTES:

1. ALL MATERIAL, DESIGN, MANUFACTURE, PHYSICAL TEST REQUIREMENTS, FINISH MARKING, INSPECTION, REJECTION AND REPAIRS TO MEET "STANDARD SPECIFICATIONS FOR PRECAST CONCRETE WATER AND WASTEWATER STRUCTURES", PER ASTM C-913 (LATEST REVISION).



HERMITAGE, TN LENOIR CITY, TN  
FRANKLIN, TN CHATANOOGA, TN

28" x 34" CATCH BASIN

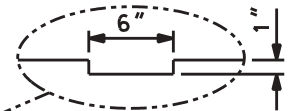
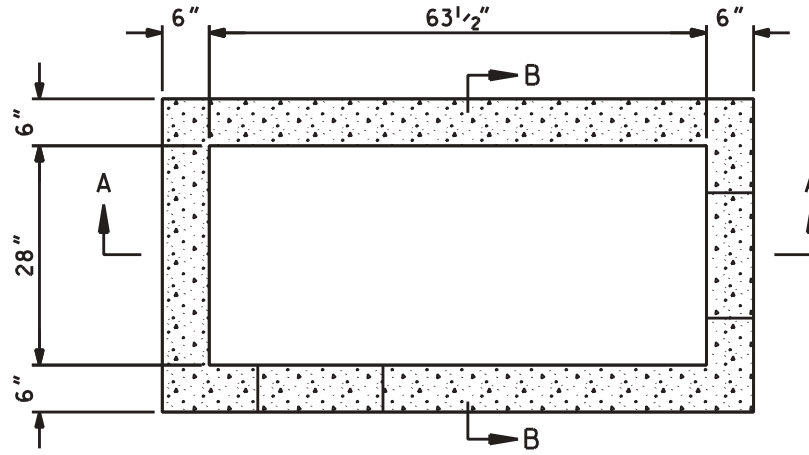
SCALE: NTS

PH\* 1-800-737-0707

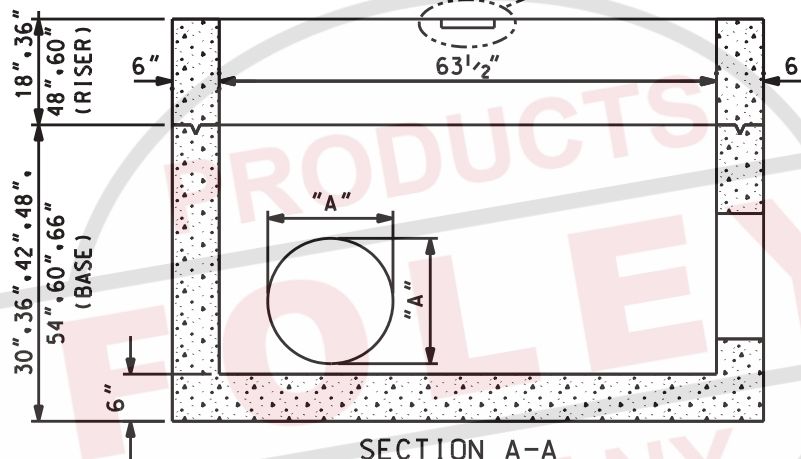
DWG# SRS-507

DATE: 09/12/08

SHEET# 1 OF 1



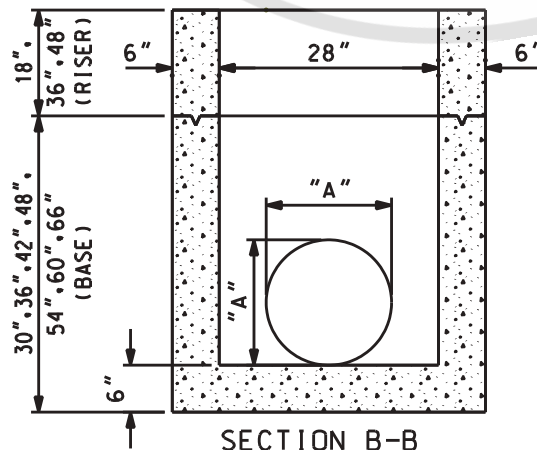
LINTLE NOTCH  
(BASE OR RISER)



SECTION A-A

**WEIGHTS - MAX.**

18" RISER:	1.940 lbs.
36" RISER:	3.880 lbs.
48" RISER:	5.173 lbs.
60" RISER:	6.465 lbs.

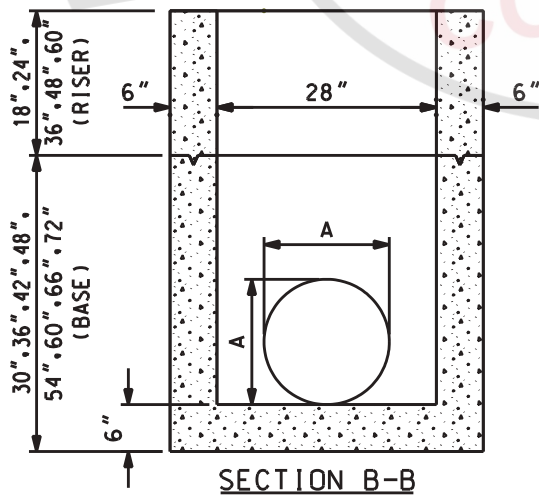
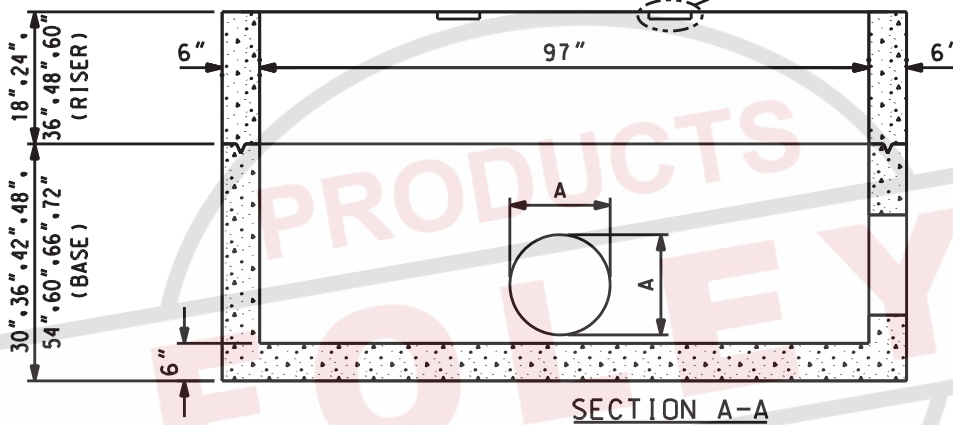
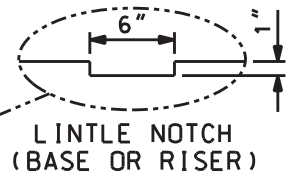
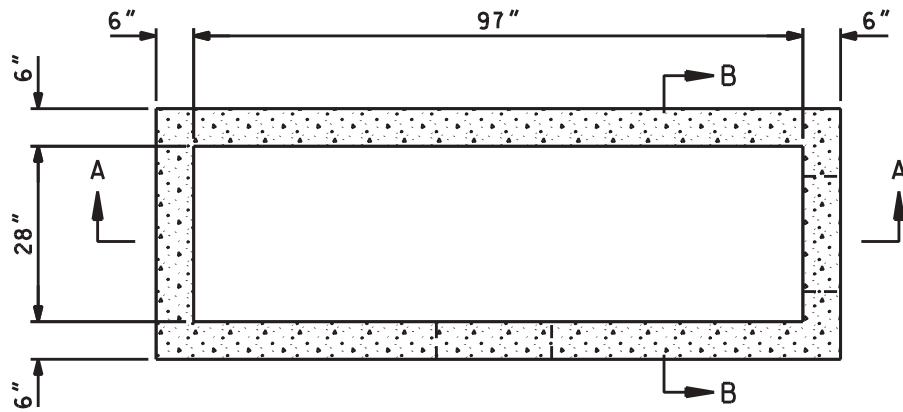


SECTION B-B

**WEIGHTS - MAX.**

30" BASE:	4.157 lbs.
36" BASE:	4.804 lbs.
42" BASE:	5.549 lbs.
48" BASE:	6.096 lbs.
54" BASE:	6.696 lbs.
60" BASE:	7.190 lbs.
66" BASE:	7.737 lbs.

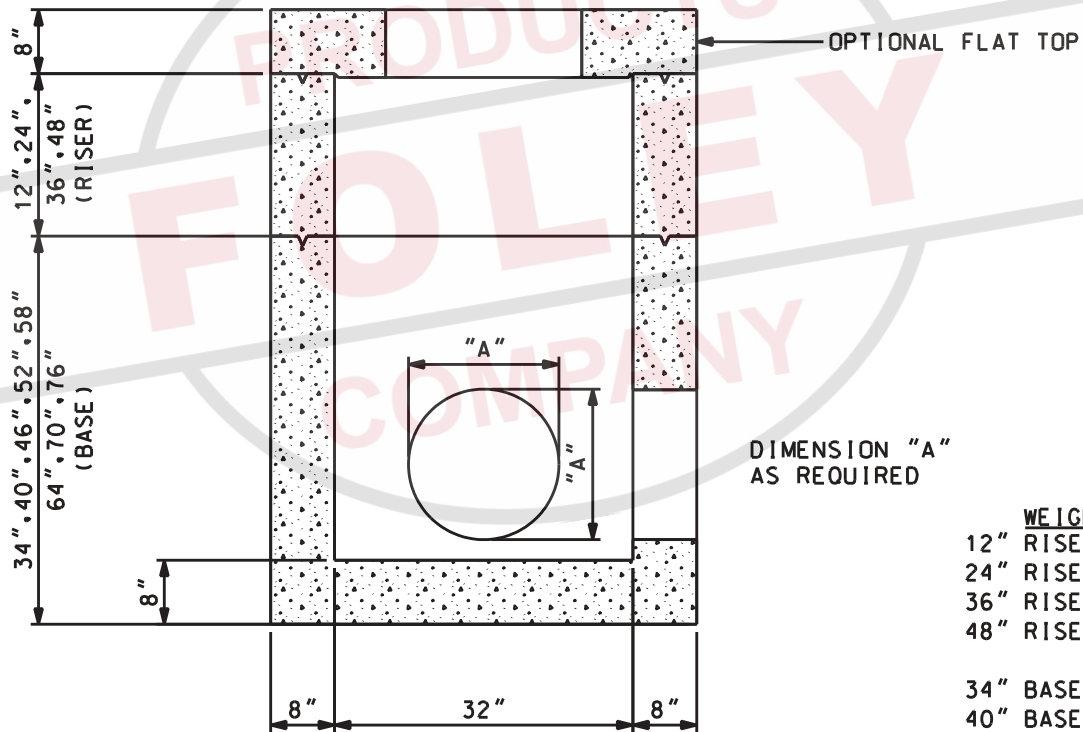
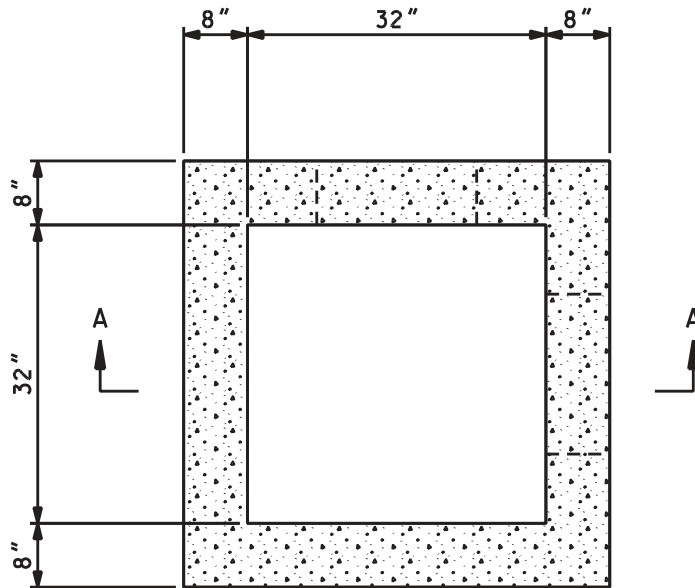
DIMENSION "A"  
AS REQUIRED



**WEIGHTS - MAX.**

18" RISER: 2.567 lbs.  
 24" RISER: 3.423 lbs.  
 36" RISER: 5.135 lbs.  
 48" RISER: 6.846 lbs.  
 60" RISER: 8.558 lbs.

30" BASE: 5.691 lbs.  
 36" BASE: 6.547 lbs.  
 42" BASE: 7.403 lbs.  
 48" BASE: 8.259 lbs.  
 54" BASE: 9.115 lbs.  
 60" BASE: 9.971 lbs.  
 66" BASE: 10.827 lbs.  
 72" BASE: 11.683 lbs.



SECTION A-A

#### GENERAL NOTES:

1. ALL MATERIAL, DESIGN, MANUFACTURE, PHYSICAL TEST REQUIREMENTS, FINISH MARKING, INSPECTION, REJECTION AND REPAIRS TO MEET "STANDARD SPECIFICATIONS FOR PRECAST CONCRETE WATER AND WASTEWATER STRUCTURES", PER ASTM C-913 (LATEST REVISION).

WEIGHTS - MAX.	
12" RISER:	1,335 lbs.
24" RISER:	2,670 lbs.
36" RISER:	4,005 lbs.
48" RISER:	5,340 lbs.
34" BASE:	4,494 lbs.
40" BASE:	5,160 lbs.
46" BASE:	5,827 lbs.
52" BASE:	6,500 lbs.
58" BASE:	7,159 lbs.
64" BASE:	7,825 lbs.
70" BASE:	8,490 lbs.
76" BASE:	9,190 lbs.

\* CAN BE UTILIZED AS TDOT STANDARD:  
D-CB-12LP, 25LP, 28LP, 38S, 41LP, 42S, D-JBS-1, D-SDS-1



HERMITAGE, TN LENOIR CITY, TN  
FRANKLIN, TN CHATANOOGA, TN

32"x 32" CATCH BASIN

SCALE: NTS

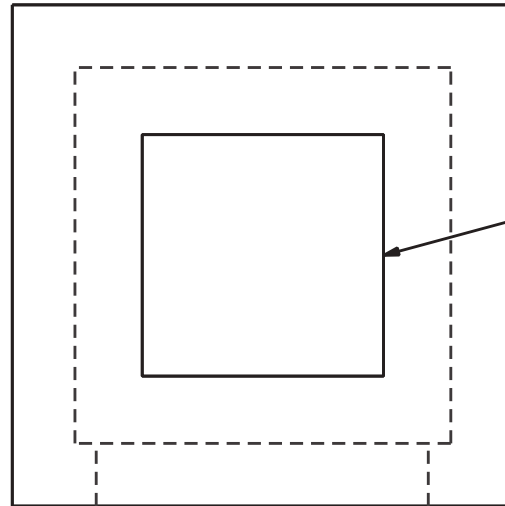
PH\* 1-800-737-0707

DWG# SRS-512

DATE: 09/12/08

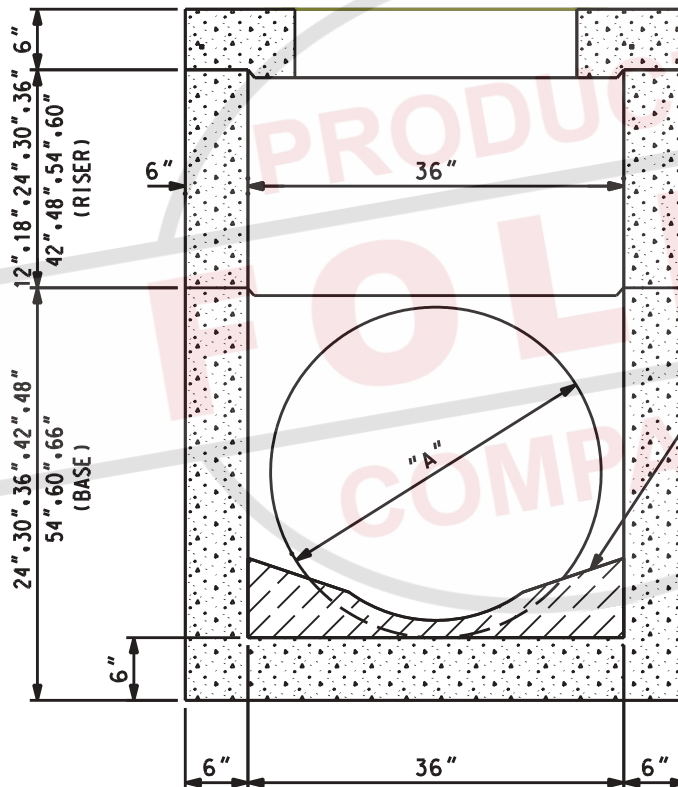
SHEET# 1 OF 1





OPENING (AS  
REQUIRED)  
IN TOP SLAB

FLAT TOP  
(WEIGHT: 1,600 lbs.)



WEIGHTS - MAX

12" RISER:	1.050 lbs
18" RISER:	1.575 lbs
24" RISER:	2.100 lbs
30" RISER:	2.625 lbs
36" RISER:	3.150 lbs
42" RISER:	3.675 lbs
48" RISER:	4.200 lbs
54" RISER:	4.725 lbs
60" RISER:	5.250 lbs
24" BASE:	2.767 lbs
30" BASE:	3.292 lbs
36" BASE:	3.817 lbs
42" BASE:	4.342 lbs
48" BASE:	4.867 lbs
54" BASE:	5.392 lbs
60" BASE:	5.917 lbs
66" BASE:	6.442 lbs

GENERAL NOTES:

1. ALL MATERIAL, DESIGN, MANUFACTURE, PHYSICAL TEST REQUIREMENTS, FINISH MARKING, INSPECTION, REJECTION AND REPAIRS TO MEET "STANDARD SPECIFICATIONS FOR PRECAST CONCRETE WATER AND WASTEWATER STRUCTURES", PER ASTM C-913 (LATEST REVISION).

DIMENSION "A"  
AS REQUIRED



HERMITAGE, TN LENOIR CITY, TN  
FRANKLIN, TN CHATANOOGA, TN

36" x 36" CATCH BASIN (6" WALL)

SCALE: NTS

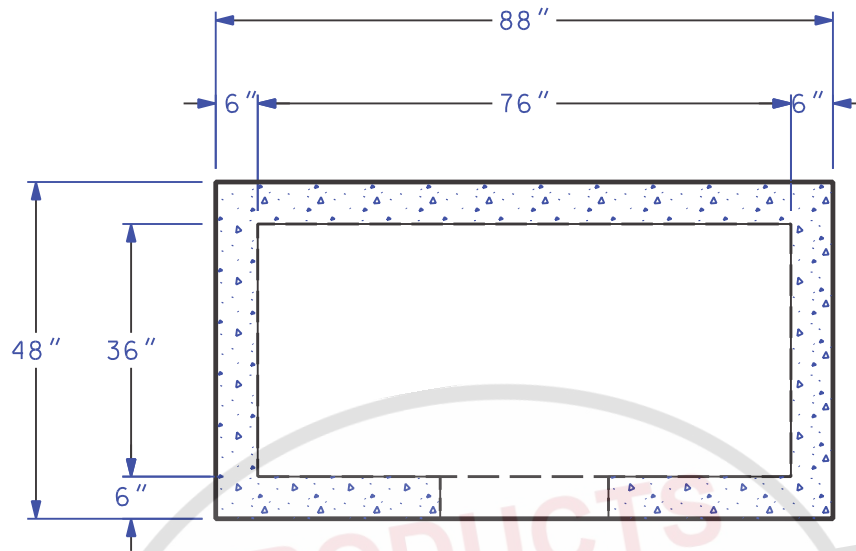
PH# 1-800-737-0707

DWG# SRS-513

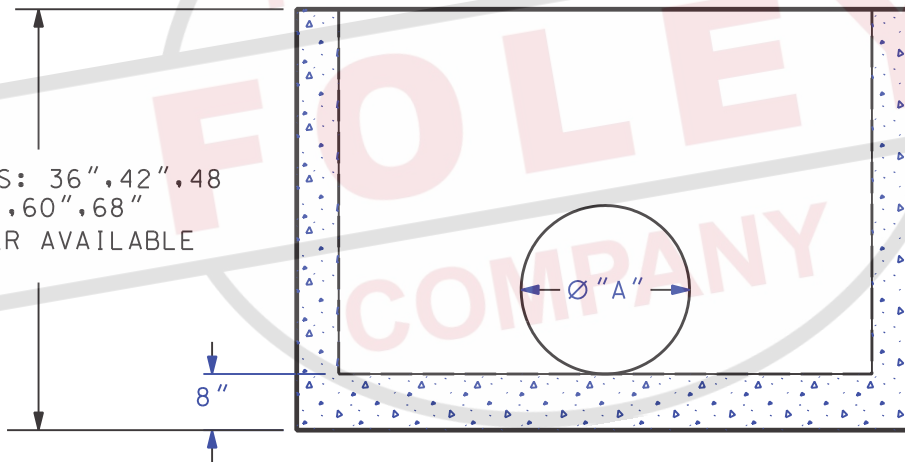
DATE: 09/12/08

SHEET# 1 OF 1





BASE HT'S: 36", 42", 48", 54", 60", 68"  
NO RISER AVAILABLE



#### WEIGHTS - MAX

36" BASE	= 6.559 LBS
42" BASE	= 7.334 LBS
48" BASE	= 8.110 LBS
54" BASE	= 8.884 LBS
60" BASE	= 9.660 LBS
68" BASE	= 10.692 LBS

#### GENERAL NOTES:

1. ALL MATERIAL, DESIGN, MANUFACTURE, PHYSICAL TEST REQUIREMENTS, FINISH MARKING, INSPECTION, REJECTION AND REPAIRS TO MEET "STANDARD SPECIFICATIONS FOR PRECAST CONCRETE WATER AND WASTEWATER STRUCTURES", PER ASTM C-913 (LATEST REVISION).



HERMITAGE, TN LENOIR CITY, TN  
FRANKLIN, TN CHATANOOGA, TN

36" x 76" CATCH BASIN

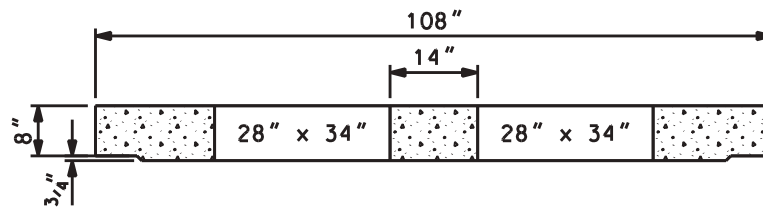
SCALE: NTS

PH# 1-800-737-0707

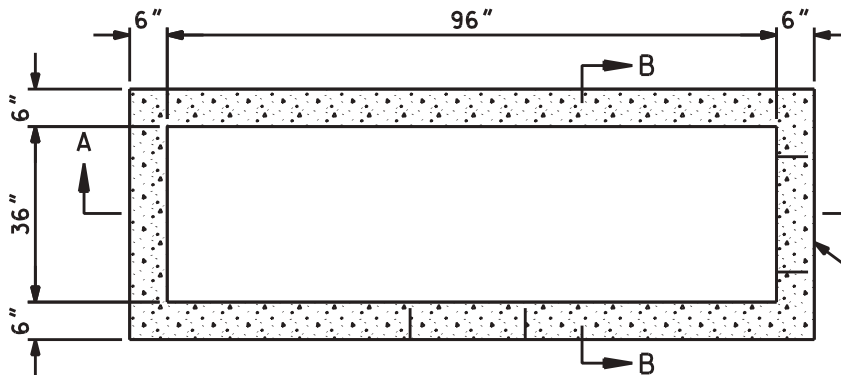
DWG# SRS-514-1

DATE: 1/23/12

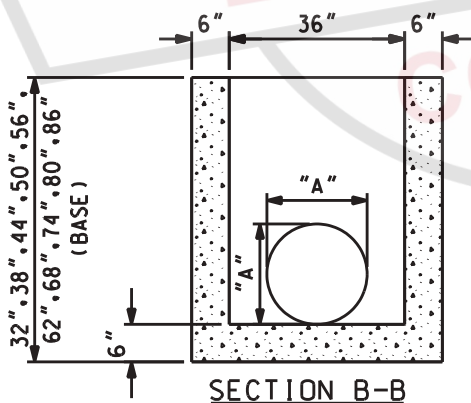
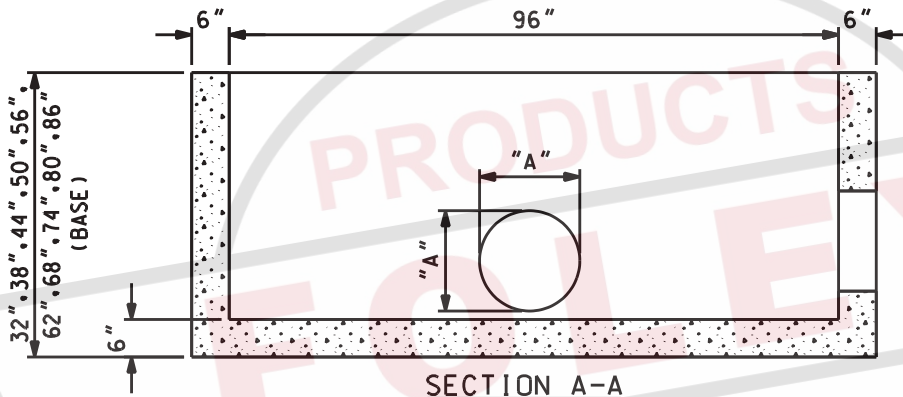
SHEET# 1 OF 1



**FLAT TOP**  
(WEIGHT: 2,600 lbs.)



MAXIMUM PIPE DIA.:  
24" CONCRETE  
30" CMP



**WEIGHTS - MAX.**

24" RISER: 3,600 lbs.  
36" RISER: 5,400 lbs.  
48" RISER: 7,200 lbs.  
60" RISER: 9,000 lbs.

32" BASE: 6,600 lbs.  
38" BASE: 7,500 lbs.  
44" BASE: 8,400 lbs.  
50" BASE: 9,300 lbs.  
56" BASE: 10,200 lbs.  
62" BASE: 11,100 lbs.  
68" BASE: 12,000 lbs.  
74" BASE: 12,900 lbs.  
80" BASE: 13,800 lbs.  
86" BASE: 14,700 lbs.

**GENERAL NOTES:**

1. ALL MATERIAL, DESIGN, MANUFACTURE, PHYSICAL TEST REQUIREMENTS, FINISH MARKING, INSPECTION, REJECTION AND REPAIRS TO MEET "SPECIFICATIONS FOR PRECAST-REINFORCED CONCRETE MANHOLE SECTIONS", PER ASTM C-913 (LATEST REVISION).

\* CAN BE UTILIZED AS TDOT STANDARD: D-CB-14P, 14S, 26S 26P, 28P, 29S, 29P



HERMITAGE, TN LENOIR CITY, TN  
FRANKLIN, TN CHATANOOGA, TN

36"x 96" CATCH BASIN

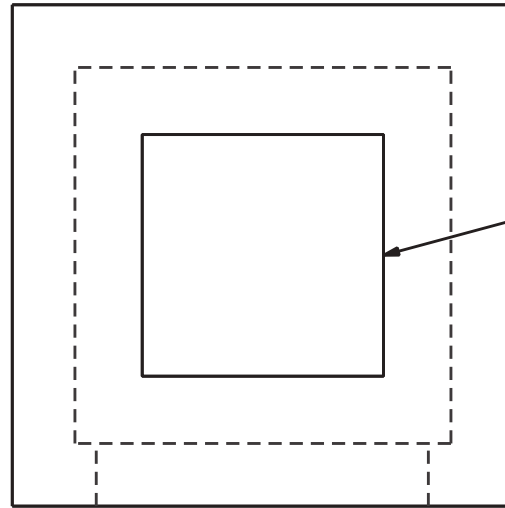
SCALE: NTS

PH\* 1-800-737-0707

DWG# SRS-515

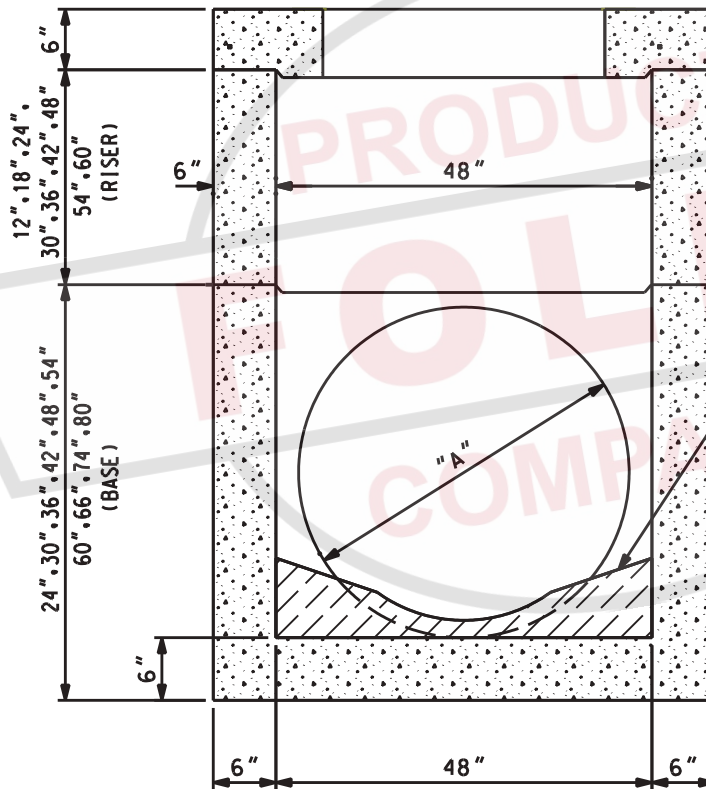
DATE: 09/12/08

SHEET# 1 OF 1



OPENING (AS  
REQUIRED)  
IN TOP SLAB

FLAT TOP  
(WEIGHT: 1.875 lbs.)



WEIGHTS - MAX.

12"	RISER: 1.350 lbs.
18"	RISER: 2.025 lbs.
24"	RISER: 2.700 lbs.
30"	RISER: 3.375 lbs.
36"	RISER: 4.050 lbs.
42"	RISER: 4.725 lbs.
48"	RISER: 5.400 lbs.
54"	RISER: 6.075 lbs.
60"	RISER: 6.750 lbs.

24"	BASE: 3.900 lbs.
30"	BASE: 4.575 lbs.
36"	BASE: 5.250 lbs.
42"	BASE: 5.925 lbs.
48"	BASE: 6.600 lbs.
54"	BASE: 7.275 lbs.
60"	BASE: 7.950 lbs.
66"	BASE: 8.625 lbs.

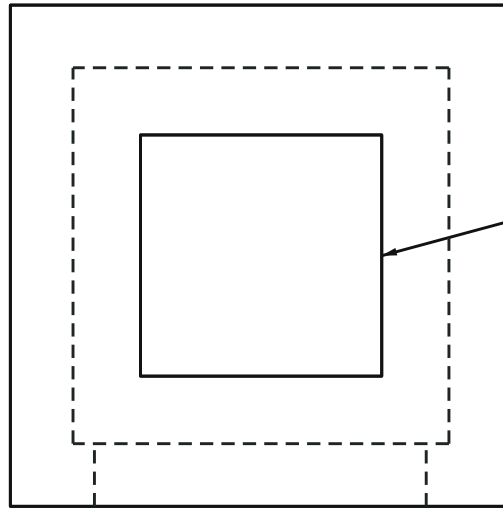
GENERAL NOTES:

1. ALL MATERIAL, DESIGN, MANUFACTURE, PHYSICAL TEST REQUIREMENTS, FINISH MARKING, INSPECTION, REJECTION AND REPAIRS TO MEET "STANDARD SPECIFICATIONS FOR PRECAST CONCRETE WATER AND WASTEWATER STRUCTURES", PER ASTM C-913 (LATEST REVISION).

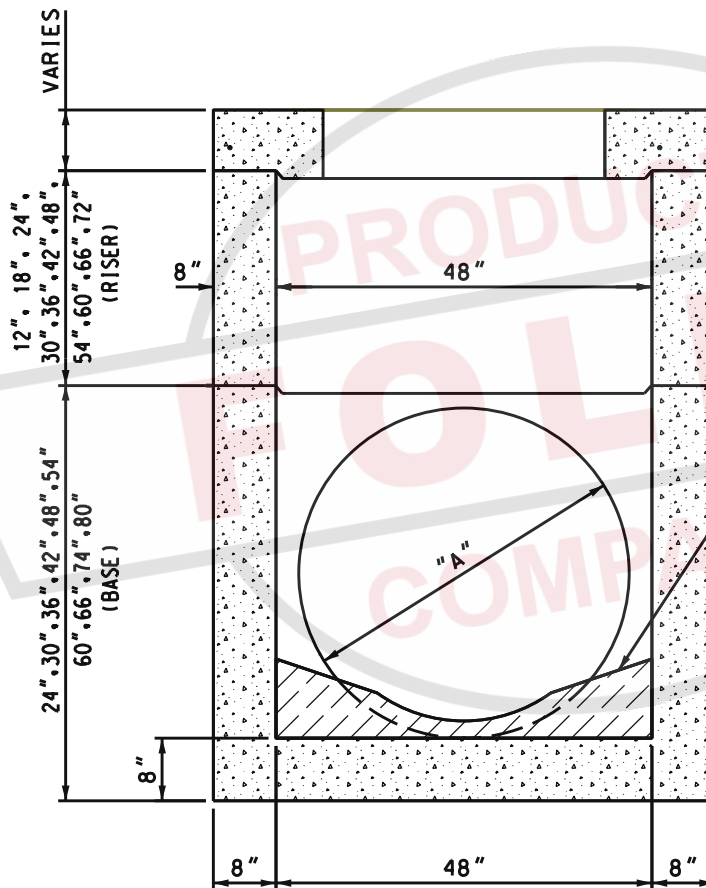
DIMENSION "A"  
AS REQUIRED



HERMITAGE, TN LENOIR CITY, TN  
FRANKLIN, TN CHATANOOGA, TN



OPENING (AS  
REQUIRED)  
IN TOP SLAB



#### WEIGHTS - MAX.

12"	RISER: 1,861 lbs.
18"	RISER: 2,792 lbs.
24"	RISER: 3,722 lbs.
30"	RISER: 4,653 lbs.
36"	RISER: 5,583 lbs.
42"	RISER: 6,514 lbs.
48"	RISER: 7,444 lbs.
54"	RISER: 8,375 lbs.
60"	RISER: 9,305 lbs.
66"	RISER: 10,236 lbs.
72"	RISER: 11,166 lbs.

24"	BASE: 5,330 lbs.
30"	BASE: 6,260 lbs.
36"	BASE: 7,190 lbs.
42"	BASE: 8,120 lbs.
48"	BASE: 9,050 lbs.
54"	BASE: 9,980 lbs.
60"	BASE: 10,910 lbs.
66"	BASE: 11,840 lbs.
74"	BASE: 13,050 lbs.
80"	BASE: 13,980 lbs.

#### GENERAL NOTES:

1. ALL MATERIAL, DESIGN, MANUFACTURE, PHYSICAL TEST REQUIREMENTS, FINISH MARKING, INSPECTION, REJECTION AND REPAIRS TO MEET "STANDARD SPECIFICATIONS FOR PRECAST CONCRETE WATER AND WASTEWATER STRUCTURES", PER ASTM C-913 (LATEST REVISION).

DIMENSION "A"  
AS REQUIRED

\* CAN BE UTILIZED AS TDOT STANDARD: 10SB, 12SB, 25SB, 38SB, 39S, 41SB, 42SB, D-JBS-2, D-SDS-2A, 2B



HERMITAGE, TN LENOIR CITY, TN  
FRANKLIN, TN CHATANOOGA, TN

48" x 48" CATCH BASIN - 8" WALL

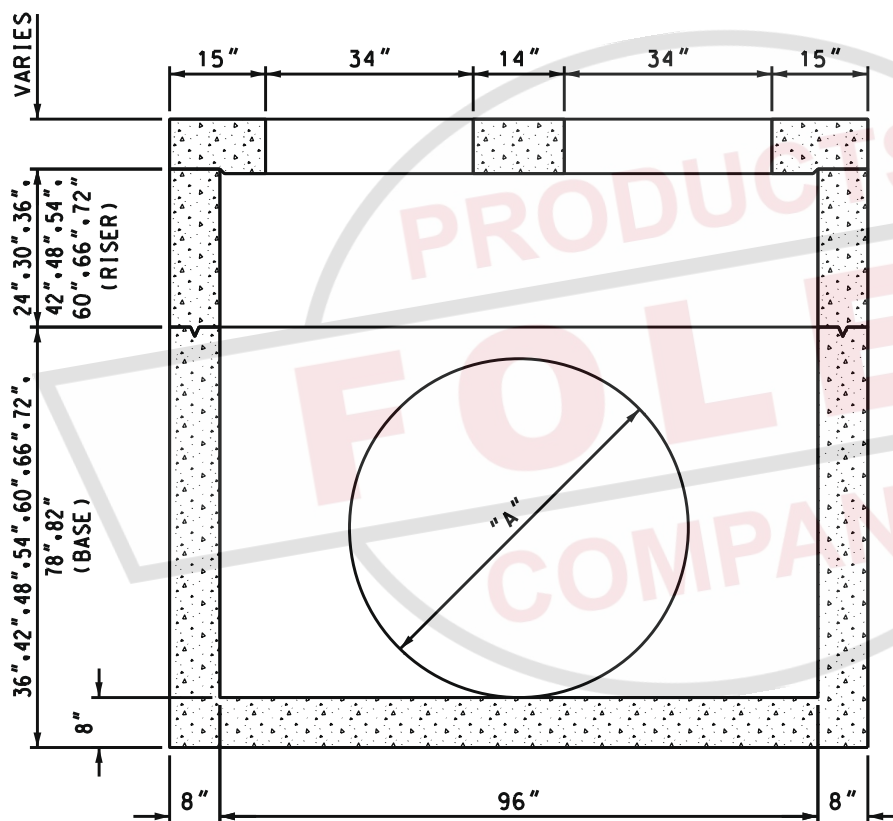
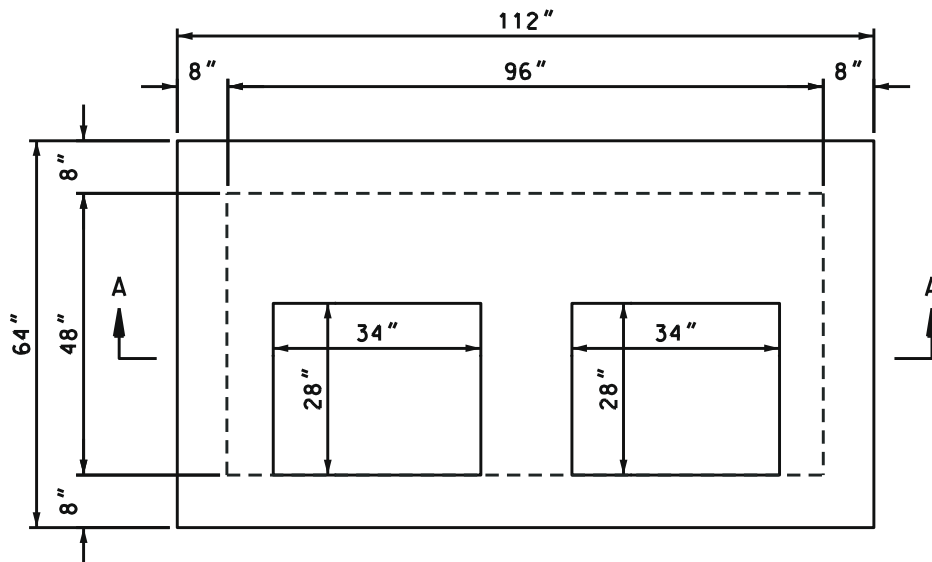
SCALE: NTS

PH• 1-800-737-0707

DWG# SRS-517

DATE: 09/12/08

SHEET# 1 OF 1



SECTION A-A

WEIGHTS - MAX.

24" RISER:	5.318 lbs.
30" RISER:	6.648 lbs.
36" RISER:	7.977 lbs.
42" RISER:	9.307 lbs.
48" RISER:	10.636 lbs.
54" RISER:	11.966 lbs.
60" RISER:	13.295 lbs.
66" RISER:	14.630 lbs.
72" RISER:	15.960 lbs.

36" BASE:	11.200 lbs.
42" BASE:	12.532 lbs.
48" BASE:	13.861 lbs.
54" BASE:	15.191 lbs.
60" BASE:	16.520 lbs.
66" BASE:	17.850 lbs.
72" BASE:	19.179 lbs.
78" BASE:	20.509 lbs.
82" BASE:	21.395 lbs.

GENERAL NOTES:

1. ALL MATERIAL, DESIGN, MANUFACTURE, PHYSICAL TEST REQUIREMENTS, FINISH MARKING, INSPECTION, REJECTION AND REPAIRS TO MEET "STANDARD SPECIFICATIONS FOR PRECAST CONCRETE WATER AND WASTEWATER STRUCTURES", PER ASTM C-913 (LATEST REVISION).

DIMENSION "A"  
AS REQUIRED

\* CAN BE UTILIZED AS TDOT STANDARD: D-CB-16S, 27S, 40S, 43SB, 45S



HERMITAGE, TN LENOIR CITY, TN  
FRANKLIN, TN CHATANOOGA, TN

48"x 96" CATCH BASIN

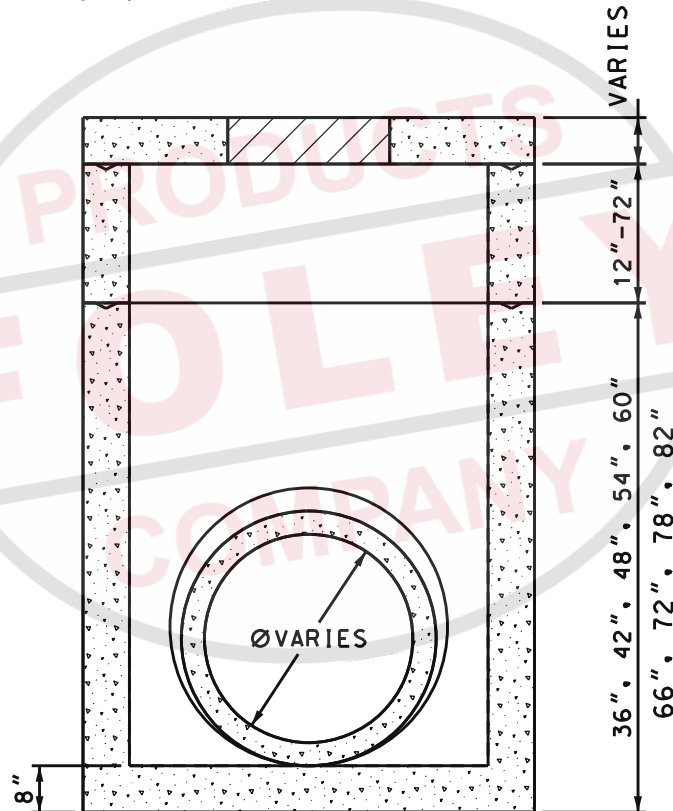
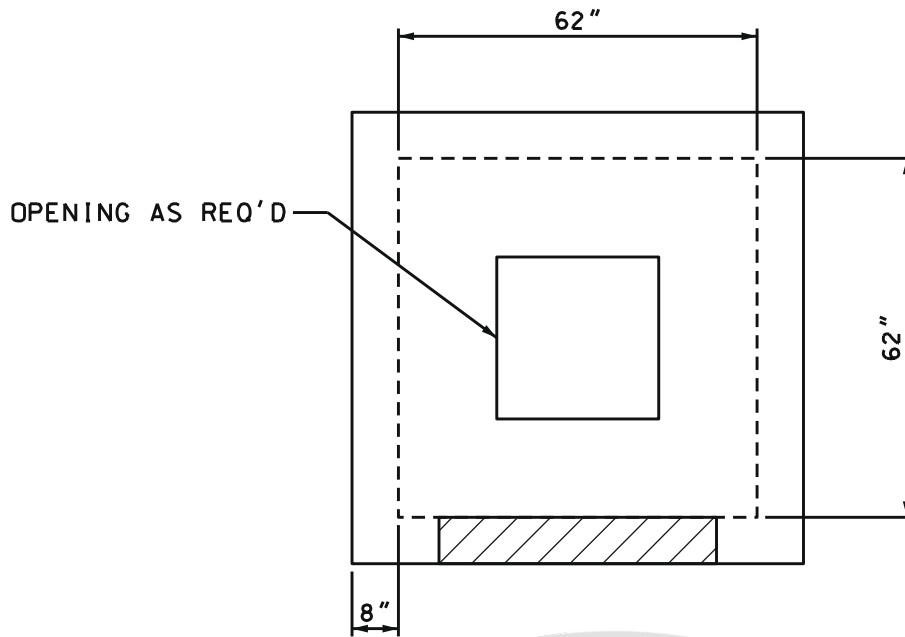
SCALE: NTS

PH• 1-800-737-0707

DWG# SRS-518

DATE: 09/12/08

SHEET# 1 OF 1



### GENERAL NOTES:

1. ALL MATERIAL, DESIGN, MANUFACTURE, PHYSICAL TEST REQUIREMENTS, FINISH MARKING, INSPECTION, REJECTION AND REPAIRS TO MEET "SPECIFICATIONS FOR PRECAST-REINFORCED CONCRETE MANHOLE SECTIONS", PER ASTM C-478 (LATEST REVISION).

### BASE WEIGHTS

36"	- 9.692 lbs.
42"	- 10.859 lbs.
48"	- 12.026 lbs.
54"	- 13.193 lbs.
60"	- 14.360 lbs.
66"	- 15.527 lbs.
72"	- 16.694 lbs.
78"	- 17.861 lbs.
82"	- 18.639 lbs.

\* CAN BE UTILIZED AS TDOT STANDARD: D-CB-12SC, 25SC  
38SC, 39SC, 41SC, 42SC, 51SC, D-JBS-3, D-MH-5, D-SDS-3A



HERMITAGE, TN LENOIR CITY, TN  
FRANKLIN, TN CHATANOOGA, TN

62" X 62" CATCH BASIN

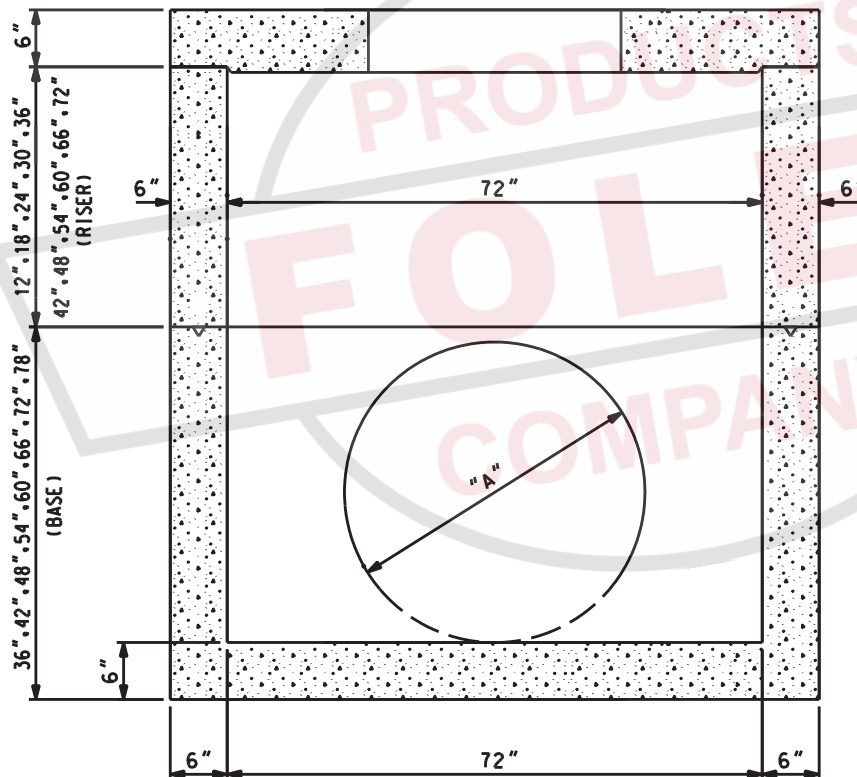
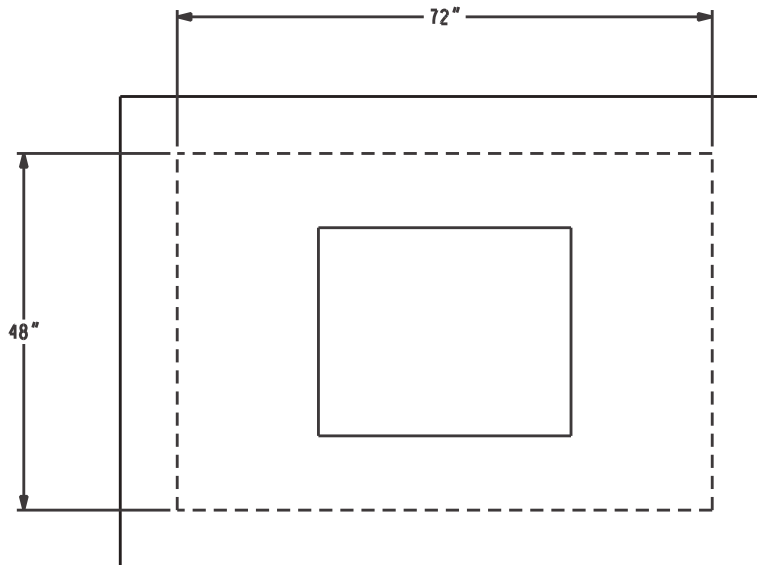
SCALE: NTS

PH# 1-800-737-0707

DWG# SRS-520

DATE: 01/22/12

SHEET# 1 OF 1



WEIGHTS - MAX.	
12" RISER:	1.650 lbs.
18" RISER:	2.475 lbs.
24" RISER:	3.300 lbs.
30" RISER:	4.125 lbs.
36" RISER:	4.950 lbs.
42" RISER:	5.775 lbs.
48" RISER:	6.600 lbs.
54" RISER:	7.425 lbs.
60" RISER:	8.250 lbs.
66" RISER:	9.075 lbs.
72" RISER:	9.900 lbs.

36" BASE:	6.750 lbs.
42" BASE:	7.575 lbs.
48" BASE:	8.400 lbs.
54" BASE:	9.225 lbs.
60" BASE:	10.050 lbs.
66" BASE:	10.875 lbs.
72" BASE:	11.700 lbs.
78" BASE:	12.525 lbs.

DIMENSION "A"  
AS REQUIRED

#### GENERAL NOTES:

1. ALL MATERIAL, DESIGN, MANUFACTURE, PHYSICAL TEST REQUIREMENTS, FINISH MARKING, INSPECTION, REJECTION AND REPAIRS TO MEET "STANDARD SPECIFICATIONS FOR PRECAST CONCRETE WATER AND WASTEWATER STRUCTURES", PER ASTM C-913 (LATEST REVISION).



HERMITAGE, TN LENOIR CITY, TN  
FRANKLIN, TN CHATANOOGA, TN

48" X 72" CATCH BASIN

SCALE: NTS

PH# 1-800-737-0707

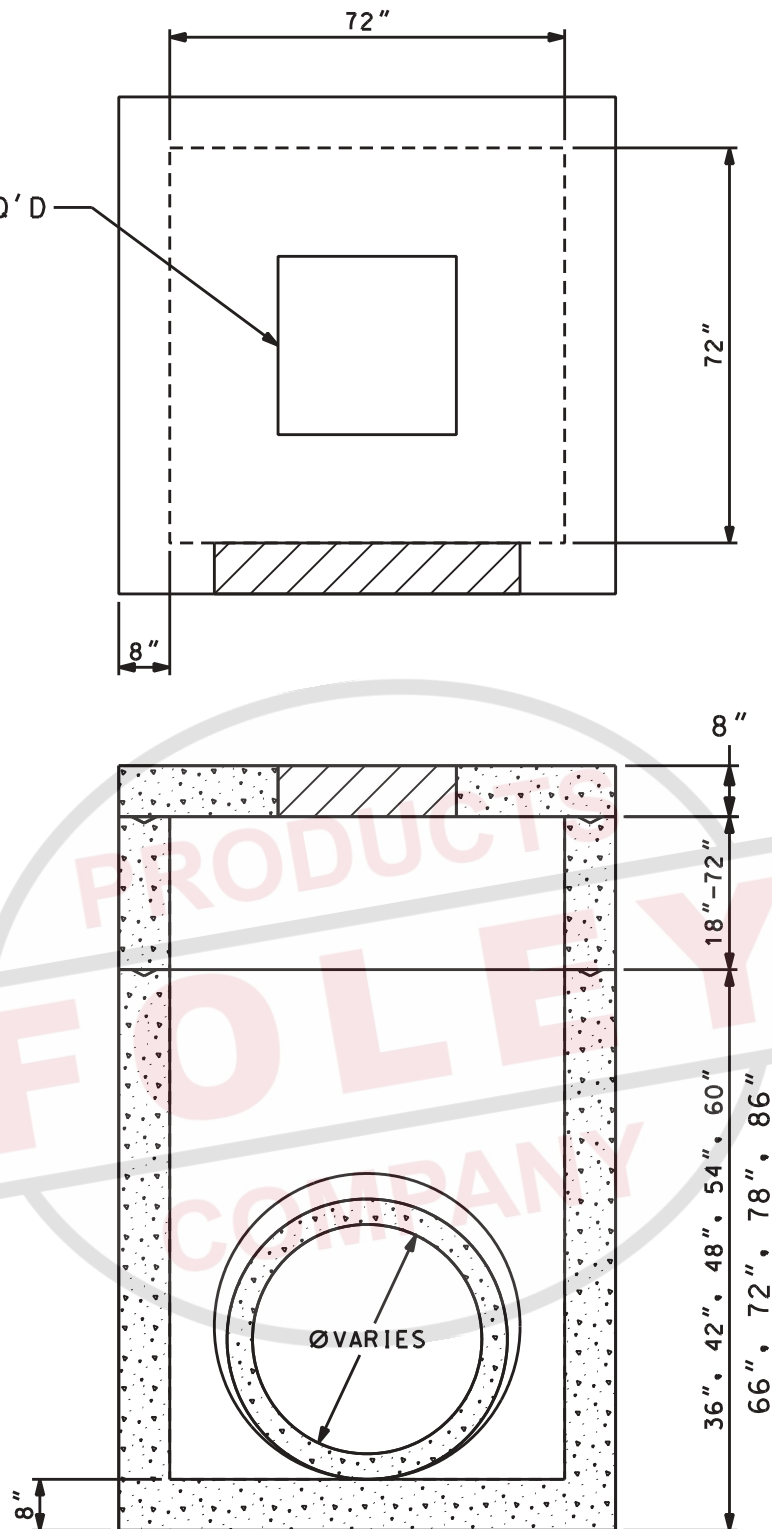
DWG# SRS-521

DATE: 01/22/12

SHEET# 1 OF 1



OPENING AS REQ'D



#### BASE WEIGHTS

36"	-	14,290 lbs.
42"	-	15,623 lbs.
48"	-	16,956 lbs.
54"	-	18,289 lbs.
60"	-	19,622 lbs.
66"	-	20,955 lbs.
72"	-	22,288 lbs.
78"	-	23,621 lbs.
86"	-	24,954 lbs.

#### GENERAL NOTES:

1. ALL MATERIAL, DESIGN, MANUFACTURE, PHYSICAL TEST REQUIREMENTS, FINISH MARKING, INSPECTION, REJECTION AND REPAIRS TO MEET "SPECIFICATIONS FOR PRECAST-REINFORCED CONCRETE MANHOLE SECTIONS", PER ASTM C-913 (LATEST REVISION).



HERMITAGE, TN LENOIR CITY, TN  
FRANKLIN, TN CHATANOOGA, TN

72" X 72" CATCH BASIN

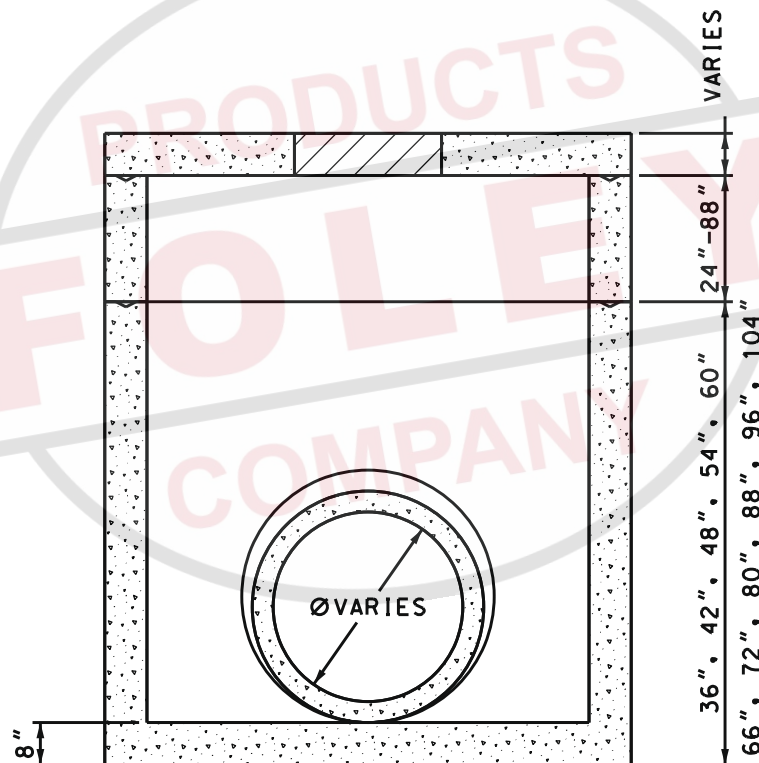
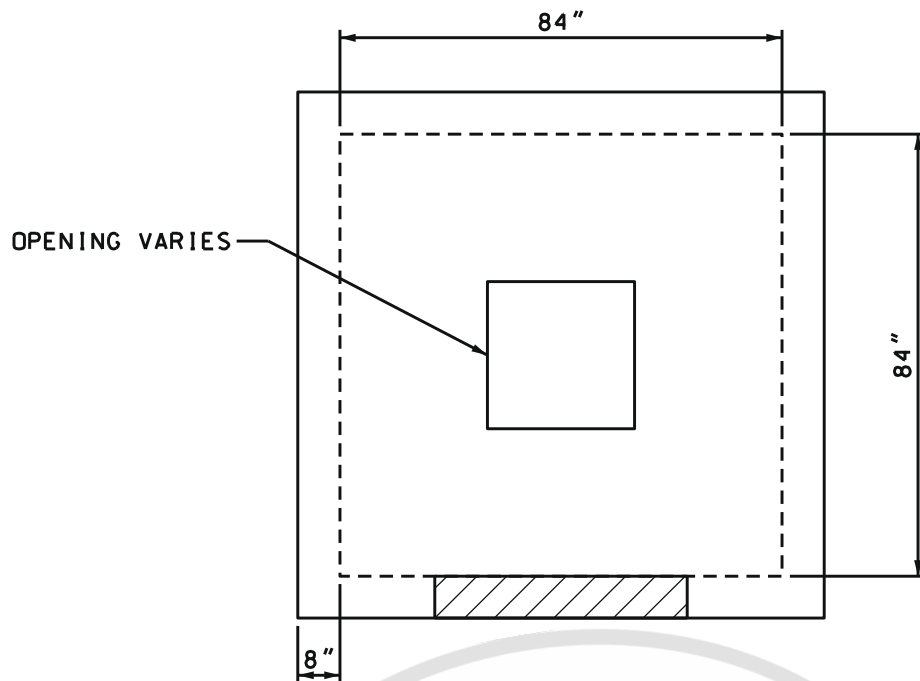
SCALE: NTS

PH\* 1-800-737-0707

DWG# SRS-522

DATE: 01/22/12

SHEET# 1 OF 1



#### BASE WEIGHTS

36"	-	14,114	lbs.
42"	-	15,643	lbs.
48"	-	17,172	lbs.
54"	-	18,701	lbs.
60"	-	20,230	lbs.
66"	-	21,759	lbs.
72"	-	23,288	lbs.
80"	-	24,817	lbs.
88"	-	26,346	lbs.
96"	-	27,875	lbs.
104"	-	29,914	lbs.

#### GENERAL NOTES:

1. ALL MATERIAL, DESIGN, MANUFACTURE, PHYSICAL TEST REQUIREMENTS, FINISH MARKING, INSPECTION, REJECTION AND REPAIRS TO MEET "SPECIFICATIONS FOR PRECAST-REINFORCED CONCRETE MANHOLE SECTIONS", PER ASTM C-913 (LATEST REVISION).

\* CAN BE UTILIZED AS TDOT STANDARD: D-CB-12SD, 25SD, 31SD 31P, 39SD, 41SD, 42SD, 51SD, D-MH-6, D-SDS-4



HERMITAGE, TN LENOIR CITY, TN  
FRANKLIN, TN CHATANOOGA, TN

84" X 84" CATCH BASIN

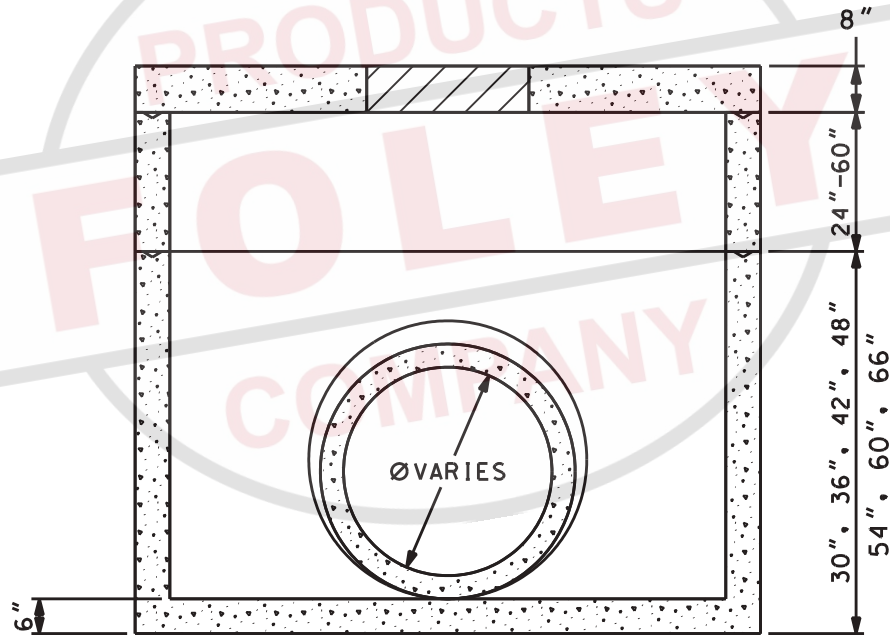
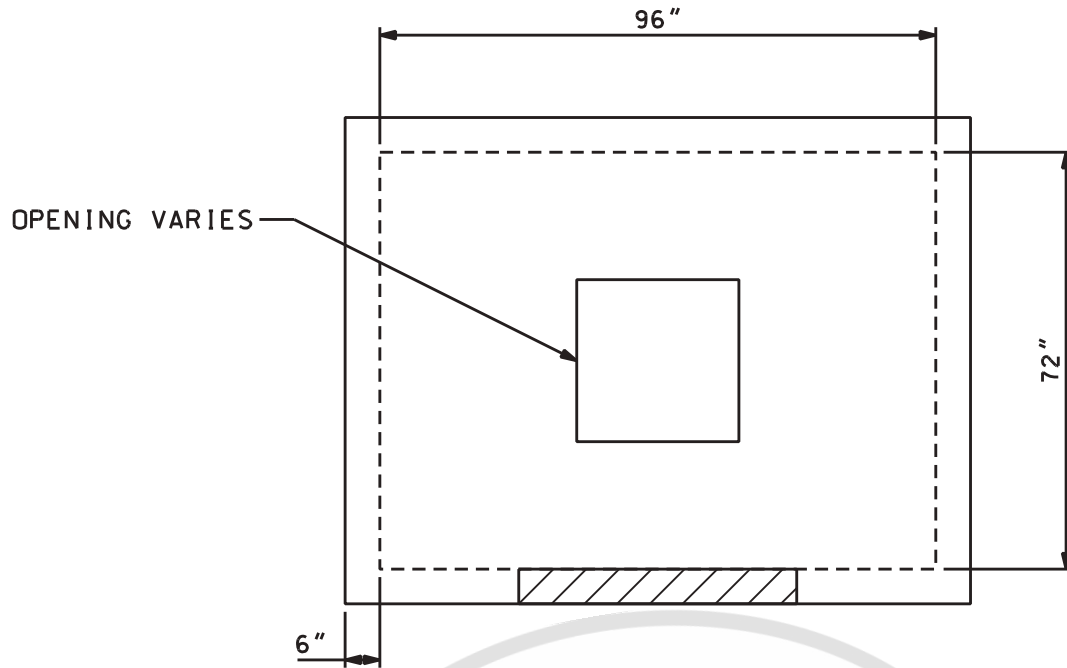
SCALE: NTS

PH• 1-800-737-0707

DWG# SRS-524

DATE: 09/12/08

SHEET# 1 OF 1



#### BASE WEIGHTS

30"	- 9.225 lbs.
36"	- 10.350 lbs.
42"	- 11.475 lbs.
48"	- 12.600 lbs.
54"	- 13.725 lbs.
60"	- 14.850 lbs.
66"	- 15.975 lbs.

#### GENERAL NOTES:

1. ALL MATERIAL, DESIGN, MANUFACTURE, PHYSICAL TEST REQUIREMENTS, FINISH MARKING, INSPECTION, REJECTION AND REPAIRS TO MEET "SPECIFICATIONS FOR PRECAST-REINFORCED CONCRETE MANHOLE SECTIONS", PER ASTM C-913 (LATEST REVISION).



HERMITAGE, TN LENOIR CITY, TN  
FRANKLIN, TN CHATANOOGA, TN

72" X 96" CATCH BASIN

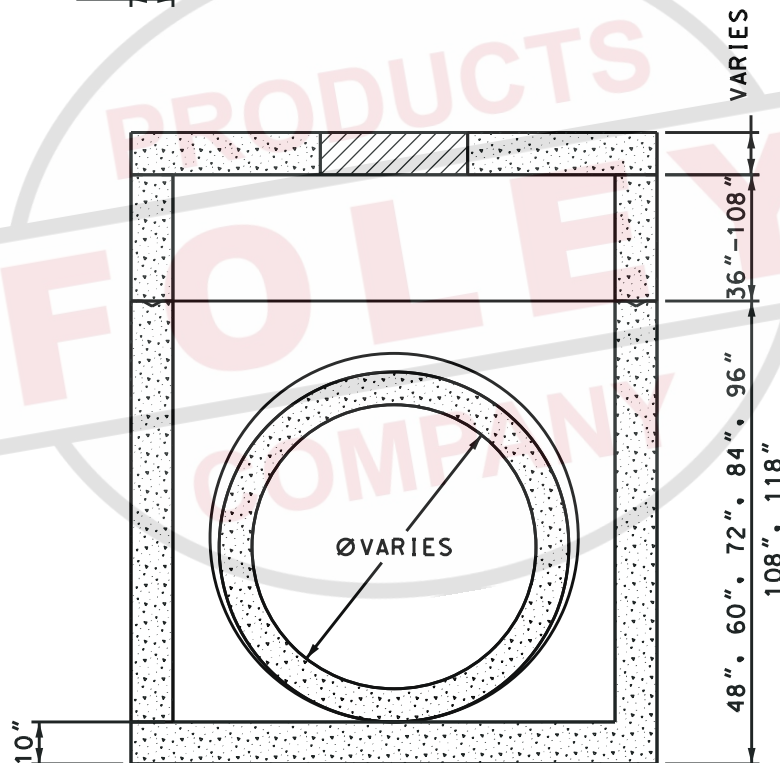
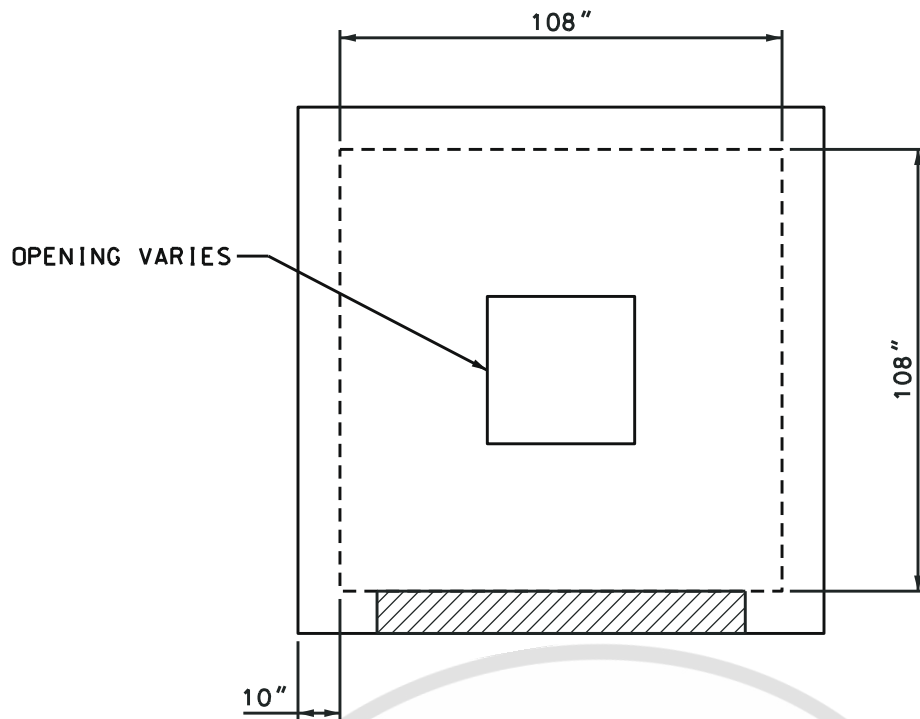
SCALE: NTS

PH\* 1-800-737-0707

DWG# SRS-525

DATE: 01/22/12

SHEET# 1 OF 1



#### RISER WEIGHTS

36"	-	14,748	lbs.
48"	-	19,676	lbs.
60"	-	24,604	lbs.
72"	-	29,532	lbs.
84"	-	34,460	lbs.
96"	-	39,388	lbs.
108"	-	44,316	lbs.

#### BASE WEIGHTS

48"	-	29,789	lbs.
60"	-	34,705	lbs.
72"	-	39,621	lbs.
84"	-	44,537	lbs.
96"	-	49,453	lbs.
108"	-	54,369	lbs.
118"	-	58,466	lbs.

#### GENERAL NOTES:

1. ALL MATERIAL, DESIGN, MANUFACTURE, PHYSICAL TEST REQUIREMENTS, FINISH MARKING, INSPECTION, REJECTION AND REPAIRS TO MEET "SPECIFICATIONS FOR PRECAST-REINFORCED CONCRETE MANHOLE SECTIONS", PER ASTM C-913 (LATEST REVISION).

\* CAN BE UTILIZED AS TDOT STANDARD: D-CB-12SE, 14SE, 25SE, 31SE, 39SE, 41SE, 44SE, 46SE, D-JBS-5, D-MH-7



HERMITAGE, TN LENOIR CITY, TN  
FRANKLIN, TN CHATANOOGA, TN

108" X 108" CATCH BASIN

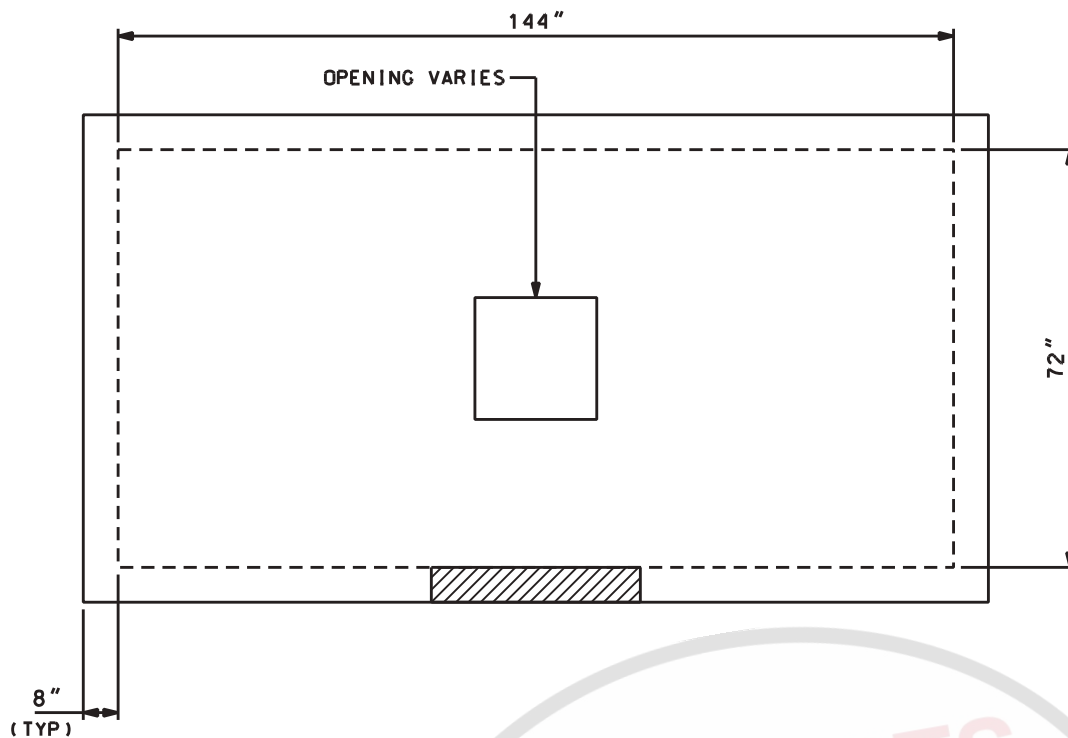
SCALE: NTS

PH• 1-800-737-0707

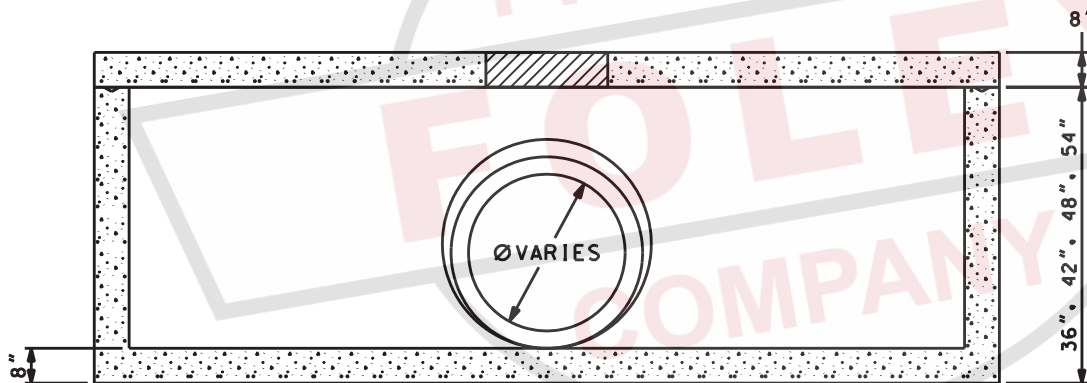
DWG# SRS-527

DATE: 09/12/08

SHEET# 1 OF 1



**FLAT TOP**  
(WEIGHT: 9,840 lbs.)



**WEIGHTS - MAX**

36" TOP RISER: 18,880 lbs.  
42" TOP RISER: 20,820 lbs.  
48" TOP RISER: 22,760 lbs.  
54" TOP RISER: 24,713 lbs.  
60" TOP RISER: 26,653 lbs.  
68" TOP RISER: 29,240 lbs.

36" RISER: 11,460 lbs.  
42" RISER: 13,580 lbs.  
48" RISER: 15,520 lbs.  
54" RISER: 17,460 lbs.  
60" RISER: 19,400 lbs.

36" BASE: 18,880 lbs  
42" BASE: 20,820 lbs.  
48" BASE: 22,760 lbs.  
54" BASE: 24,713 lbs.  
60" BASE: 26,653 lbs.  
68" BASE: 29,240 lbs.

**GENERAL NOTES:**

1. ALL MATERIAL, DESIGN, MANUFACTURE, PHYSICAL TEST REQUIREMENTS, FINISH MARKING, INSPECTION, REJECTION AND REPAIRS TO MEET "SPECIFICATIONS FOR PRECAST-REINFORCED CONCRETE MANHOLE SECTIONS", PER ASTM C-913 (LATEST REVISION).



HERMITAGE, TN LENOIR CITY, TN  
FRANKLIN, TN CHATANOOGA, TN

72" X 144" CATCH BASIN

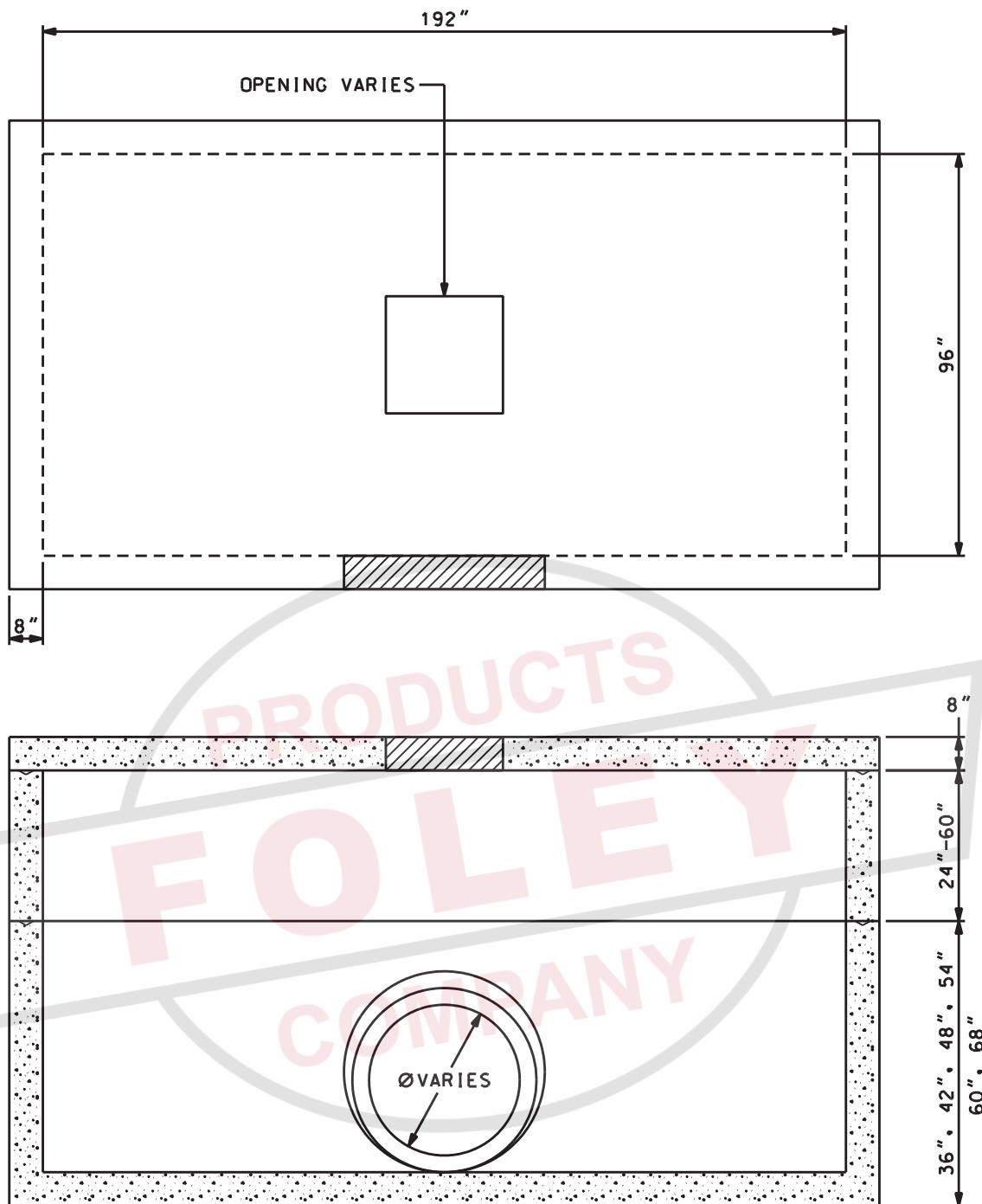
SCALE: NTS

PH# 1-800-737-0707

DWG# SRS-528

DATE: 08/29/08

SHEET# 1 OF 1



#### GENERAL NOTES:

1. ALL MATERIAL, DESIGN, MANUFACTURE, PHYSICAL TEST REQUIREMENTS, FINISH MARKING, INSPECTION, REJECTION AND REPAIRS TO MEET "SPECIFICATIONS FOR PRECAST-REINFORCED CONCRETE MANHOLE SECTIONS", PER ASTM C-913 (LATEST REVISION).

#### BASE WEIGHTS

36"	- 28.310 lbs.
42"	- 30.845 lbs.
48"	- 33.378 lbs.
54"	- 35.910 lbs.
60"	- 38.445 lbs.
68"	- 41.825 lbs.



HERMITAGE, TN LENOIR CITY, TN  
FRANKLIN, TN CHATANOOGA, TN

96" X 192" CATCH BASIN

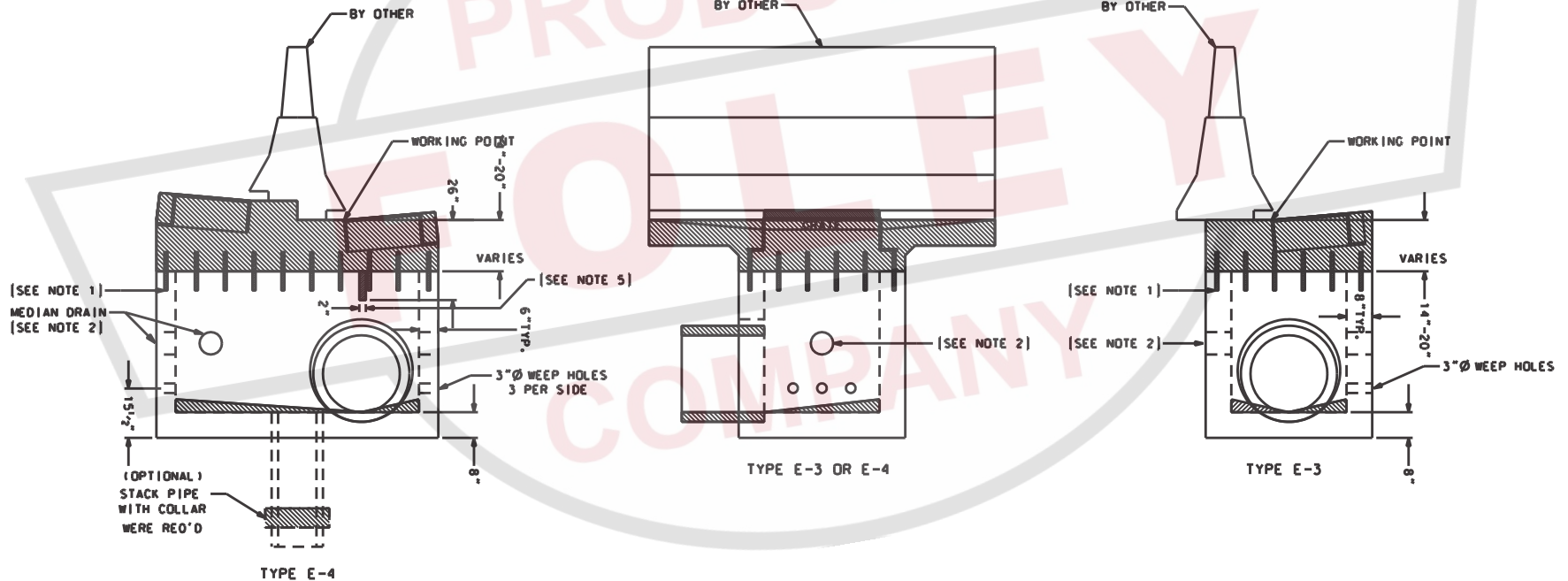
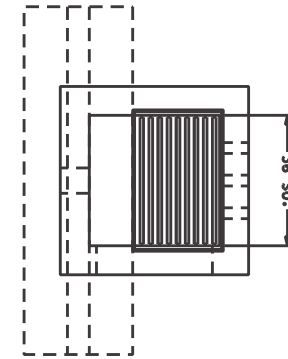
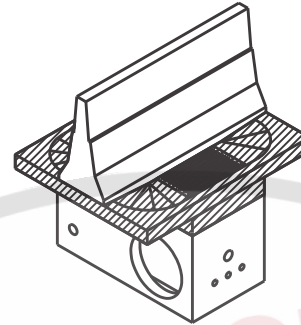
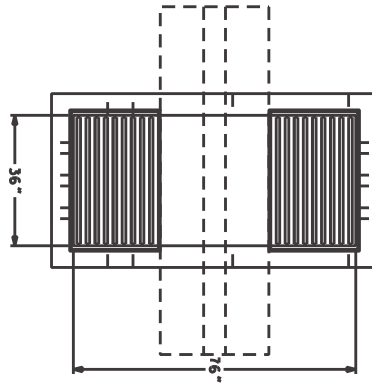
SCALE: NTS

PH# 1-800-737-0707

DWG# SRS-530

DATE: 09/12/08

SHEET# 1 OF 1




# **GENERAL NOTES:**

1. DOWELS SHALL BE #4 BARS, 12" LONG AT 9" C-C SPACING & INSTALLED BY PRECASTER USING "CONCRESSIVE 1090" TYPE II CLASS C EPOXY.
2. MEDIAN DRAIN & PAVEMENT EDGE DRAIN OPENINGS - WILL BE 7" DIAMETER OPENING FOR 6" PIPING.
3. REINFORCEMENT STEEL = 60 K.S.I. - SIZE, SPACING, & LOCATION WILL MEET AL-DOT STANDARD DETAIL [1-621-E3] INDEX NO.637
4. MIN. CONCRETE 28 DAY STRENGTH - 5,000 P.S.I.
5. 2" VERTICAL SLOT IN UPHILL SIDE OF INLET BOX, FROM SUBGRADE TO BOTTOM OF GRATE SEAT, FOR CONTINUOUS DRAINAGE OF THE MEDIAN.

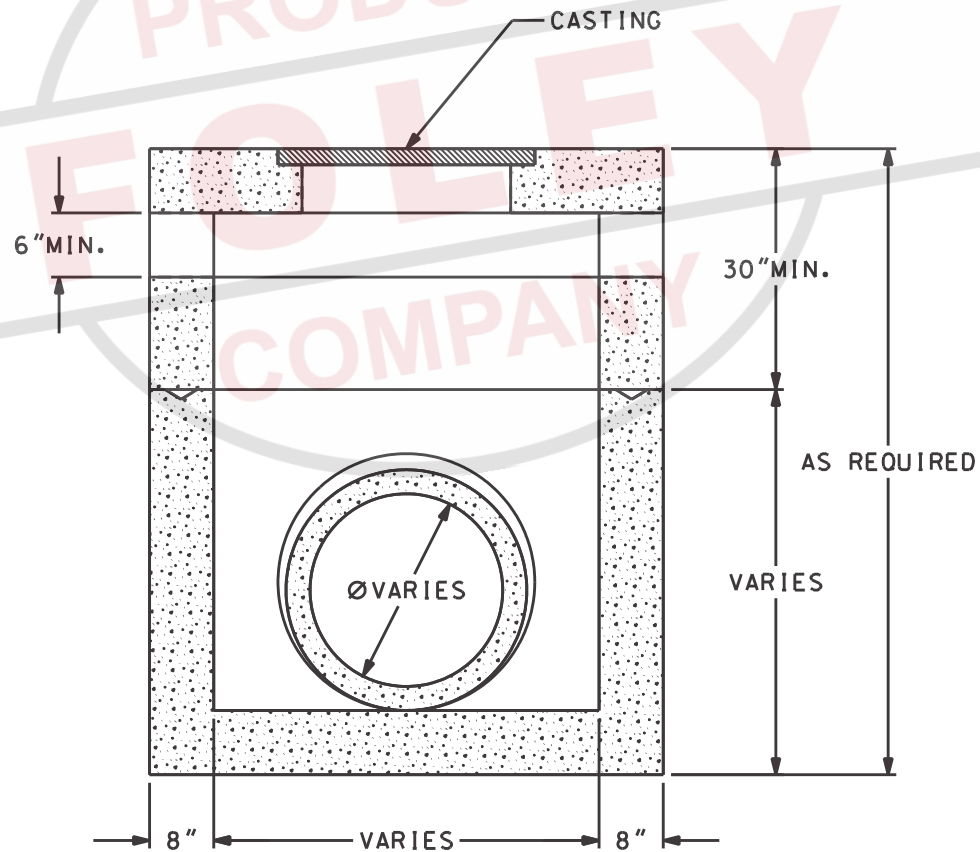
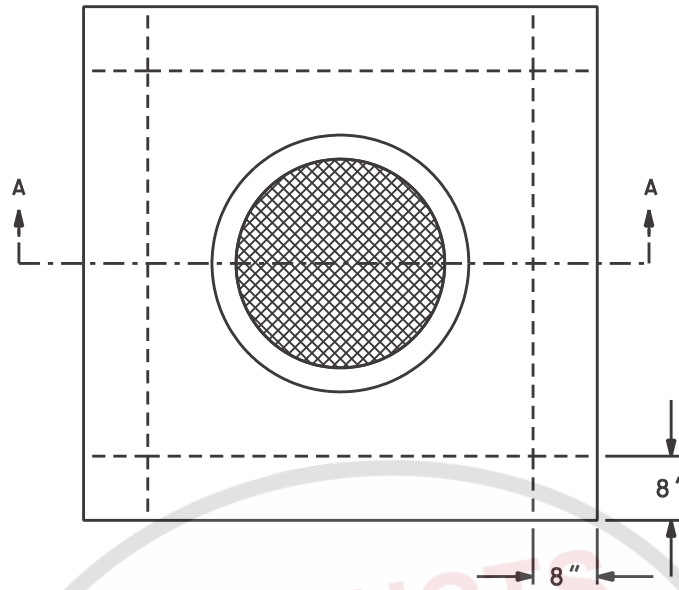
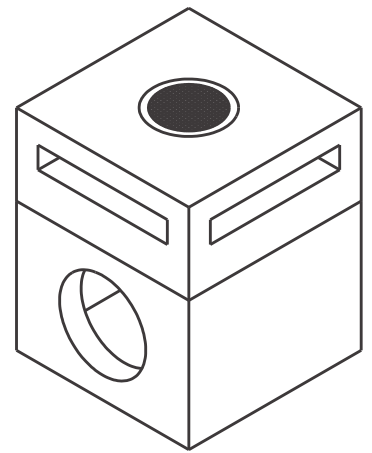
 POUR-IN-PLACE  
 PRECAST UNIT

PRECAST INLET / TYPE E (E-3 & E-4)

SCALE: NTS

	HERMITAGE, TN LENOIR CITY, TN	
	FRANKLIN, TN CHATANOOGA, TN	
PH# 1-800-737-0707	DWG# SRS-531	
DATE: 09/12/08	SHEET# 1 OF 1	





SECTION A-A



HERMITAGE, TN LENOIR CITY, TN  
FRANKLIN, TN CHATANOOGA, TN

YARD INLET ( SQUARE )

SCALE: NTS

PH\* 1-800-737-0707

DWG# SRS-534

DATE: 01/22/12

SHEET# 1 OF 1