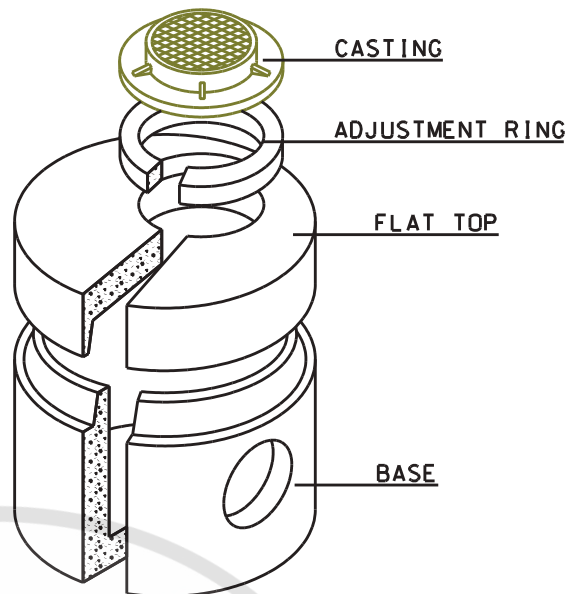
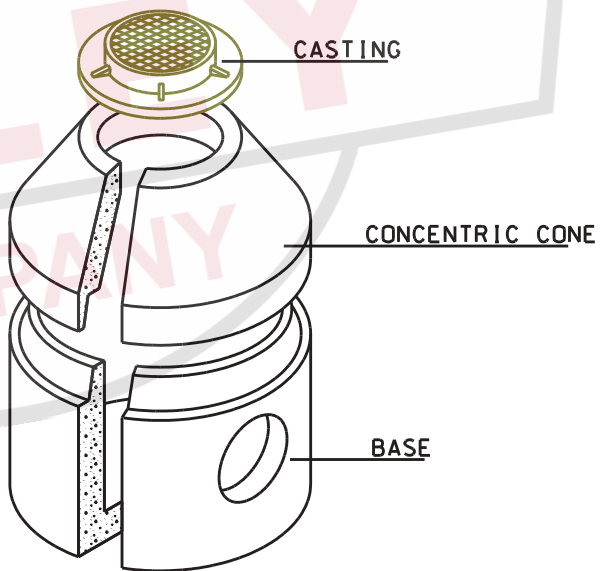


DEEP INSTALLATION

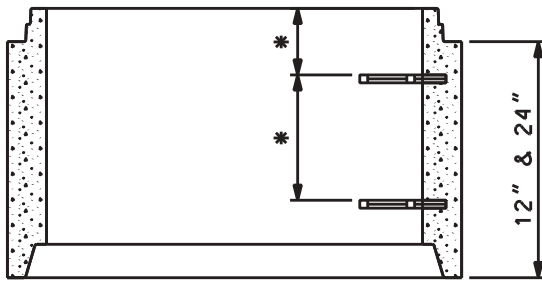


SHALLOW FLAT TOP  
INSTALLATION



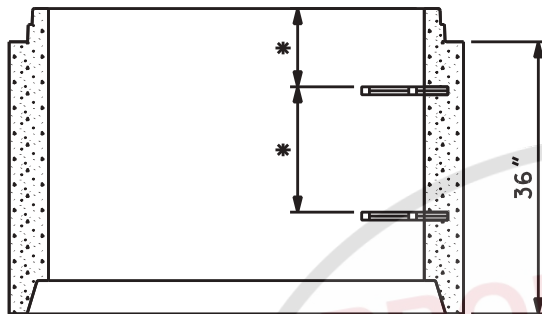
SHALLOW CONCENTRIC  
CONE INSTALLATION

\* FOR PRECAST COMPONENTS SEE  
STORM SECTION

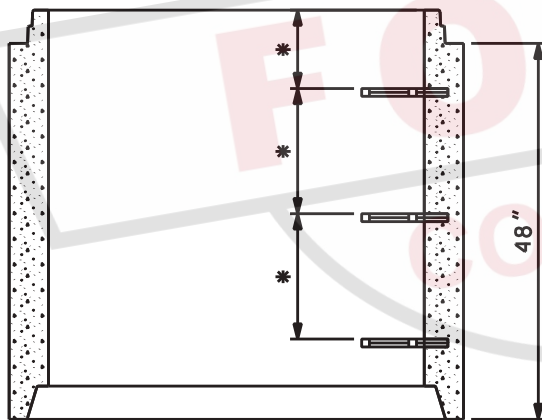


48"x12" RISER  
WEIGHT 850 lbs.

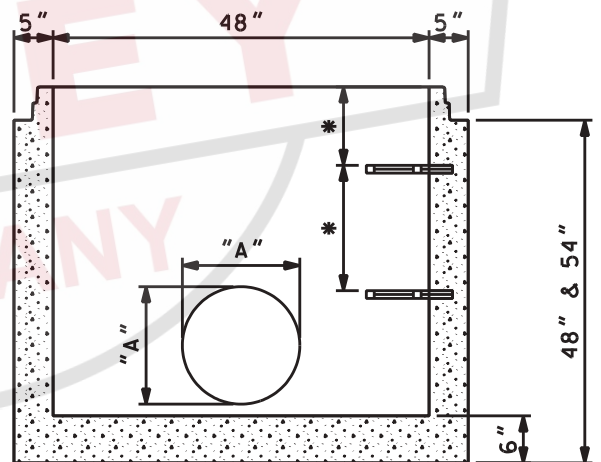
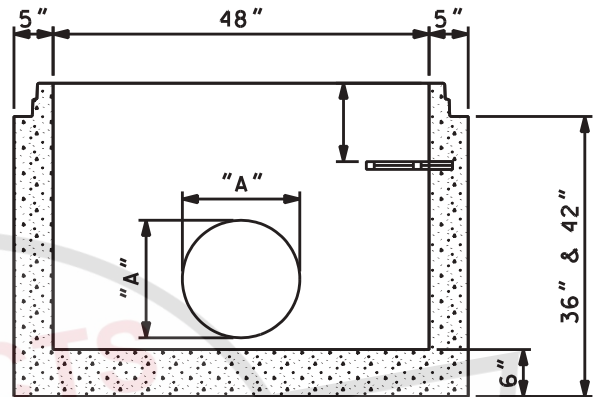
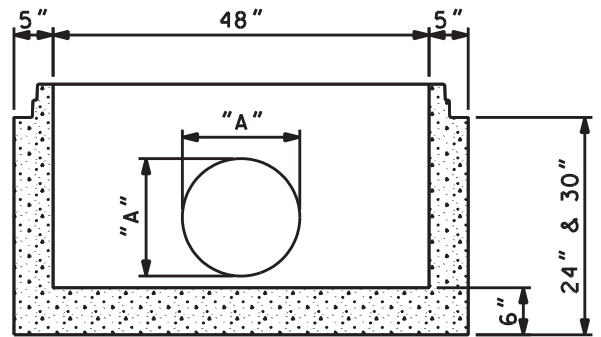
48"x24" RISER  
WEIGHT 1,700 lbs.



48"x36" RISER  
WEIGHT 2,550 lbs.



48"x48" RISER  
WEIGHT 3,468 lbs.



#### BASE WEIGHTS

24"	- 2,802 lbs.
30"	- 3,250 lbs.
36"	- 3,820 lbs.
42"	- 4,115 lbs.
48"	- 4,685 lbs.
54"	- 4,978 lbs.

DIMENSION "A"  
AS REQUIRED

#### GENERAL NOTES:

1. ALL MATERIAL, DESIGN, MANUFACTURE, PHYSICAL TEST REQUIREMENTS, FINISH MARKING, INSPECTION, REJECTION AND REPAIRS TO MEET "SPECIFICATIONS FOR PRECAST-REINFORCED CONCRETE MANHOLE SECTIONS", PER ASTM C-478 (LATEST REVISION).

2. CONCRETE STRENGTH PER ASTM C-478.

3. VERTICAL MANHOLE STEPS SHALL BE CONSISTENTLY SPACED AND SHALL COMPLY WITH OSHA (SUBPART D) "FIXED LADDERS" (SECTION 1910-27) AND/OR ASTM C-478.

\* CAN BE UTILIZED AS TDOT STANDARD: D-CB-10RA, 12RA, 13RA, 25RA, 28RA



HERMITAGE, TN LENOIR CITY, TN  
FRANKLIN, TN CHATANOOGA, TN

48" [1200mm] I.D. - PRECAST CONCRETE  
MONOBASE & RISER SECTIONS

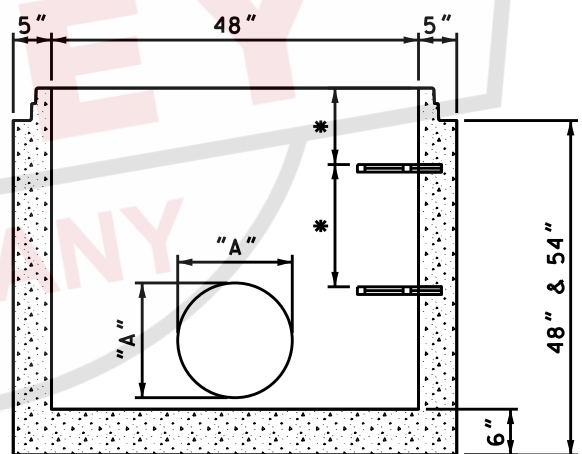
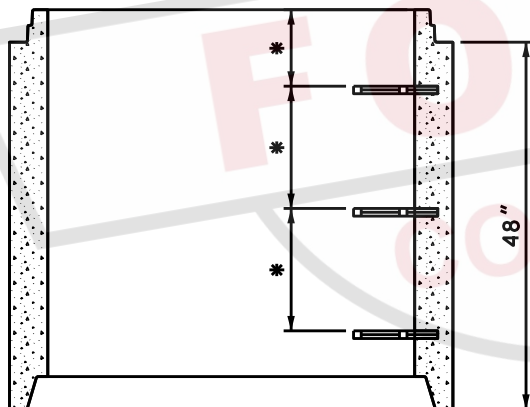
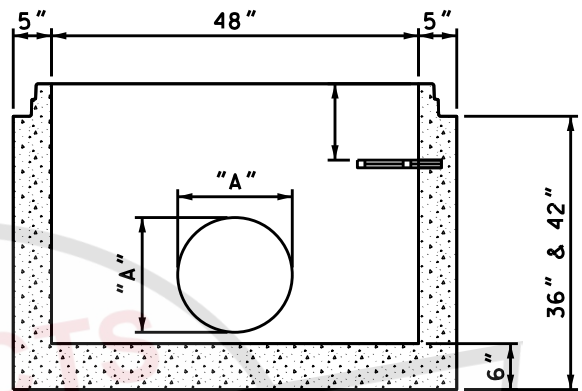
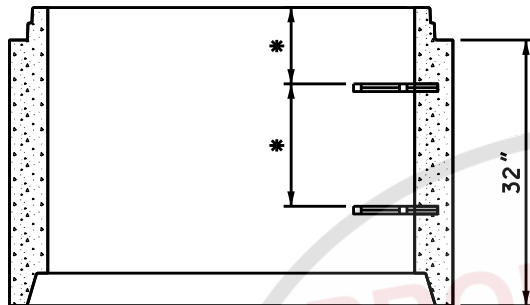
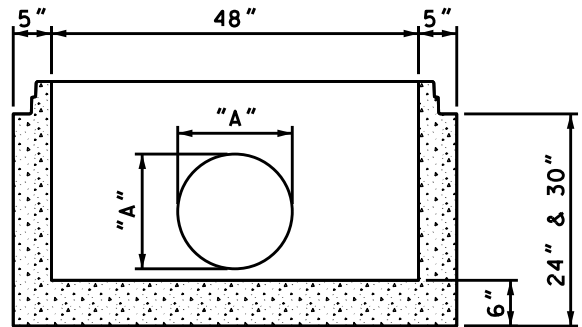
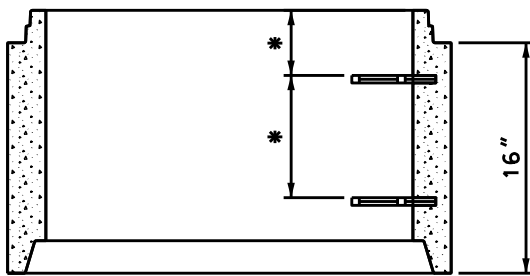
SCALE: NTS

PH# 1-800-737-0707

DWG# RS-401

DATE: 09/12/08

SHEET# 1 OF 1



### GENERAL NOTES:

1. ALL MATERIAL, DESIGN, MANUFACTURE, PHYSICAL TEST REQUIREMENTS, FINISH MARKING, INSPECTION, REJECTION AND REPAIRS TO MEET "SPECIFICATIONS FOR PRECAST-REINFORCED CONCRETE MANHOLE SECTIONS", PER ASTM C-478 (LATEST REVISION).
2. CONCRETE STRENGTH PER ASTM C-478.
3. VERTICAL MANHOLE STEPS SHALL BE CONSISTENTLY SPACED AND SHALL COMPLY WITH OSHA (SUBPART D) "FIXED LADDERS" (SECTION 1910-27) AND/OR ASTM C-478.

### BASE WEIGHTS

24"	- 2.802 lbs.
30"	- 3.250 lbs.
36"	- 3.820 lbs.
42"	- 4.115 lbs.
48"	- 4.685 lbs.
54"	- 4.978 lbs.

DIMENSION "A"  
AS REQUIRED



48" [1200mm] I.D. - PRECAST CONCRETE  
MONO BASE & RISER SECTIONS (HVUD)

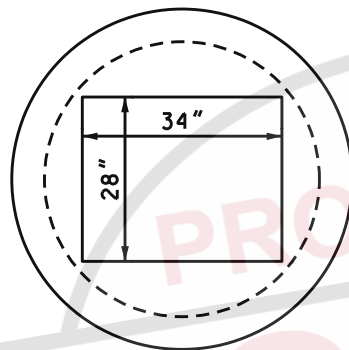
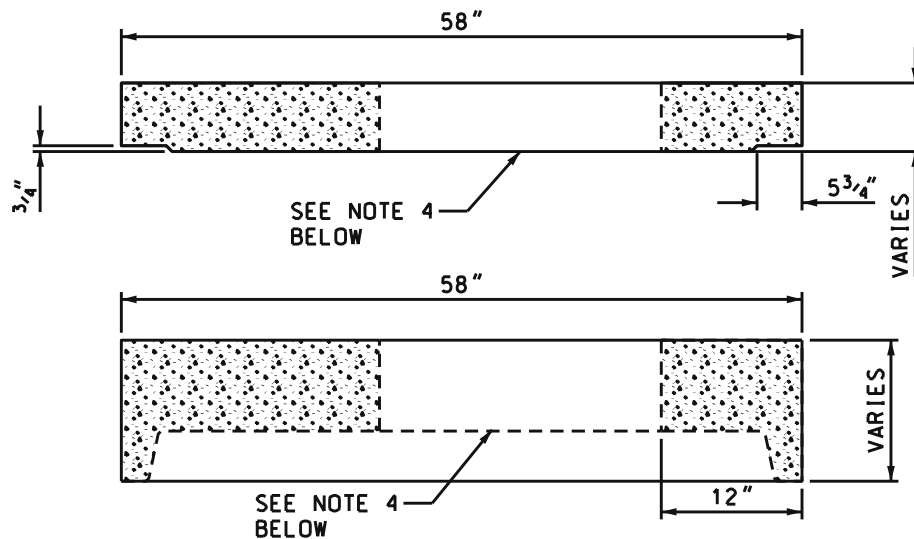
SCALE: NTS

PH# 1-800-737-0707

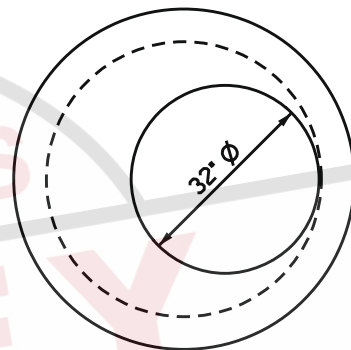
DWG# RS-402H

DATE: 07/01/16

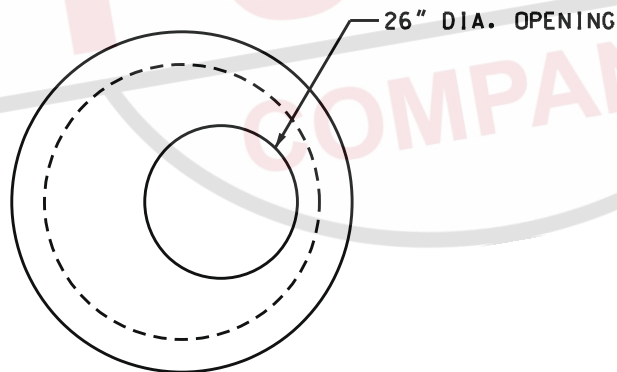
SHEET# 1 OF 1



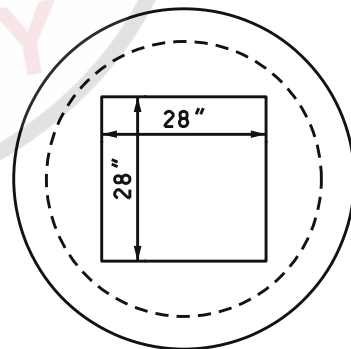
TDOT TYPE 12 CATCH BASIN



SHALLOW MANHOLE



STANDARD MANHOLE FLAT TOP



METRO DR105  
CATCH BASIN

GENERAL NOTES:

1. ALL MATERIAL, DESIGN, MANUFACTURE, PHYSICAL TEST REQUIREMENTS, FINISH MARKING, INSPECTION, REJECTION AND REPAIRS TO MEET "SPECIFICATIONS FOR PRECAST-REINFORCED CONCRETE MANHOLE SECTIONS", PER ASTM C-478 (LATEST REVISION).

2. CONCRETE STRENGTH PER ASTM C-478.

3. MAXIMUM FLAT TOP WEIGHT - 1.973 lbs

4. OTHER HOLE CONFIGURATIONS AVAILABLE.

\* CAN BE UTILIZED AS TDOT STANDARD: D-CB-10RA, 12RA, 13RA, 25RA, 28RA



HERMITAGE, TN LENOIR CITY, TN  
FRANKLIN, TN CHATANOOGA, TN

48" [1200mm] DIAMETER FLAT TOP

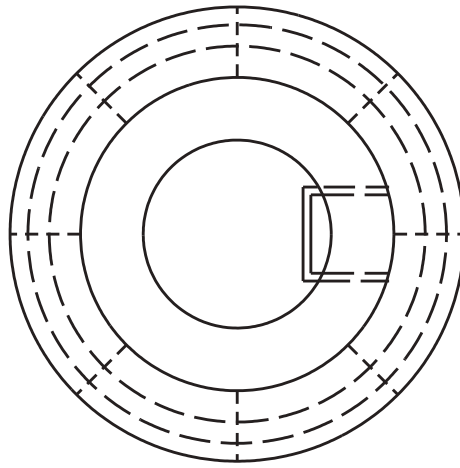
SCALE: NTS

PH• 1-800-737-0707

DWG# RS-404

DATE: 09/12/08

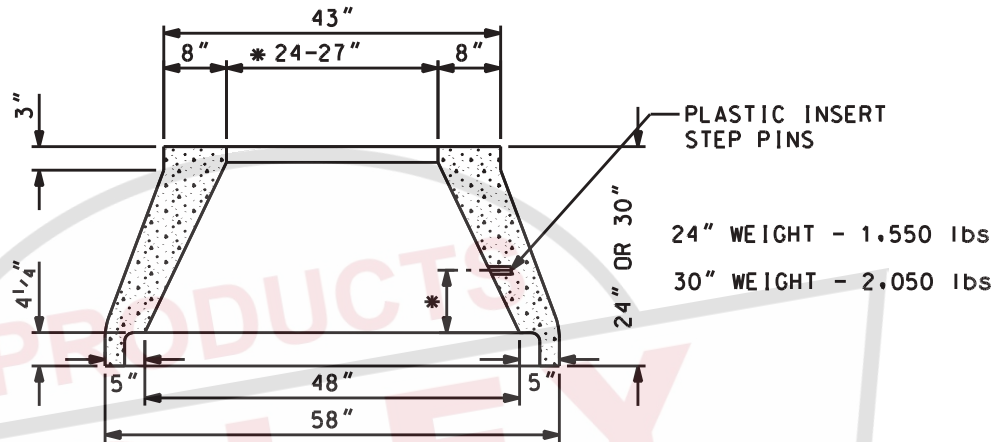
SHEET# 1 OF 1



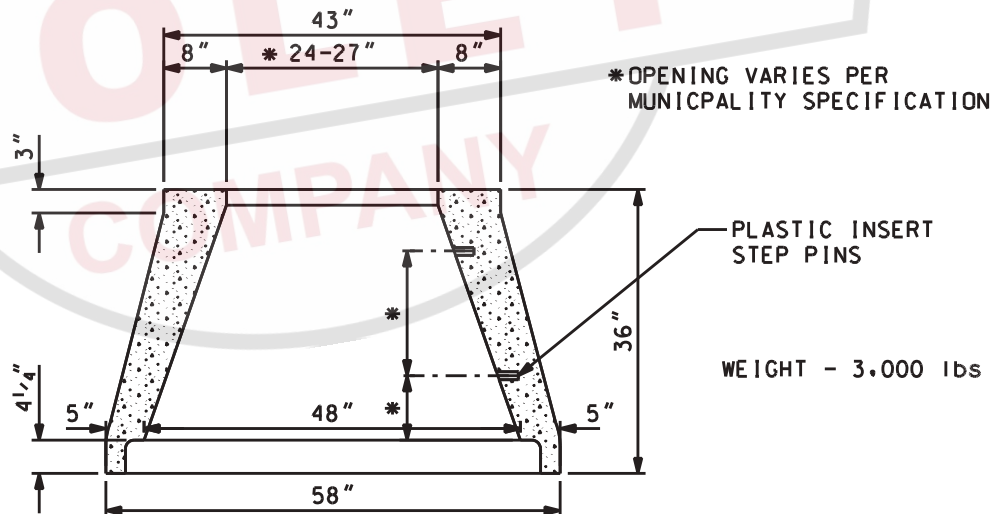
TOP VIEW

48"x24"

48"x30" CONCENTRIC CONE



48"x36" CONCENTRIC CONE



### GENERAL NOTES:

1. ALL MATERIAL, DESIGN, MANUFACTURE, PHYSICAL TEST REQUIREMENTS, FINISH MARKING, INSPECTION, REJECTION AND REPAIRS TO MEET "SPECIFICATIONS FOR PRECAST-REINFORCED CONCRETE MANHOLE SECTIONS", PER ASTM C-478 (LATEST REVISION).
2. CONCRETE STRENGTH PER ASTM C-478.
3. VERTICAL MANHOLE STEPS SHALL BE CONSISTENTLY SPACED AND SHALL COMPLY WITH OSHA (SUBPART D) "FIXED LADDERS" (SECTION 1910-27) AND/OR ASTM C-478.



HERMITAGE, TN LENOIR CITY, TN  
FRANKLIN, TN CHATANOOGA, TN

48" [1200mm] DIAMETER PRECAST  
MANHOLE CONCENTRIC CONES

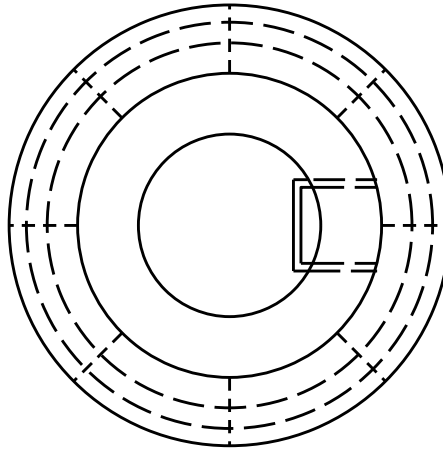
SCALE: NTS

PH# 1-800-737-0707

DWG# RS-408

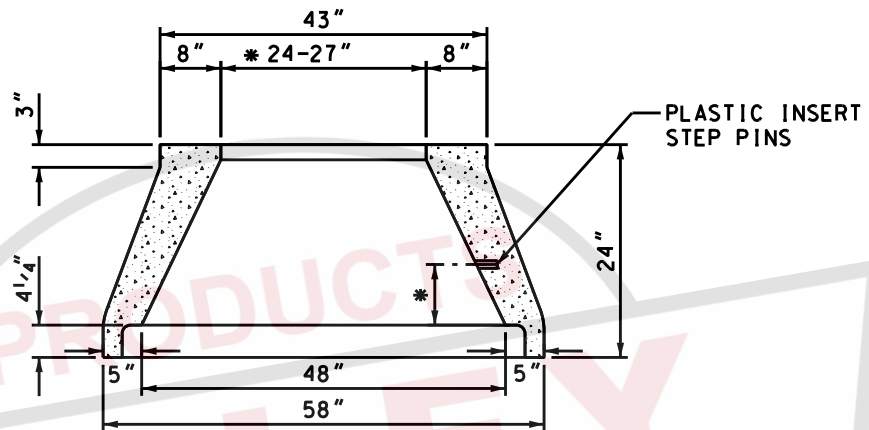
DATE: 09/12/08

SHEET# 1 OF 1

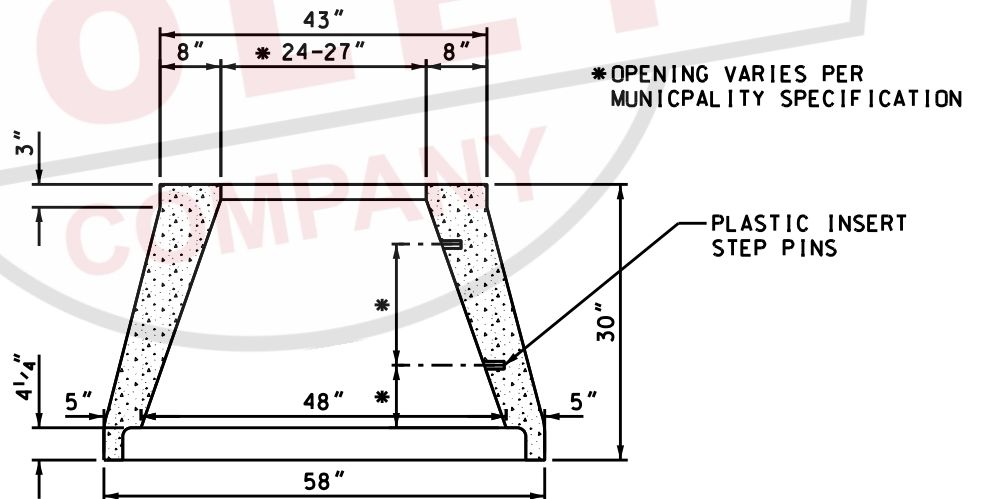


TOP VIEW

48"x24" CONCENTRIC CONE



48"x30" CONCENTRIC CONE



**GENERAL NOTES:**

1. ALL MATERIAL, DESIGN, MANUFACTURE, PHYSICAL TEST REQUIREMENTS, FINISH MARKING, INSPECTION, REJECTION AND REPAIRS TO MEET "SPECIFICATIONS FOR PRECAST-REINFORCED CONCRETE MANHOLE SECTIONS", PER ASTM C-478 (LATEST REVISION).
2. CONCRETE STRENGTH PER ASTM C-478.
3. VERTICAL MANHOLE STEPS SHALL BE CONSISTENTLY SPACED AND SHALL COMPLY WITH OSHA (SUBPART D) "FIXED LADDERS" (SECTION 1910-27) AND/OR ASTM C-478.



48" [1200mm] DIAMETER PRECAST  
MANHOLE CONCENTRIC CONES (HVUD)

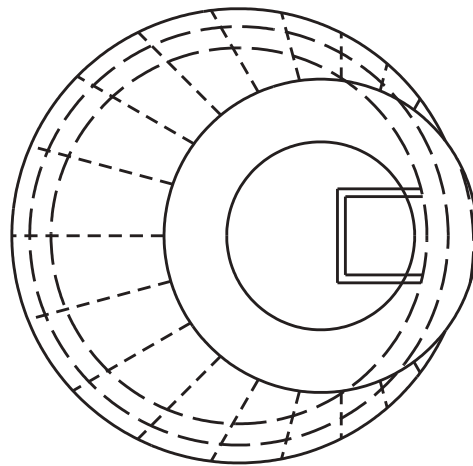
SCALE: NTS

PH# 1-800-737-0707

DWG# RS-408H

DATE: 09/12/08

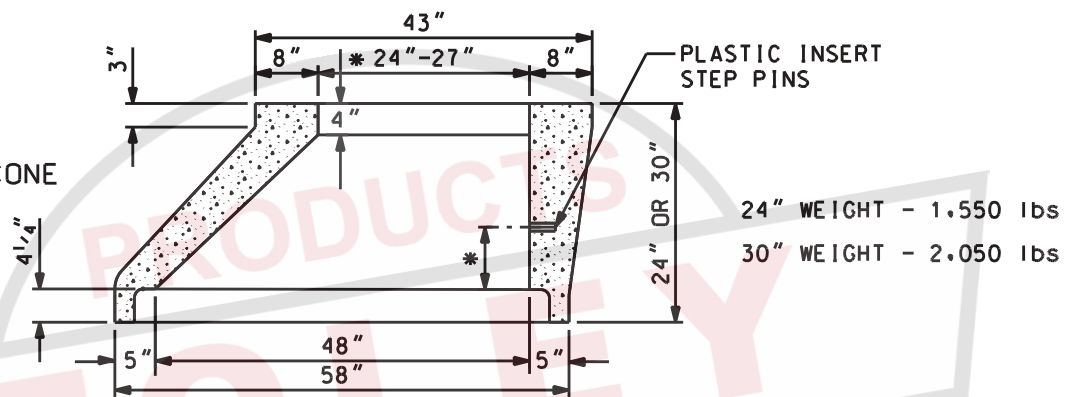
SHEET# 1 OF 1



TOP VIEW

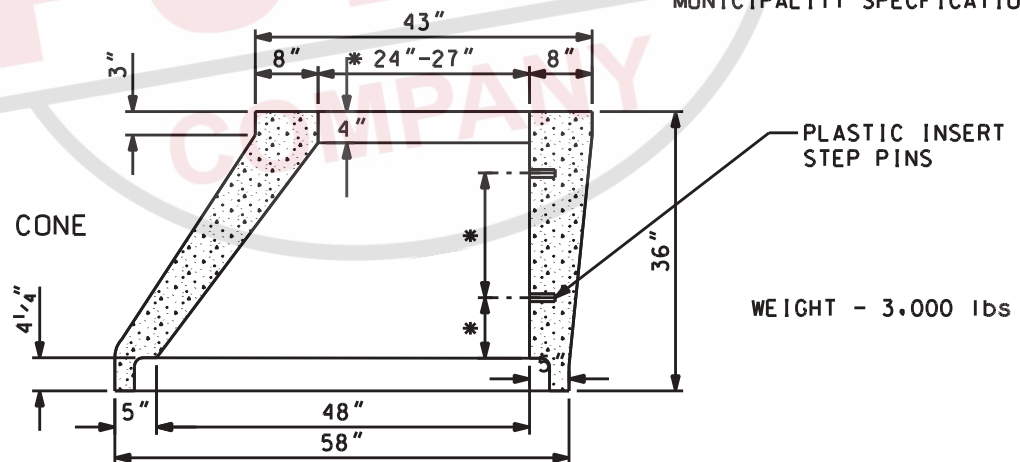
48"x24"

48"x30" ECCENTRIC CONE



\* OPENING VARIES PER MUNICIPALITY SPECIFICATIONS

48"x36" ECCENTRIC CONE



### GENERAL NOTES:

1. ALL MATERIAL, DESIGN, MANUFACTURE, PHYSICAL TEST REQUIREMENTS, FINISH MARKING, INSPECTION, REJECTION AND REPAIRS TO MEET "SPECIFICATIONS FOR PRECAST-REINFORCED CONCRETE MANHOLE SECTIONS", PER ASTM C-478 (LATEST REVISION).
2. CONCRETE STRENGTH PER ASTM C-478.
3. VERTICAL MANHOLE STEPS SHALL BE CONSISTENTLY SPACED AND SHALL COMPLY WITH OSHA (SUBPART D) "FIXED LADDERS" (SECTION 1910-27) AND/OR ASTM C-478



HERMITAGE, TN LENOIR CITY, TN  
FRANKLIN, TN CHATANOOGA, TN

48" [1200mm] DIAMETER PRECAST  
MANHOLE ECCENTRIC CONES

SCALE: NTS

PH# 1-800-737-0707

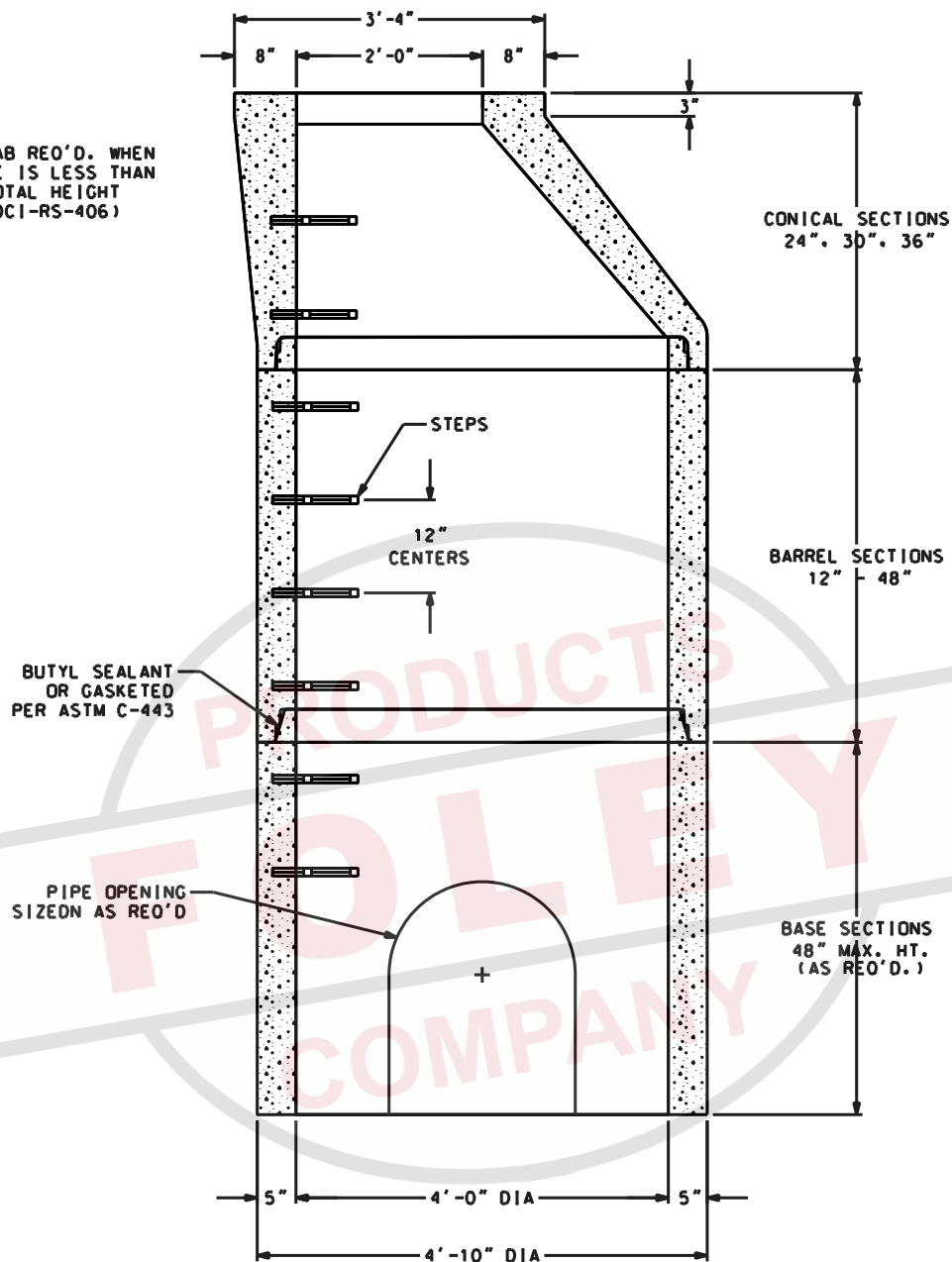
DWG# RS-410

DATE: 09/12/08

SHEET# 1 OF 1



TOP SLAB REQ'D. WHEN  
MANHOLE IS LESS THAN  
4.5' TOTAL HEIGHT  
(SEE SDC1-RS-406)



SECTION VIEW

**GENERAL NOTES:**

1. ALL MATERIAL, DESIGN, MANUFACTURE, PHYSICAL TEST REQUIREMENTS, FINISH MARKING, INSPECTION, REJECTION AND REPAIRS TO MEET "SPECIFICATIONS FOR PRECAST-REINFORCED CONCRETE MANHOLE SECTIONS", PER ASTM C-478 (LATEST REVISION).

WEIGHTS: BASE - 850 LBS./VERT. FT  
RISER - 850 LBS./VERT. FT  
CONICAL - 24" HT = 1.550 LBS  
30" HT = 2.050 LBS  
36" HT = 3.000 LBS



HERMITAGE, TN LENOIR CITY, TN  
FRANKLIN, TN CHATANOOGA, TN

48" [1200mm] I.D. - OPEN BOTTOM MANHOLE

SCALE: NTS

PH\* 1-800-737-0707

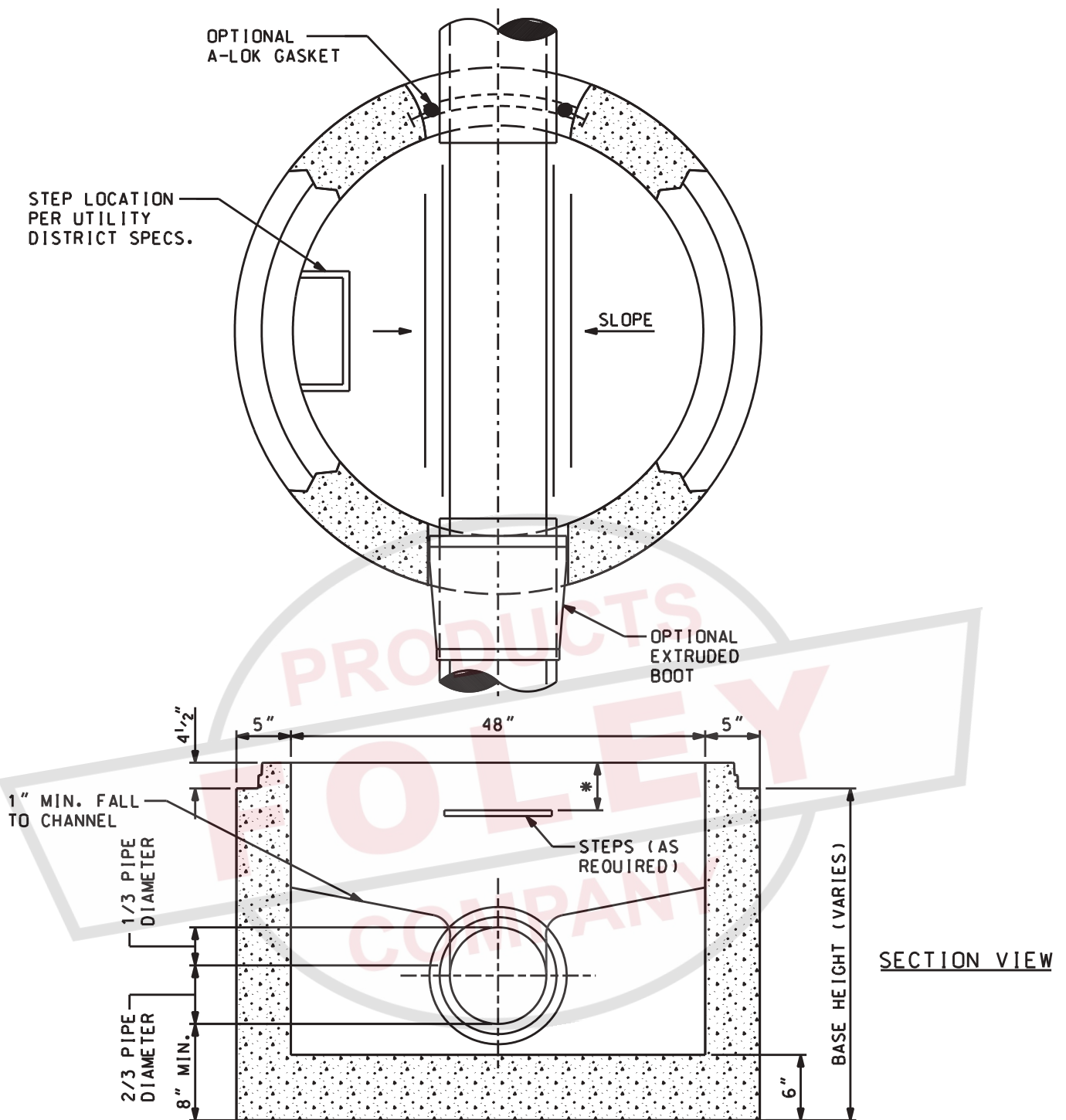
DWG# RS-411

DATE: 09/12/08

SHEET# 1 OF 1







#### GENERAL NOTES:

1. ALL MATERIAL, DESIGN, MANUFACTURE, PHYSICAL TEST REQUIREMENTS, FINISH MARKING, INSPECTION, REJECTION AND REPAIRS TO MEET / OR EXCEED "SPECIFICATIONS FOR PRECAST-REINFORCED CONCRETE MANHOLE SECTIONS", PER ASTM C-478 (LATEST REVISION).
2. CONCRETE COVER ON REBAR: 2" (MIN.)
3. RESILIENT CONNECTORS MEET "SPECIFICATIONS FOR RESILIENT CONNECTORS BETWEEN REINFORCED CONCRETE MANHOLE STRUCTURES, PIPES AND LATERALS", PER ASTM C-923 (LATEST REVISION).
4. INVERT AS REQUIRED BY PLANS OR MUNICIPAL SPECIFICATIONS.



HERMITAGE, TN LENOIR CITY, TN  
FRANKLIN, TN CHATANOOGA, TN

48" DIAMETER DEVELOPED BASE MANHOLE

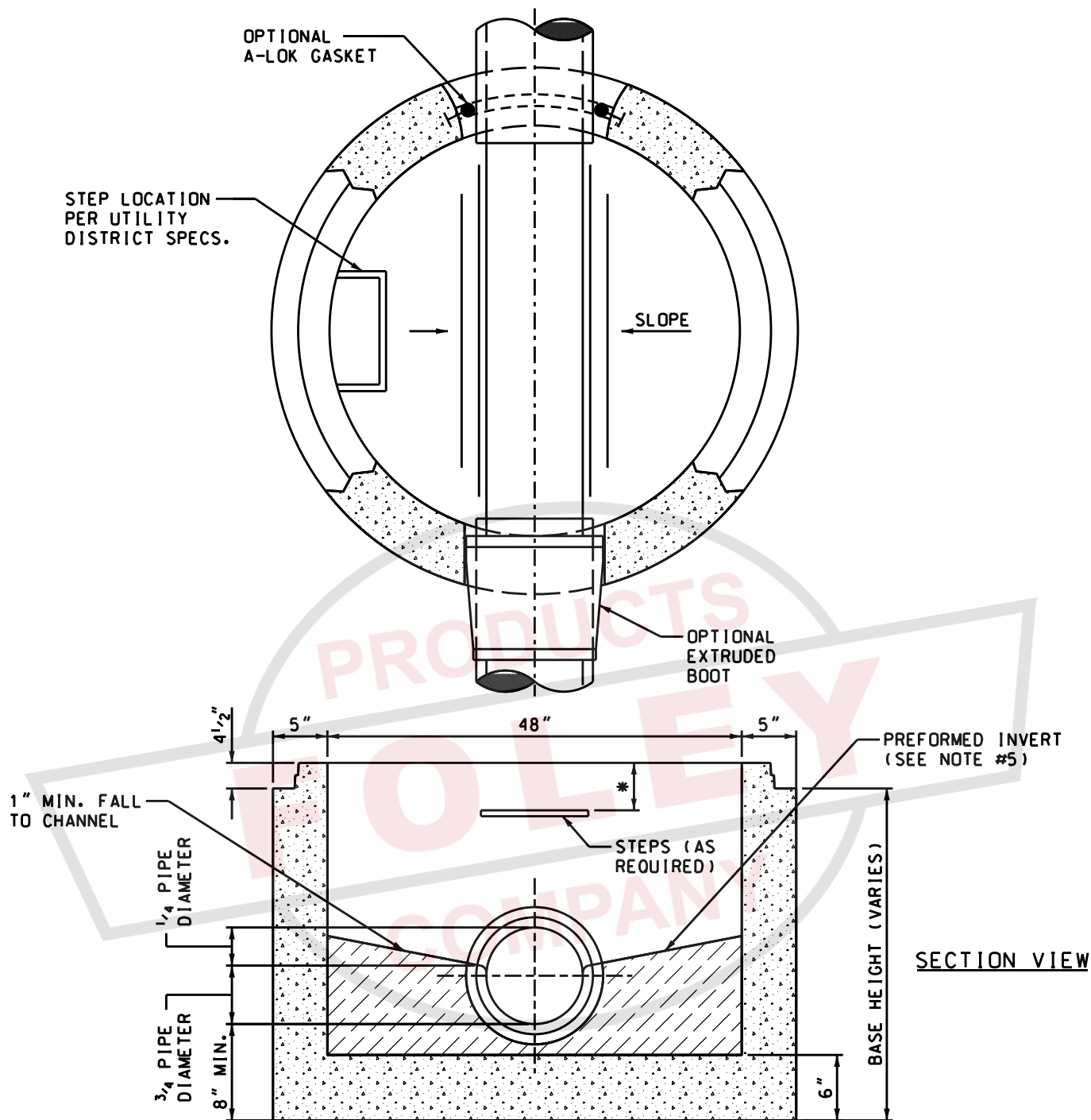
SCALE: NTS

PH\* 1-800-737-0707

DWG# RS-412-1

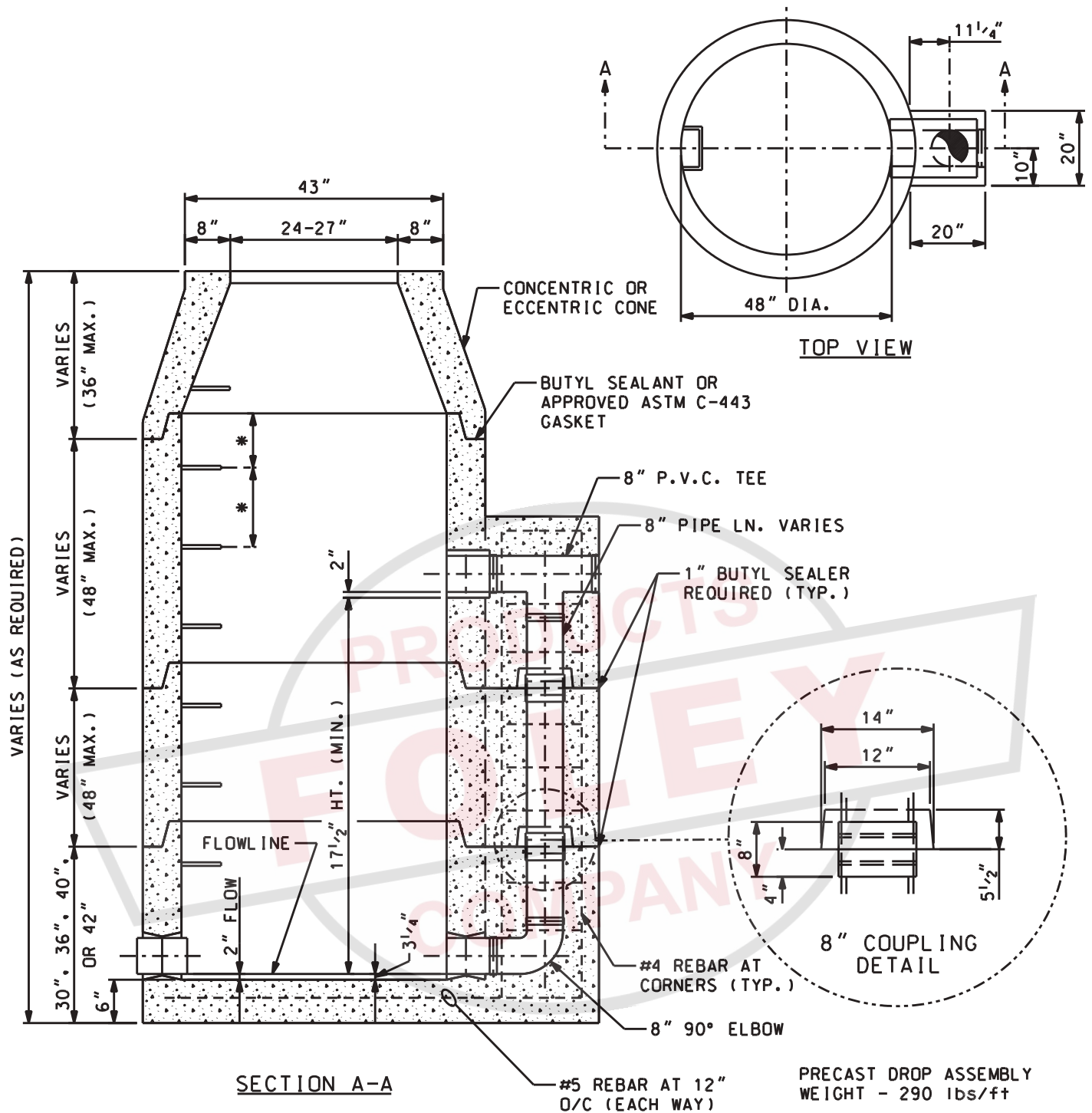
DATE: 09/12/08

SHEET# 1 OF 1



#### GENERAL NOTES:

1. ALL MATERIAL, DESIGN, MANUFACTURE, PHYSICAL TEST REQUIREMENTS, FINISH MARKING, INSPECTION, REJECTION AND REPAIRS TO MEET / OR EXCEED "SPECIFICATIONS FOR PRECAST-REINFORCED CONCRETE MANHOLE SECTIONS", PER ASTM C-478 (LATEST REVISION).
2. CONCRETE COVER ON REBAR: 2" (MIN.)
3. RESILIENT CONNECTORS MEET "SPECIFICATIONS FOR RESILIENT CONNECTORS BETWEEN REINFORCED CONCRETE MANHOLE STRUCTURES, PIPES AND LATERALS", PER ASTM C-923 (LATEST REVISION).
4. INVERT AS REQUIRED BY PLANS OR MUNICIPAL SPECIFICATIONS.



#### GENERAL NOTES:

1. ALL MATERIAL, DESIGN, MANUFACTURE, PHYSICAL TEST REQUIREMENTS, FINISH MARKING, INSPECTION, REJECTION AND REPAIRS TO MEET / OR EXCEED "SPECIFICATIONS FOR PRECAST-REINFORCED CONCRETE MANHOLE SECTIONS", PER ASTM C-478 (LATEST REVISION).
2. RESILIENT CONNECTORS MEET "SPECIFICATIONS FOR RESILIENT CONNECTORS BETWEEN REINFORCED CONCRETE MANHOLE STRUCTURES, PIPES AND LATERALS", PER ASTM C-923 (LATEST REVISION). RESILIENT CONNECTORS SHALL MEET AND/OR EXCEED ASTM C-478 GASKET REQUIREMENTS. 1" MASTIC BUTYL WILL BE ADDED BETWEEN THE JOINTS OF THE PRECAST DROP AND SHALL BE TIED INTO THE BARREL SECTION SEALANT. ALL ANGLES AND FALL SHALL BE ACCORDING TO PLANS.
3. VERTICAL MANHOLE STEPS SHALL BE CONSISTENTLY SPACED AND SHALL COMPLY WITH OSHA (SUBPART D) "FIXED LADDERS" (SECTION 1910-27) AND/OR ASTM C-478.
4. CONCRETE 4500 PSI AT 28 DAYS. CONCRETE COVER ON REBAR: 2" (MIN.) BASE WEIGHT VARIES



HERMITAGE, TN LENOIR CITY, TN  
FRANKLIN, TN CHATANOOGA, TN

48" DIAMETER PRECAST DROP MANHOLE

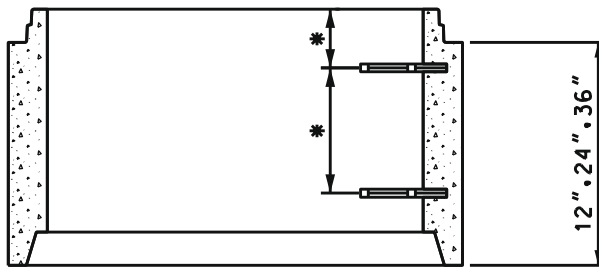
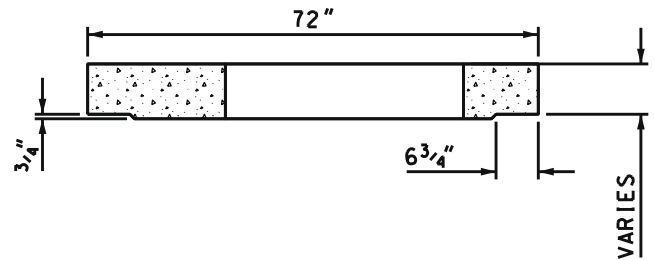
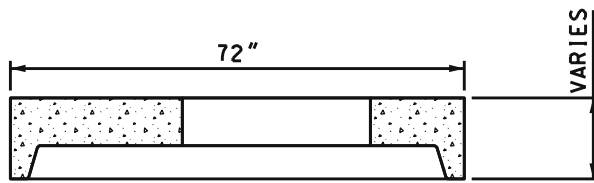
SCALE: NTS

PH# 1-800-737-0707

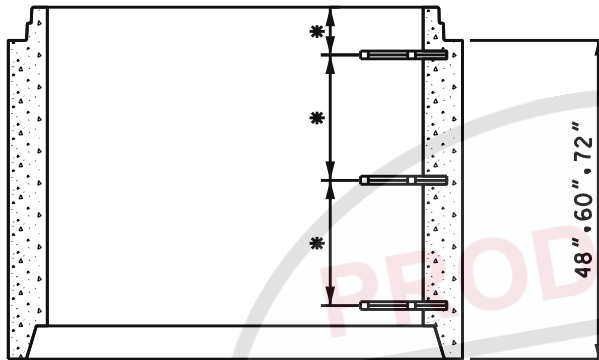
DWG# RS-414

DATE: 09/12/08

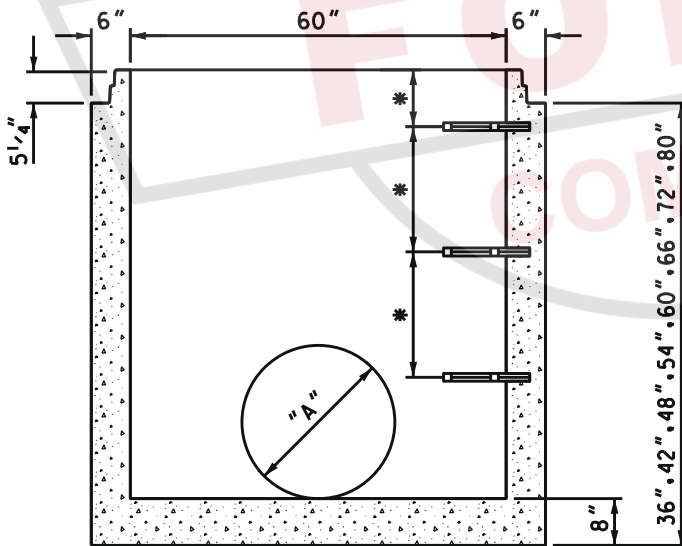
SHEET# 1 OF 1



RISER



RISER



MONO BASE SECTION

**RISER SECTION WEIGHTS**  
(CUSTOM HEIGHTS AVAILABLE)

12"	- 1,300 lbs.
24"	- 2,600 lbs.
36"	- 3,900 lbs.
48"	- 5,200 lbs.
60"	- 6,500 lbs.
72"	- 7,800 lbs.

**BASE SECTION MAX. WEIGHTS**  
(CUSTOM HEIGHTS AVAILABLE)

36"	- 5,856 lbs.
42"	- 6,506 lbs.
48"	- 7,156 lbs.
54"	- 7,806 lbs.
60"	- 8,456 lbs.
66"	- 9,106 lbs.
72"	- 9,756 lbs.
80"	- 10,406 lbs.

DIMENSION "A"  
AS REQUIRED

**GENERAL NOTES:**

1. ALL MATERIAL, DESIGN, MANUFACTURE, PHYSICAL TEST REQUIREMENTS, FINISH MARKING, INSPECTION, REJECTION AND REPAIRS TO MEET "SPECIFICATIONS FOR PRECAST-REINFORCED CONCRETE MANHOLE SECTIONS", PER ASTM C-478 (LATEST REVISION).
2. VERTICAL MANHOLE STEPS SHALL BE CONSISTENTLY SPACED AND SHALL COMPLY WITH OSHA (SUBPART D) "FIXED LADDERS" (SECTION 1910-27) AND/OR ASTM C-478.

3. CONCRETE STRENGTH PER ASTM C-478.

\* CAN BE UTILIZED AS TDOT STANDARD:  
D-CB-12RB, 13RB, 25RB, 28RB, 38RB, 41RB  
42RB, D-MH-2



HERMITAGE, TN LENOIR CITY, TN  
FRANKLIN, TN CHATANOOGA, TN

60" [1500mm] I.D. PRECAST MANHOLE  
BASE & RISER SECTIONS

SCALE: NTS

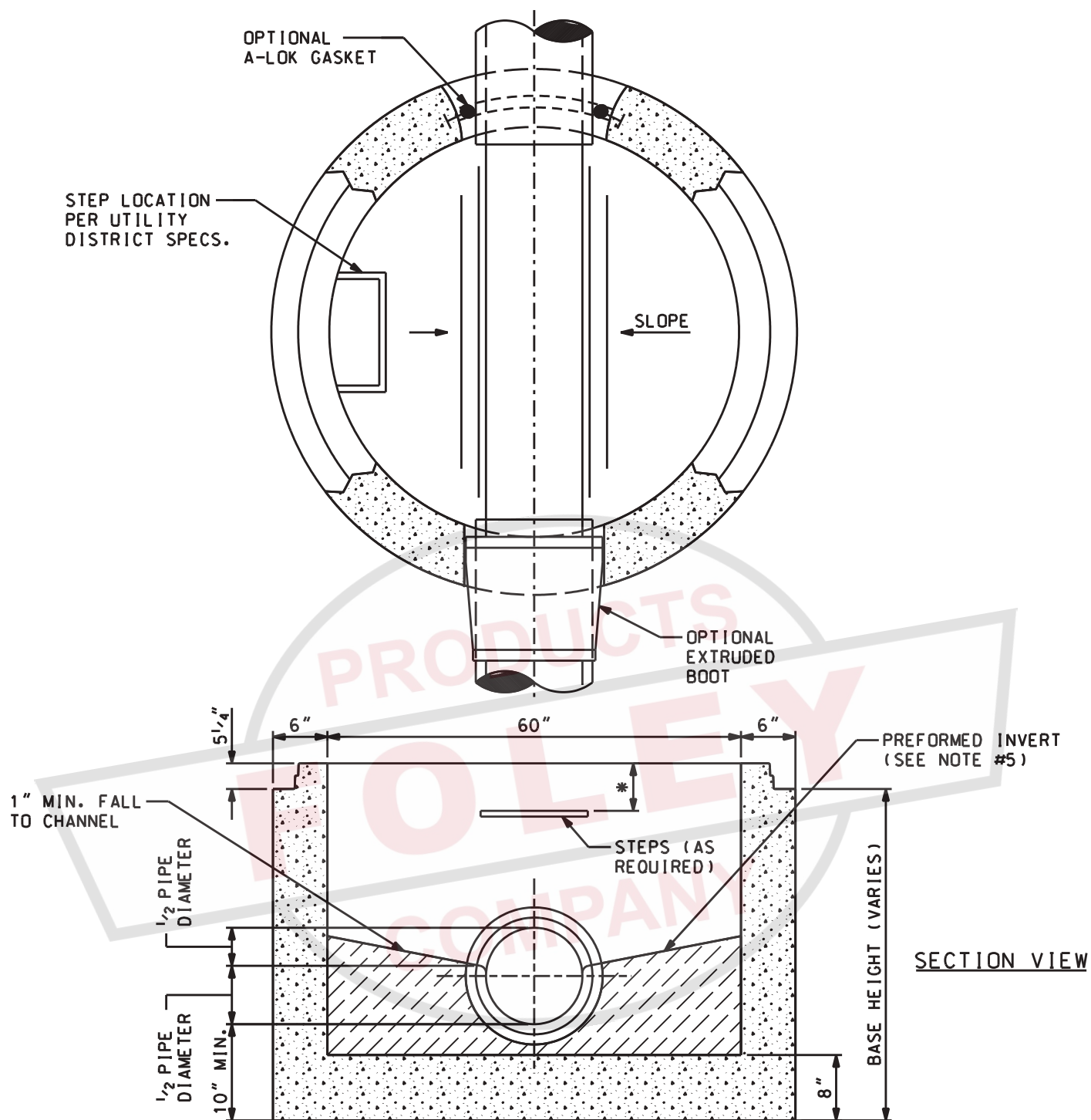
PH# 1-800-737-0707

DWG# RS-416

DATE: 09/12/08

SHEET# 1 OF 1





#### GENERAL NOTES:

1. ALL MATERIAL, DESIGN, MANUFACTURE, PHYSICAL TEST REQUIREMENTS, FINISH MARKING, INSPECTION, REJECTION AND REPAIRS TO MEET / OR EXCEED "SPECIFICATIONS FOR PRECAST-REINFORCED CONCRETE MANHOLE SECTIONS", PER ASTM C-478 (LATEST REVISION).
2. CONCRETE COVER ON REBAR: 2" (MIN.)
3. RESILIENT CONNECTORS MEET "SPECIFICATIONS FOR RESILIENT CONNECTORS BETWEEN REINFORCED CONCRETE MANHOLE STRUCTURES, PIPES AND LATERALS", PER ASTM C-923 (LATEST REVISION).
4. INVERT AS REQUIRED BY PLANS OR MUNICIPAL SPECIFICATIONS.



HERMITAGE, TN LENOIR CITY, TN  
FRANKLIN, TN CHATANOOGA, TN

60" DIAMETER DEVELOPED BASE MANHOLE

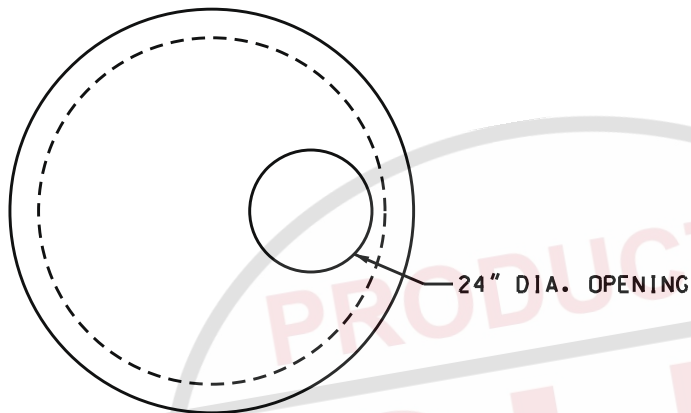
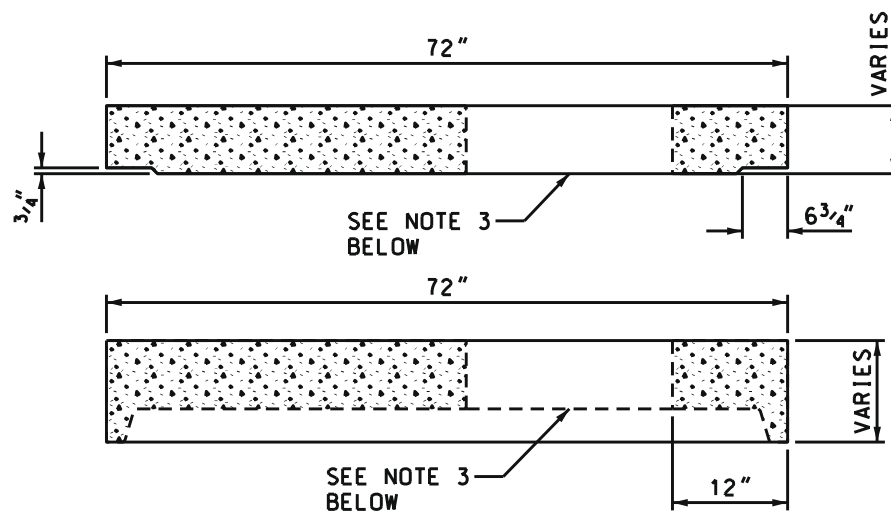
SCALE: NTS

PH\* 1-800-737-0707

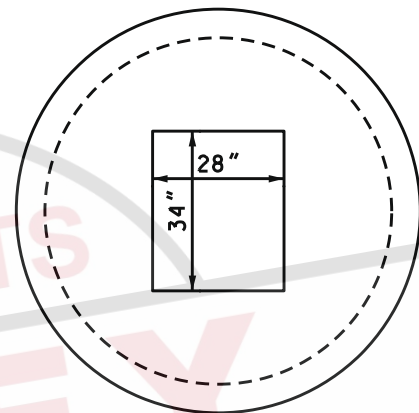
DWG# RS-417

DATE: 09/12/08

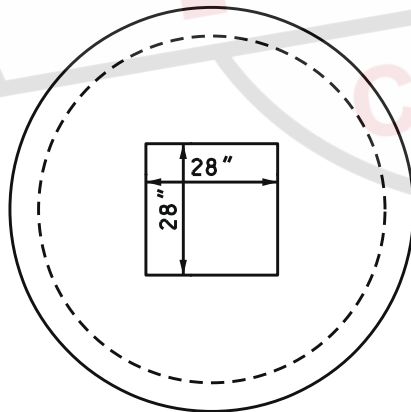
SHEET# 1 OF 1



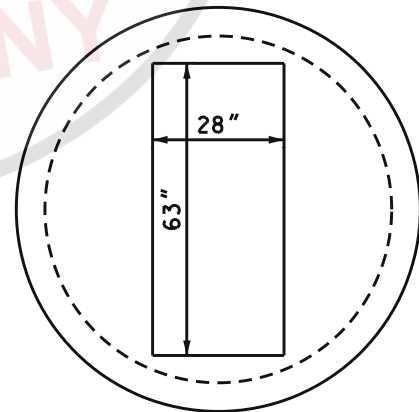
STANDARD MANHOLE FLAT TOP



TDOT TYPE 12  
CATCH BASIN



METRO DR105  
CATCH BASIN



METRO DR110  
CATCH BASIN

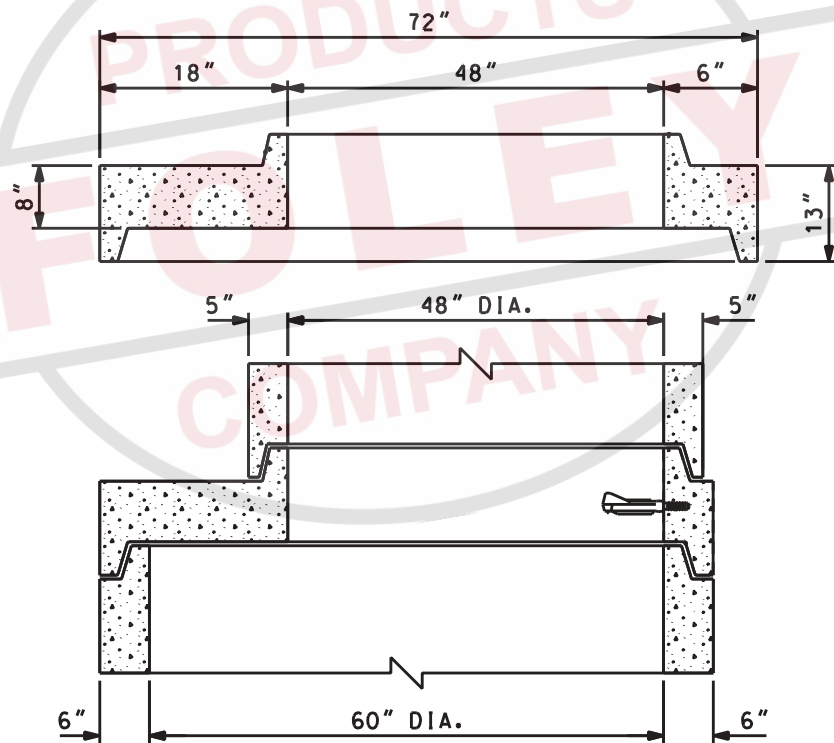
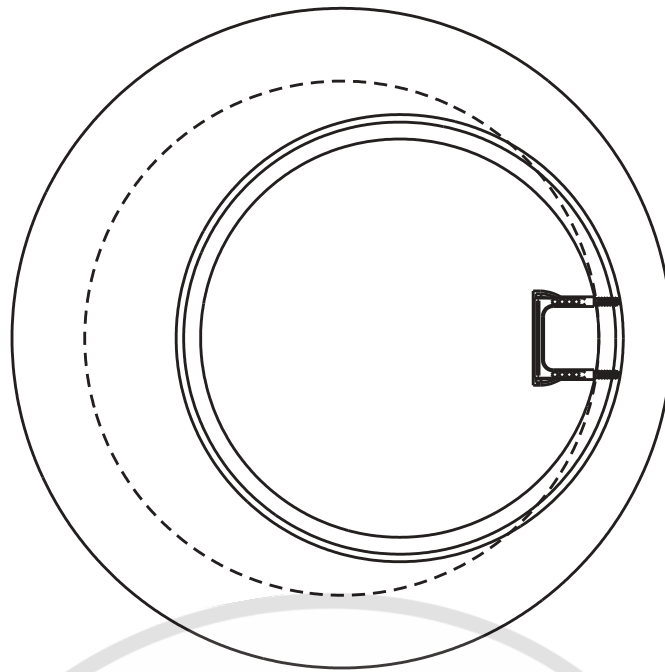
GENERAL NOTES:

1. ALL MATERIAL, DESIGN, MANUFACTURE, PHYSICAL TEST REQUIREMENTS, FINISH MARKING, INSPECTION, REJECTION AND REPAIRS TO MEET "SPECIFICATIONS FOR PRECAST-REINFORCED CONCRETE MANHOLE SECTIONS", PER ASTM C-478 (LATEST REVISION).
  2. CONCRETE STRENGTH PER ASTM C-478. REINFORCING: GRADE 60
  3. OTHER HOLE CONFIGURATIONS AVAILABLE.
- \* CAN BE UTILIZED AS TDOT STANDARD: D-CB-12RB, 13RB, 25RB, 28RB, 38RB, 42RB



HERMITAGE, TN LENOIR CITY, TN  
FRANKLIN, TN CHATANOOGA, TN





60" DIA. TO 48" DIA. MANHOLE TRANSITION SECTION

#### GENERAL NOTES:

1. ALL MATERIAL, DESIGN, MANUFACTURE, PHYSICAL TEST REQUIREMENTS, FINISH MARKING, INSPECTION, REJECTION AND REPAIRS TO MEET "SPECIFICATIONS FOR PRECAST-REINFORCED CONCRETE MANHOLE SECTIONS", PER ASTM C-478 (LATEST REVISION).

2. CONCRETE STRENGTH: 4,500 Psi AT 28 DAYS



HERMITAGE, TN LENOIR CITY, TN  
FRANKLIN, TN CHATANOOGA, TN

60" [1500mm] DIAMETER TO 48" [1200mm] DIAMETER  
MANHOLE TRANSITION

SCALE: NTS

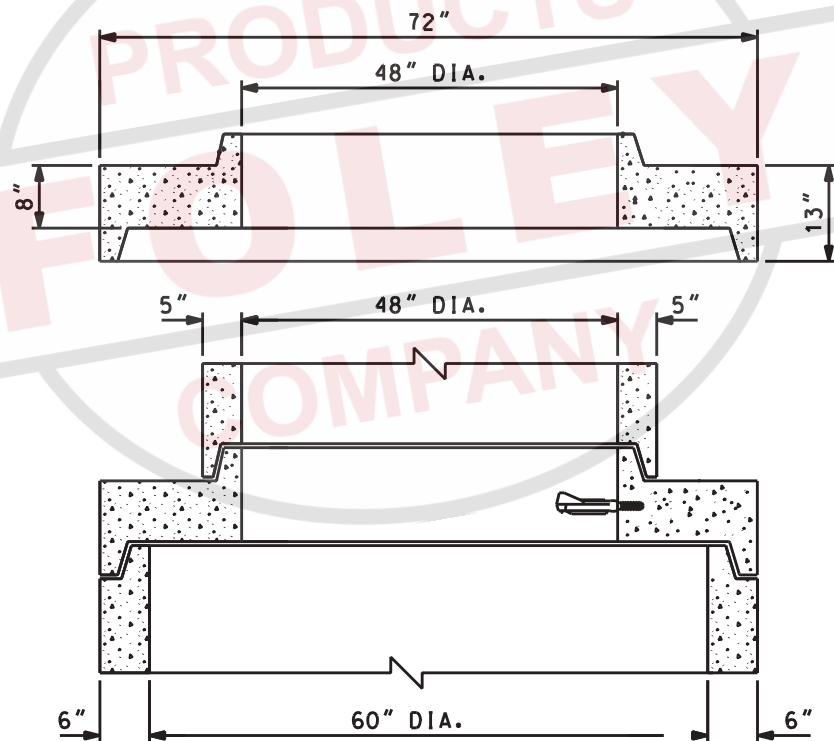
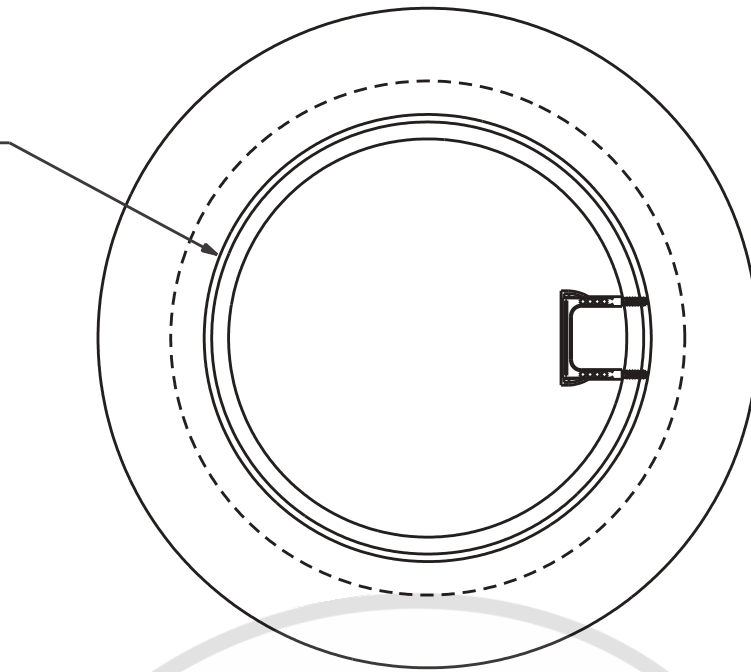
PH\* 1-800-737-0707

DWG# RS-422

DATE: 09/12/08

SHEET# 1 OF 1

48" DIA.  
TRANSITION  
CENTERED



60" DIA. TO 48" DIA. MANHOLE TRANSITION SECTION

# GENERAL NOTES:

1. ALL MATERIAL, DESIGN, MANUFACTURE, PHYSICAL TEST REQUIREMENTS, FINISH MARKING, INSPECTION, REJECTION AND REPAIRS TO MEET "SPECIFICATIONS FOR PRECAST-REINFORCED CONCRETE MANHOLE SECTIONS", PER ASTM C-478 (LATEST REVISION).



HERMITAGE, TN LENOIR CITY, TN  
FRANKLIN, TN CHATANOOGA, TN

60" [1500mm] DIAMETER TO 48" [1200mm] DIAMETER  
MANHOLE TRANSITION

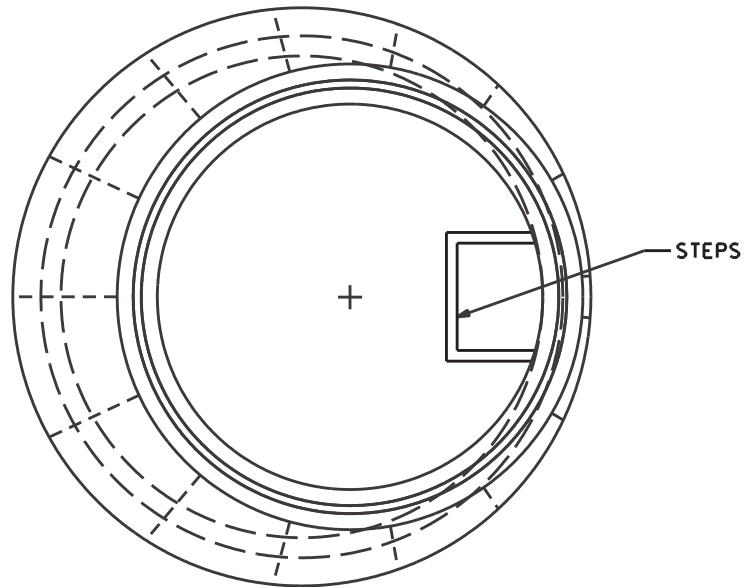
SCALE: NTS

PH\* 1-800-737-0707

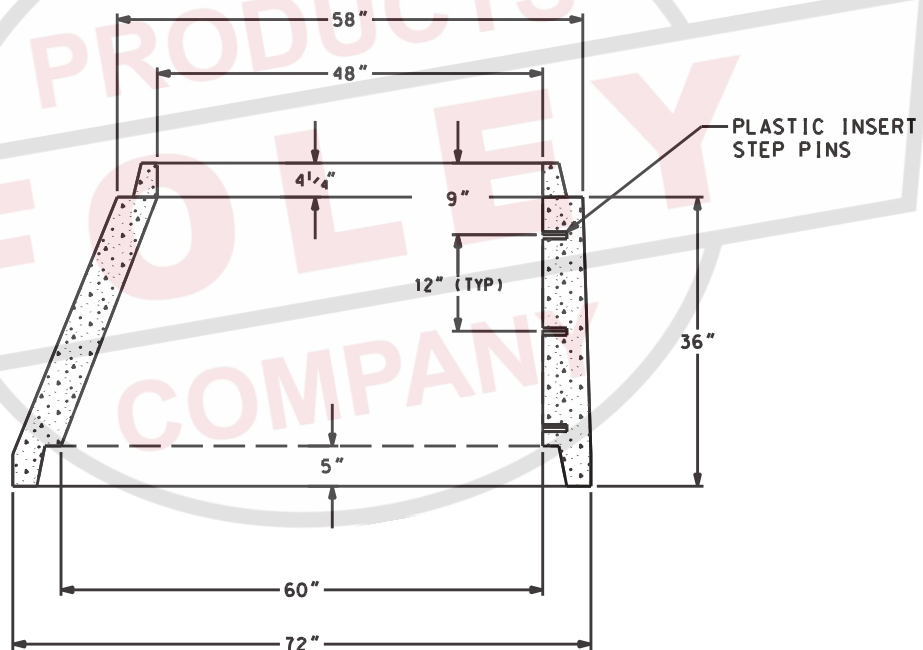
DWG# RS-422-1

DATE: 12/03/10

SHEET# 1 OF 1



PLAN VIEW



ELEVATION VIEW

**GENERAL NOTES:**

1. ALL MATERIAL, DESIGN, MANUFACTURE, PHYSICAL TEST REQUIREMENTS, FINISH MARKING, INSPECTION, REJECTION AND REPAIRS TO MEET "SPECIFICATIONS FOR PRECAST-REINFORCED CONCRETE MANHOLE SECTIONS", PER ASTM C-478 (LATEST REVISION).
2. CONCRETE STRENGTH PER ASTM C-478.
3. VERTICAL MANHOLE STEPS SHALL BE CONSISTENTLY SPACED AND SHALL COMPLY WITH OSHA (SUBPART D) "FIXED LADDERS" (SECTION 1910-27) AND/OR ASTM C-478



HERMITAGE, TN LENOIR CITY, TN  
FRANKLIN, TN CHATANOOGA, TN

60" (1524mm) TO 48" (1200mm) REDUCER  
MANHOLE ECCENTRIC CONE

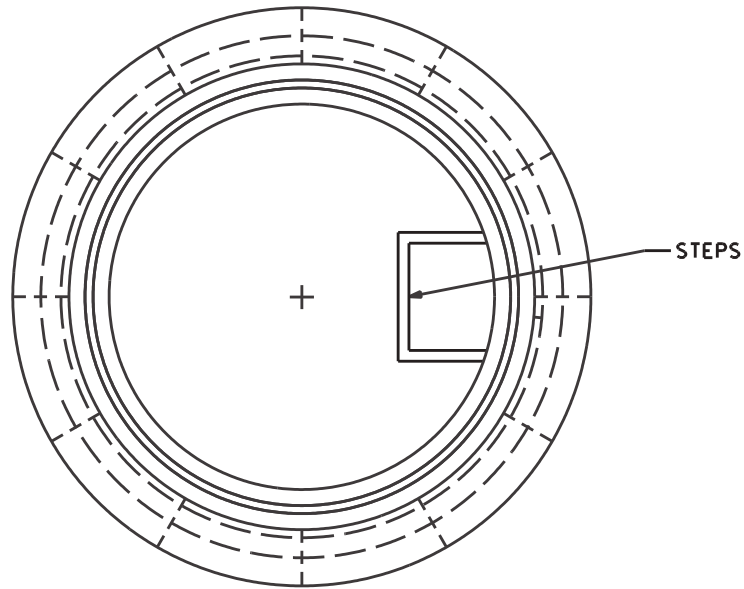
SCALE: NTS

PH\* 1-800-737-0707

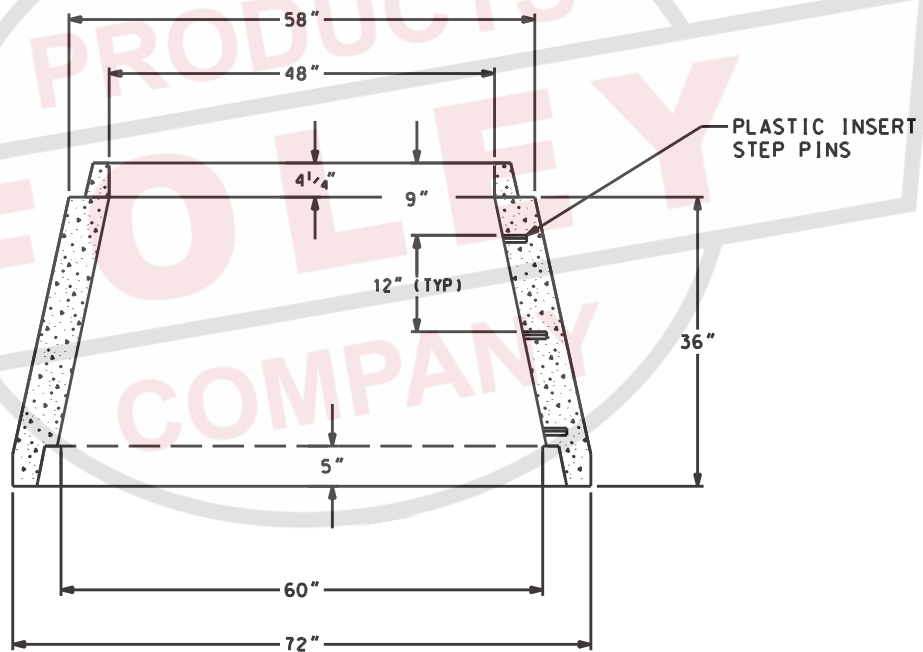
DWG# RS-423

DATE: 09/12/08

SHEET# 1 OF 1



PLAN VIEW



ELEVATION VIEW

**GENERAL NOTES:**

1. ALL MATERIAL, DESIGN, MANUFACTURE, PHYSICAL TEST REQUIREMENTS, FINISH MARKING, INSPECTION, REJECTION AND REPAIRS TO MEET "SPECIFICATIONS FOR PRECAST-REINFORCED CONCRETE MANHOLE SECTIONS", PER ASTM C-478 (LATEST REVISION).
2. CONCRETE STRENGTH PER ASTM C-478.
3. VERTICAL MANHOLE STEPS SHALL BE CONSISTENTLY SPACED AND SHALL COMPLY WITH OSHA (SUBPART D) "FIXED LADDERS" (SECTION 1910-27) AND/OR ASTM C-478



HERMITAGE, TN LENOIR CITY, TN  
FRANKLIN, TN CHATANOOGA, TN

60" (1524mm) TO 48" (1200mm) REDUCER  
MANHOLE CONCENTRIC CONE

SCALE: NTS

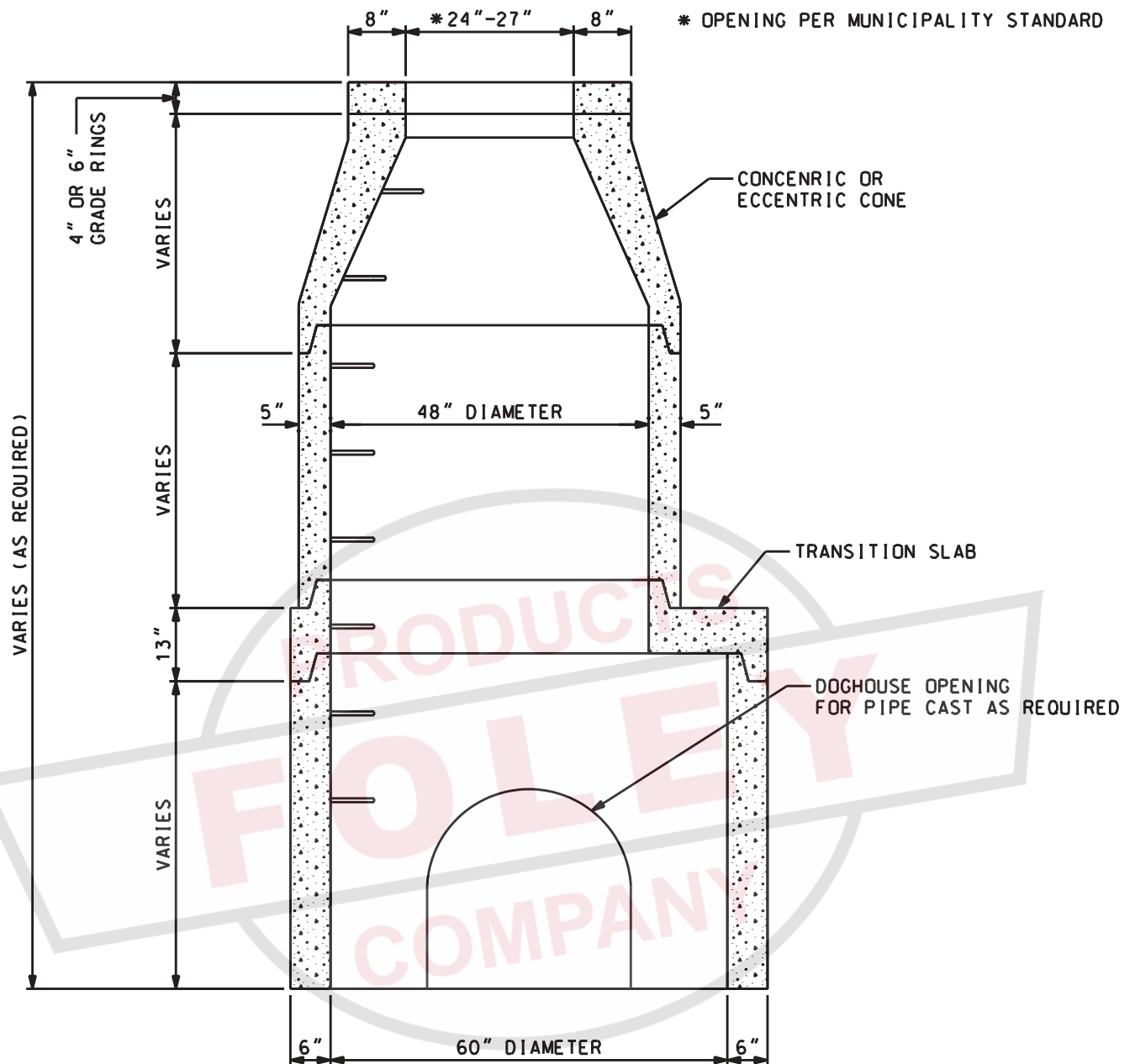
PH# 1-800-737-0707

DWG# RS-423-1

DATE: 09/12/08

SHEET# 1 OF 1





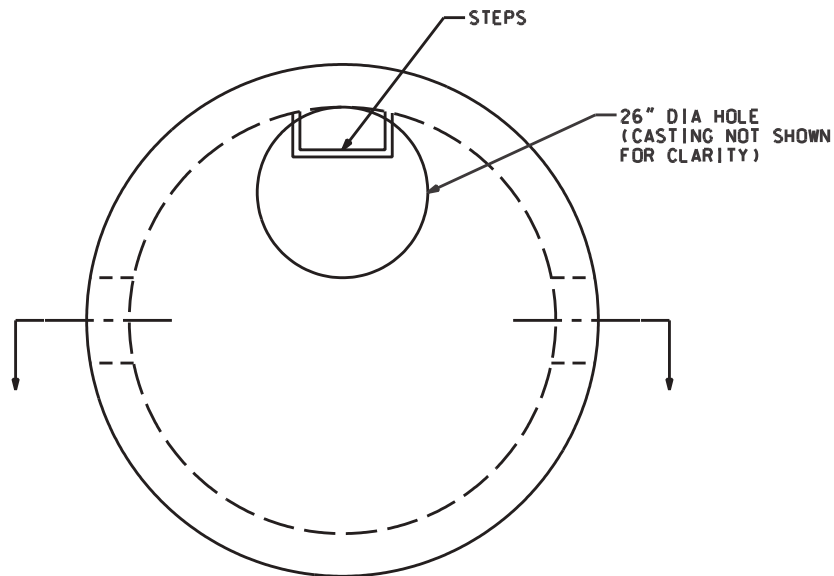
#### GENERAL NOTES:

1. ALL MATERIAL, DESIGN, MANUFACTURE, PHYSICAL TEST REQUIREMENTS, FINISH MARKING, INSPECTION, REJECTION AND REPAIRS TO MEET "SPECIFICATIONS FOR PRECAST-REINFORCED CONCRETE MANHOLE SECTIONS", PER ASTM C-478 (LATEST REVISION).
2. CONCRETE FLAT TOPS CAN BE USED WHERE CASTINGS ARE TO BE CAST FLUSH WITH THE TOP OF THE CONCRETE.

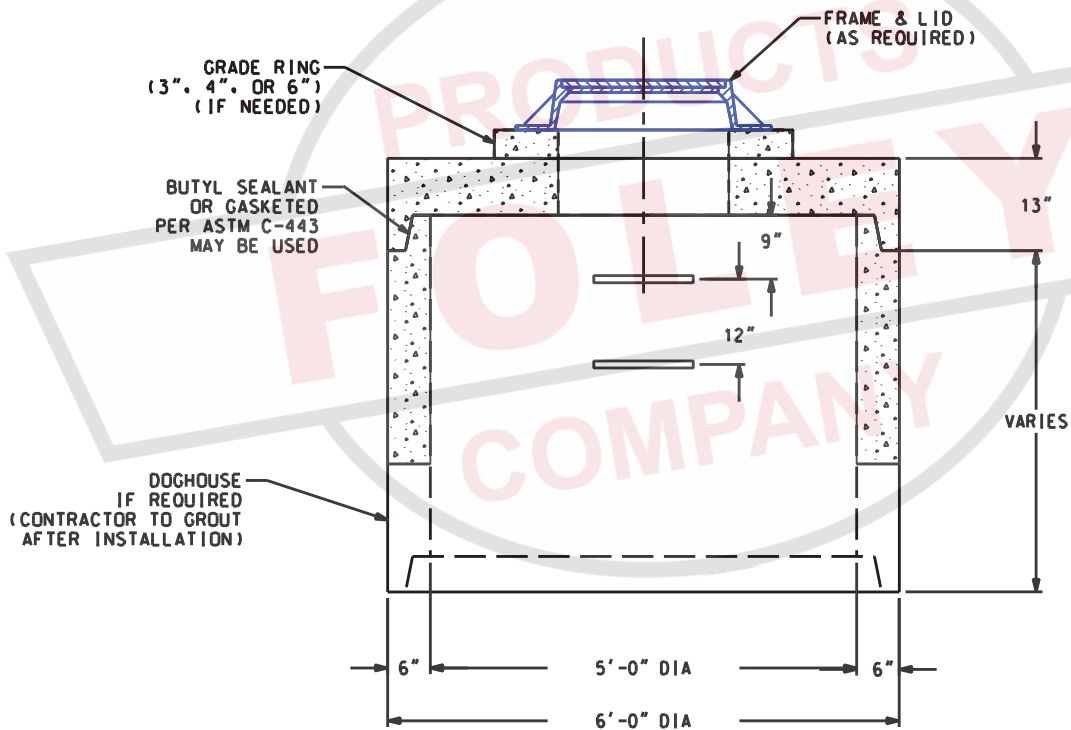


HERMITAGE, TN LENOIR CITY, TN  
FRANKLIN, TN CHATANOOGA, TN

REBAR NOT SHOWN  
FOR CLARITY



TOP VIEW



SECTION VIEW

**GENERAL NOTES:**

1. ALL MATERIAL, DESIGN, MANUFACTURE, PHYSICAL TEST REQUIREMENTS, FINISH MARKING, INSPECTION, REJECTION AND REPAIRS TO MEET "SPECIFICATIONS FOR PRECAST-REINFORCED CONCRETE MANHOLE SECTIONS", PER ASTM C-478 (LATEST REVISION).

WEIGHTS: RISER - 1,300 LBS. VERT. FT  
FLAT TOP - 13" HT = 2,527 LBS



HERMITAGE, TN LENOIR CITY, TN  
FRANKLIN, TN CHATANOOGA, TN

60" [1525mm] I.D. - OPEN BOTTOM MANHOLE

SCALE: NTS

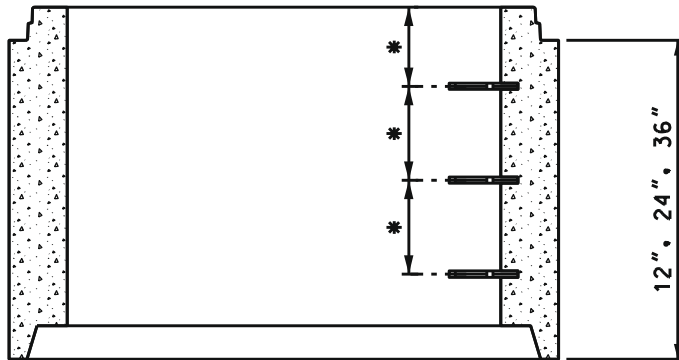
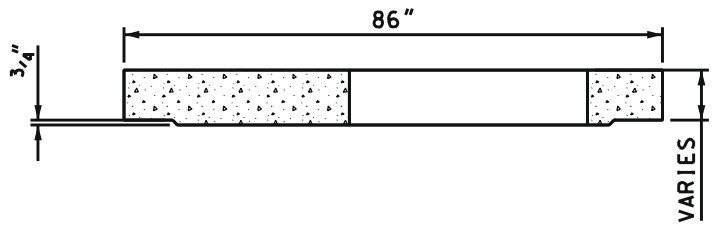
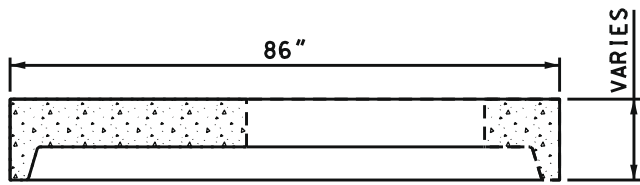
PH# 1-800-737-0707

DWG# RS-425-1

DATE: 09/12/08

SHEET# 1 OF 1

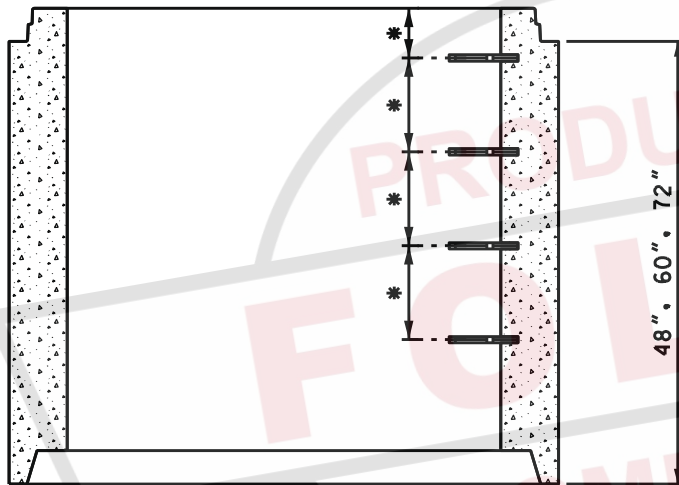




RISER

**RISER SECTION WEIGHTS**  
(CUSTOM HEIGHTS AVAILABLE)

12"	- 1,800 lbs.
24"	- 3,600 lbs.
36"	- 5,400 lbs.
48"	- 7,200 lbs.
60"	- 9,000 lbs.
72"	- 10,800 lbs.



RISER

**GENERAL NOTES:**

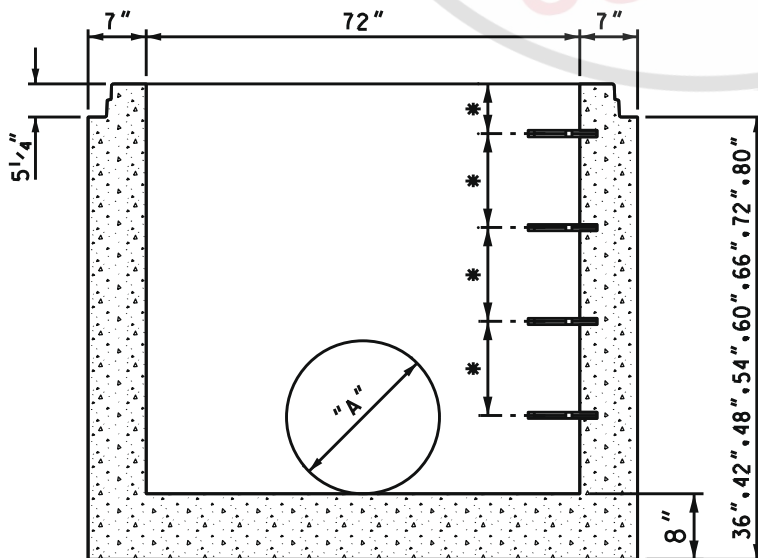
1. ALL MATERIAL, DESIGN, MANUFACTURE, PHYSICAL TEST REQUIREMENTS, FINISH MARKING, INSPECTION, REJECTION AND REPAIRS TO MEET "SPECIFICATIONS FOR PRECAST-REINFORCED CONCRETE MANHOLE SECTIONS", PER ASTM C-478 (LATEST REVISION).
2. CONCRETE STRENGTH PER ASTM C-478.
3. VERTICAL MANHOLE STEPS SHALL BE CONSISTENTLY SPACED AND SHALL COMPLY WITH OSHA (SUBPART D) "FIXED LADDERS" (SECTION 1910-27) AND/OR ASTM C-478.

\* CAN BE UTILIZED AS TDOT STANDARD:  
D-CB-12RB, 13RB, 28RB, 38RB, 41RB  
42RB, D-MH-2

**BASE SECTION MAX. WEIGHTS**

(CUSTOM HEIGHTS AVAILABLE)

36"	- 8,220 lbs.
42"	- 9,120 lbs.
48"	- 10,020 lbs.
54"	- 10,920 lbs.
60"	- 11,820 lbs.
66"	- 12,720 lbs.
72"	- 13,620 lbs.
80"	- 14,520 lbs.



MONO BASE SECTION

DIMENSION "A"  
AS REQUIRED



HERMITAGE, TN LENOIR CITY, TN  
FRANKLIN, TN CHATANOOGA, TN

72" [1800mm] I.D. PRECAST CONCRETE  
MANHOLE BASE & RISER SECTIONS

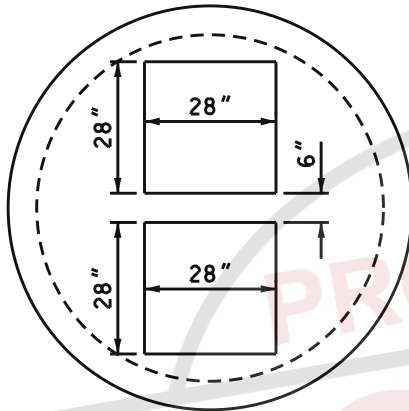
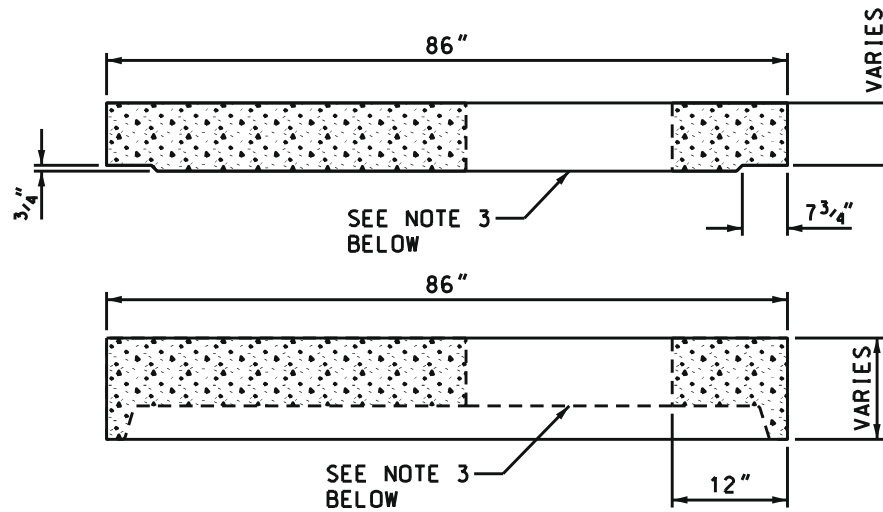
SCALE: NTS

PH# 1-800-737-0707

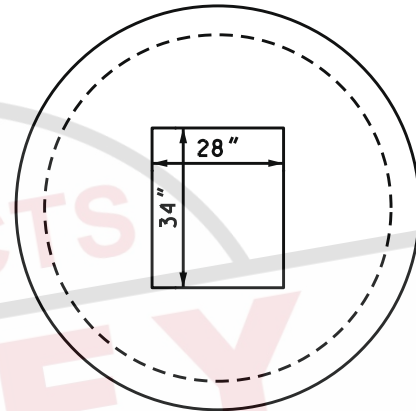
DWG# RS-426

DATE: 09/12/08

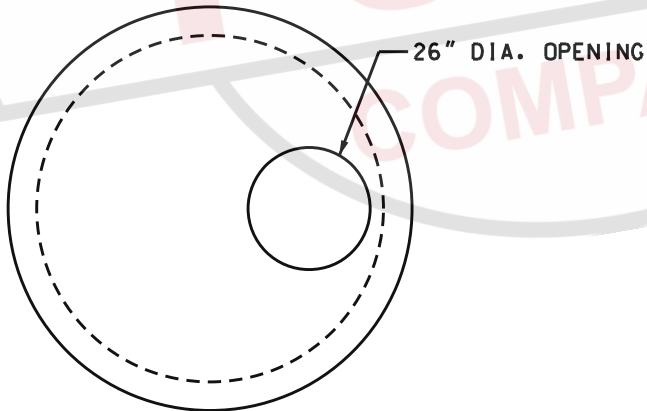
SHEET# 1 OF 1



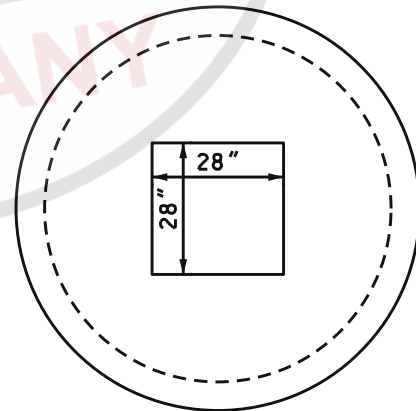
METRO DR110  
CATCH BASIN



TDOT TYPE 12  
CATCH BASIN



STANDARD MANHOLE FLAT TOP



METRO DR105  
CATCH BASIN

**GENERAL NOTES:**

1. ALL MATERIAL, DESIGN, MANUFACTURE, PHYSICAL TEST REQUIREMENTS, FINISH MARKING, INSPECTION, REJECTION AND REPAIRS TO MEET "SPECIFICATIONS FOR PRECAST-REINFORCED CONCRETE MANHOLE SECTIONS", PER ASTM C-478 (LATEST REVISION).
2. CONCRETE STRENGTH PER ASTM C-478. REINFORCING: GRADE 60
3. OTHER HOLE CONFIGURATIONS AVAILABLE.
- \* CAN BE UTILIZED AS TDOT STANDARD: D-CB-12RB, 13RB, 28RB, 38RB, 42RB



HERMITAGE, TN LENOIR CITY, TN  
FRANKLIN, TN CHATANOOGA, TN

72" [1800mm] DIAMETER FLAT TOP

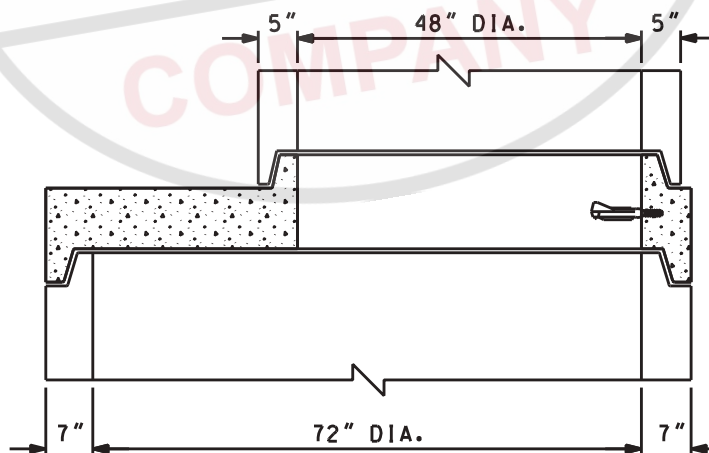
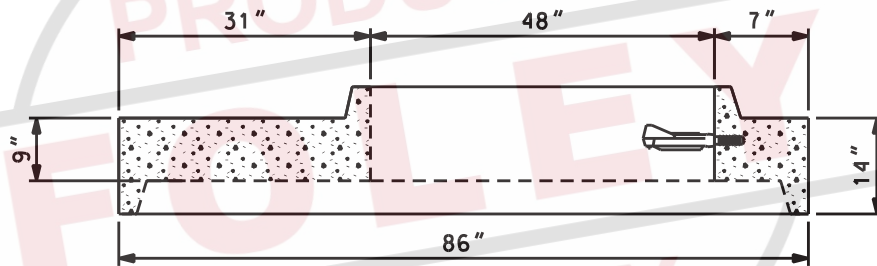
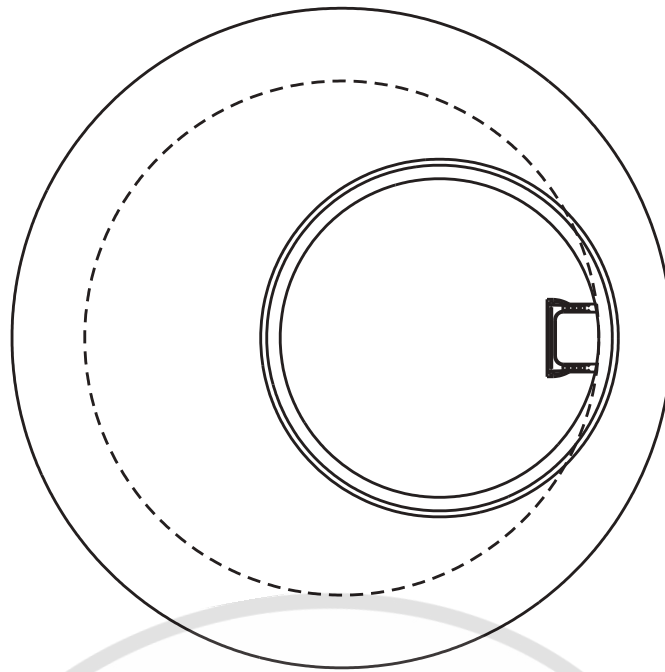
SCALE: NTS

PH• 1-800-737-0707

DWG# RS-428

DATE: 09/12/08

SHEET# 1 OF 1



72" DIA. TO 48" DIA. MANHOLE TRANSITION SECTION

**GENERAL NOTES:**

1. ALL MATERIAL, DESIGN, MANUFACTURE, PHYSICAL TEST REQUIREMENTS, FINISH MARKING, INSPECTION, REJECTION AND REPAIRS TO MEET "SPECIFICATIONS FOR PRECAST-REINFORCED CONCRETE MANHOLE SECTIONS", PER ASTM C-478 (LATEST REVISION).

2. CONCRETE STRENGTH PER ASTM C-478. REINFORCING: GRADE 60



HERMITAGE, TN LENOIR CITY, TN  
FRANKLIN, TN CHATANOOGA, TN

72" [1800mm] DIAMETER TO 48" [1200mm] DIAMETER  
MANHOLE TRANSITION

SCALE: NTS

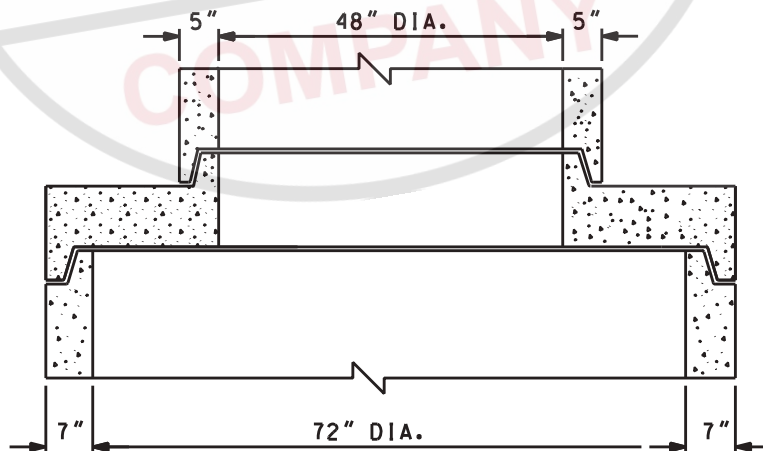
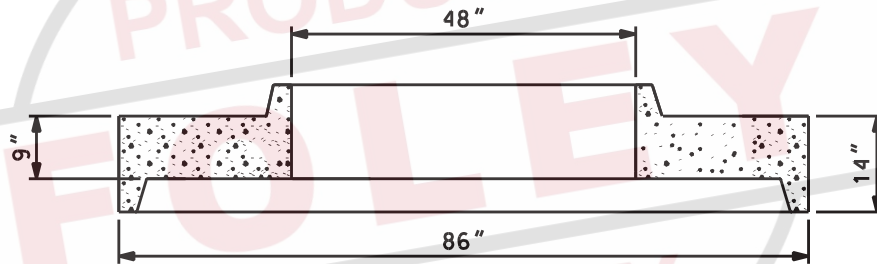
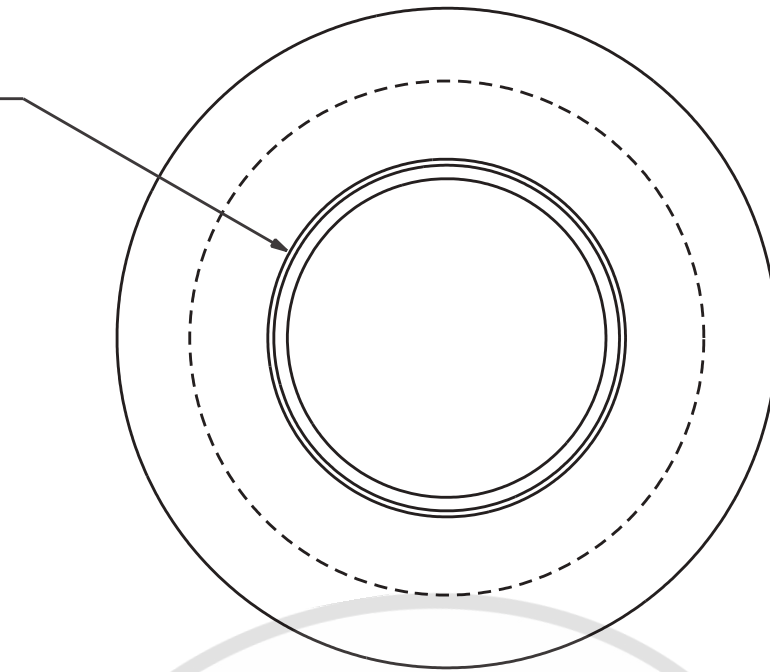
PH# 1-800-737-0707

DWG# RS-432

DATE: 09/12/08

SHEET# 1 OF 1

48" DIA.  
TRANSITION  
CENTERED



72" DIA. TO 48" DIA. MANHOLE TRANSITION SECTION

**GENERAL NOTES:**

1. ALL MATERIAL, DESIGN, MANUFACTURE, PHYSICAL TEST REQUIREMENTS, FINISH MARKING, INSPECTION, REJECTION AND REPAIRS TO MEET "SPECIFICATIONS FOR PRECAST-REINFORCED CONCRETE MANHOLE SECTIONS", PER ASTM C-478 (LATEST REVISION).

2. CONCRETE STRENGTH PER ASTM C-478. REINFORCING: GRADE 60



HERMITAGE, TN LENOIR CITY, TN  
FRANKLIN, TN CHATANOOGA, TN

72" [1800mm] DIAMETER TO 48" [1200mm] DIAMETER  
MANHOLE TRANSITION

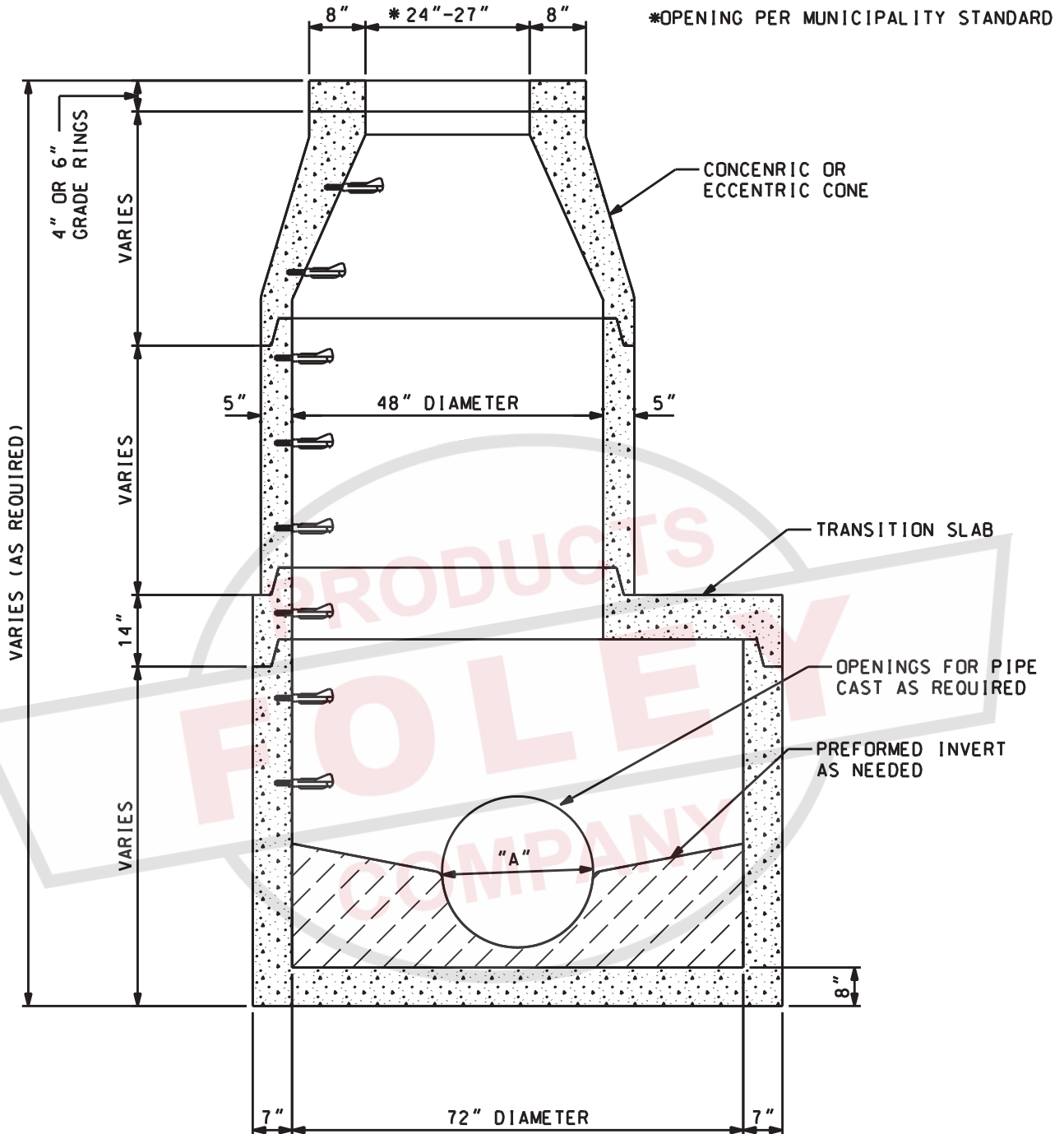
SCALE: NTS

PH# 1-800-737-0707

DWG# RS-432-1

DATE: 12/03/10

SHEET# 1 OF 1



# **GENERAL NOTES:**

1. ALL MATERIAL, DESIGN, MANUFACTURE, PHYSICAL TEST REQUIREMENTS, FINISH MARKING, INSPECTION, REJECTION AND REPAIRS TO MEET "SPECIFICATIONS FOR PRECAST-REINFORCED CONCRETE MANHOLE SECTIONS", PER ASTM C-478 (LATEST REVISION).
2. CONCRETE FLAT TOPS CAN BE USED WHERE CASTINGS ARE TO BE CAST FLUSH WITH THE TOP OF THE CONCRETE.



HERMITAGE, TN LENOIR CITY, TN  
FRANKLIN, TN CHATANOOGA, TN

PH# 1-800-737-0707

DWG# RS-434

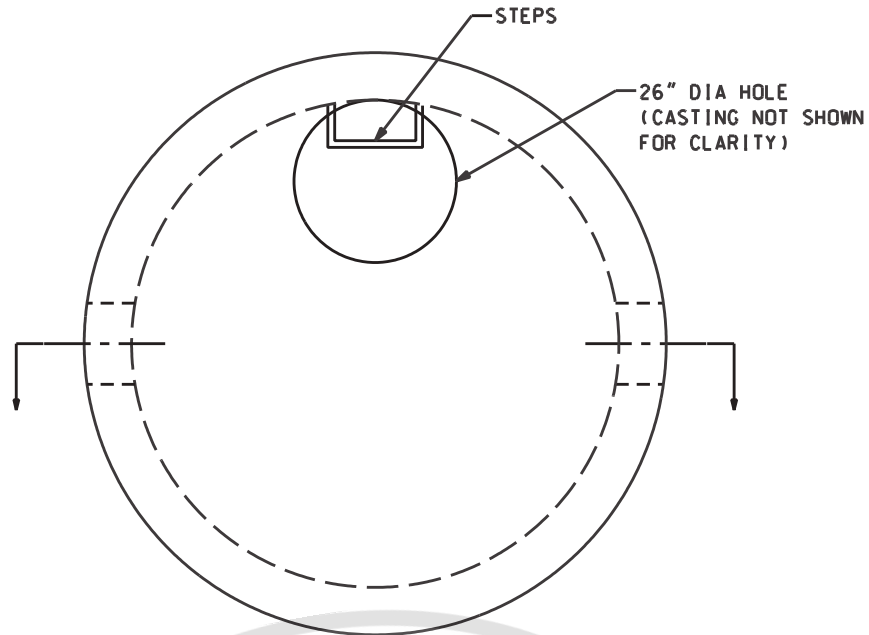
DATE: 09/12/08

SHEET# 1 OF 1

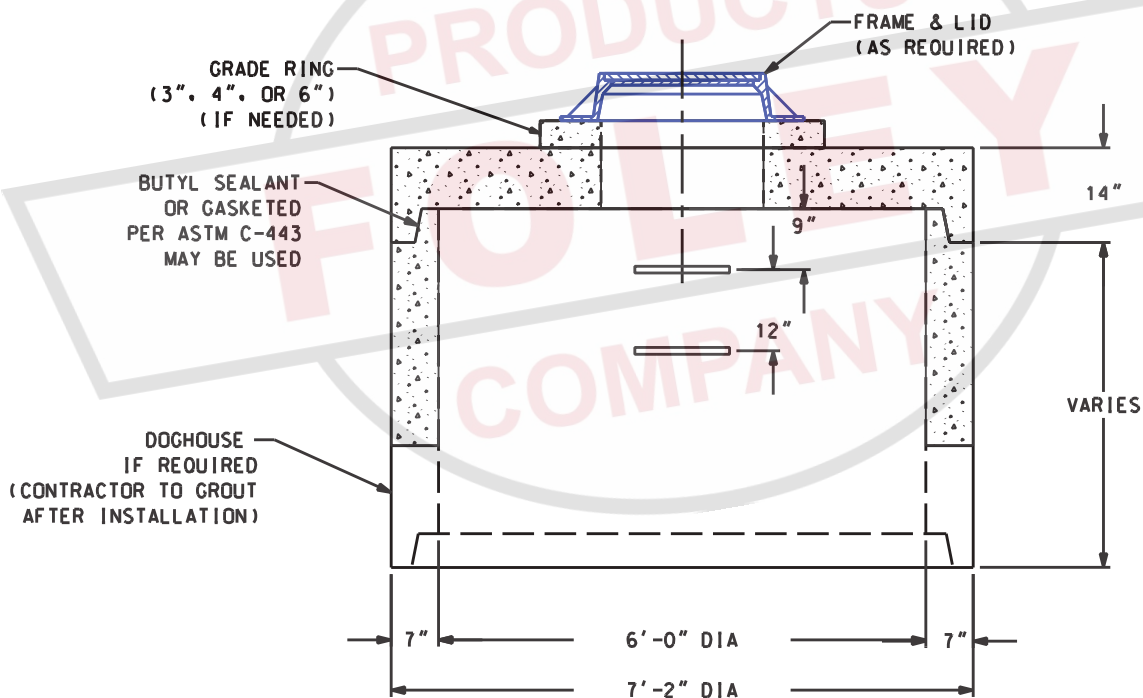
72" TO 48" TRANSITION PRECAST MANHOLE

SCALE: NTS

REBAR NOT SHOWN  
FOR CLARITY



TOP VIEW



SECTION VIEW

**GENERAL NOTES:**

1. ALL MATERIAL, DESIGN, MANUFACTURE, PHYSICAL TEST REQUIREMENTS, FINISH MARKING, INSPECTION, REJECTION AND REPAIRS TO MEET "SPECIFICATIONS FOR PRECAST-REINFORCED CONCRETE MANHOLE SECTIONS", PER ASTM C-478 (LATEST REVISION).

WEIGHTS: RISER - 1,800 LBS. VERT. FT  
FLAT TOP - 14" HT = 3,583 LBS



HERMITAGE, TN LENOIR CITY, TN  
FRANKLIN, TN CHATANOOGA, TN

72" [1828mm] I.D. - OPEN BOTTOM MANHOLE

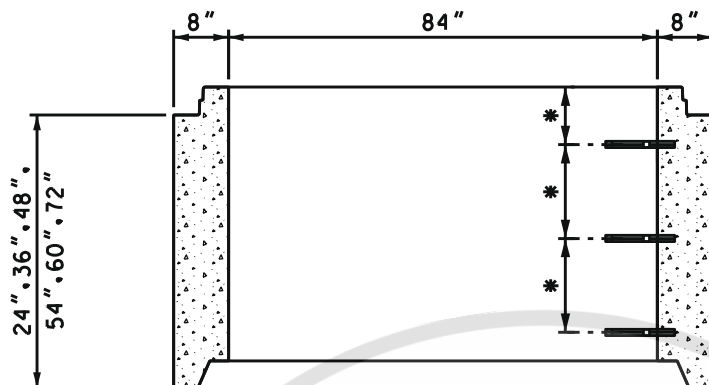
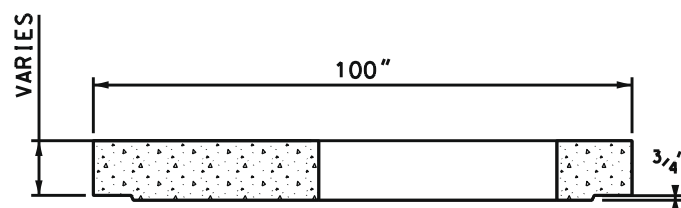
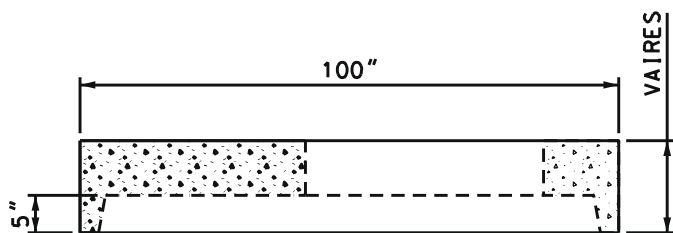
SCALE: NTS

PH\* 1-800-737-0707

DWG# RS-435-OB

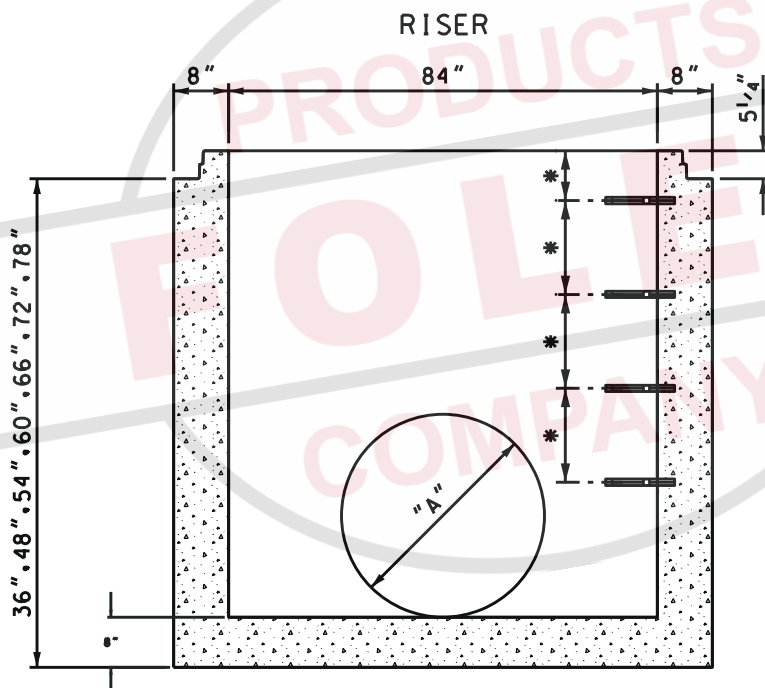
DATE: 09/12/08

SHEET# 1 OF 1



#### RISER SECTION WEIGHTS (CUSTOM HEIGHTS AVAILABLE)

24"	- 4.818 lbs.
36"	- 7.227 lbs.
48"	- 9.636 lbs.
54"	- 10.840 lbs.
60"	- 12.045 lbs.
72"	- 14.454 lbs.



#### BASE SECTION MAX. WEIGHTS (CUSTOM HEIGHTS AVAILABLE)

36"	- 11.145 lbs.
48"	- 13.530 lbs.
54"	- 15.120 lbs.
60"	- 16.710 lbs.
66"	- 17.515 lbs.
72"	- 18.320 lbs.
78"	- 19.520 lbs.

MONO BASE

#### GENERAL NOTES:

1. ALL MATERIAL, DESIGN, MANUFACTURE, PHYSICAL TEST REQUIREMENTS, FINISH MARKING, INSPECTION, REJECTION AND REPAIRS TO MEET "SPECIFICATIONS FOR PRECAST-REINFORCED CONCRETE MANHOLE SECTIONS", PER ASTM C-478 (LATEST REVISION).
2. CONCRETE STRENGTH PER ASTM C-478. REINFORCING: GRADE 60
3. VERTICAL MANHOLE STEPS SHALL BE CONSISTENTLY SPACED AND SHALL COMPLY WITH OSHA (SUBPART D) "FIXED LADDERS" (SECTION 1910-27) AND/OR ASTM C-478.
4. INVERTS NOT AVAILABLE

DIMENSION "A"  
AS REQUIRED



HERMITAGE, TN LENOIR CITY, TN  
FRANKLIN, TN CHATANOOGA, TN

84" [2100mm] I.D. PRECAST CONCRETE  
MANHOLE BASE & RISER SECTIONS

SCALE: NTS

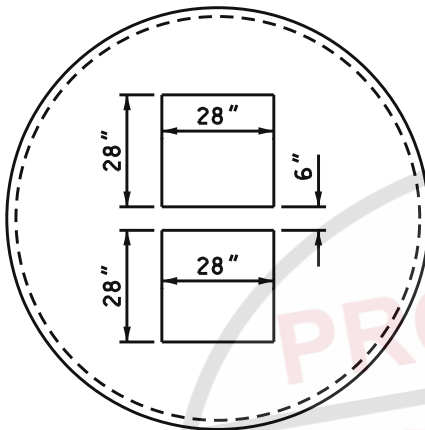
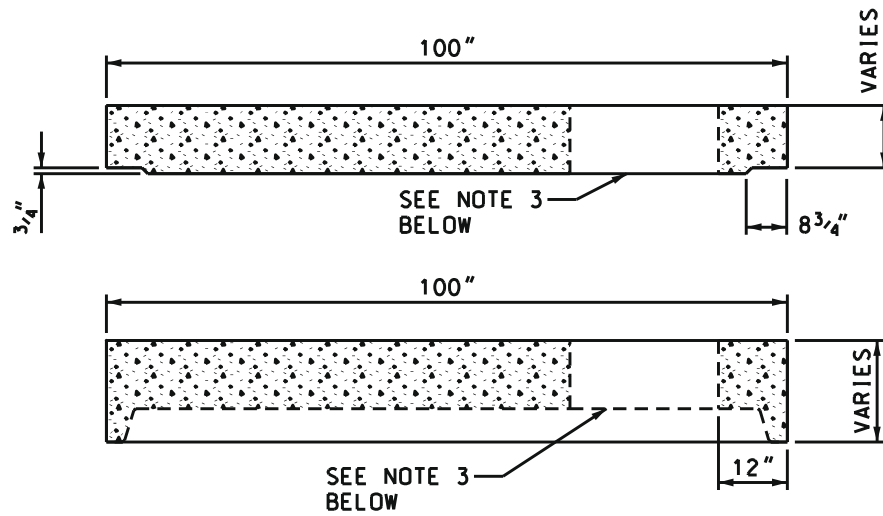
PH• 1-800-737-0707

DWG# RS-436

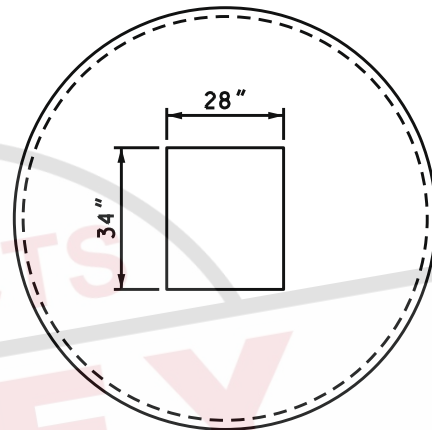
DATE: 09/12/08

SHEET# 1 OF 1

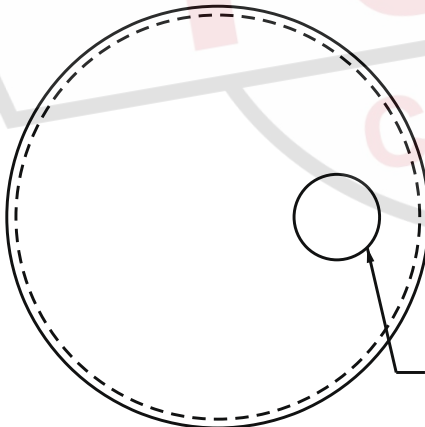




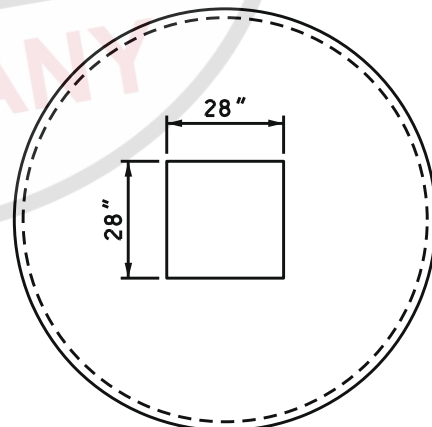
METRO DR110  
CATCH BASIN



TDOT TYPE 12  
CATCH BASIN



STANDARD MANHOLE FLAT TOP



METRO DR105  
CATCH BASIN

GENERAL NOTES:

1. ALL MATERIAL, DESIGN, MANUFACTURE, PHYSICAL TEST REQUIREMENTS, FINISH MARKING, INSPECTION, REJECTION AND REPAIRS TO MEET "SPECIFICATIONS FOR PRECAST-REINFORCED CONCRETE MANHOLE SECTIONS", PER ASTM C-478 (LATEST REVISION).

2. CONCRETE STRENGTH PER ASTM C-478. REINFORCING: GRADE 60

3. OTHER HOLE CONFIGURATIONS AVAILABLE.

\* CAN BE UTILIZED AS TDOT STANDARD: D-CB-12RC, 13RC, 28RB, 38RC, 39RB, 42RB



HERMITAGE, TN LENOIR CITY, TN  
FRANKLIN, TN CHATANOOGA, TN

84" [2100mm] DIAMETER FLAT TOP

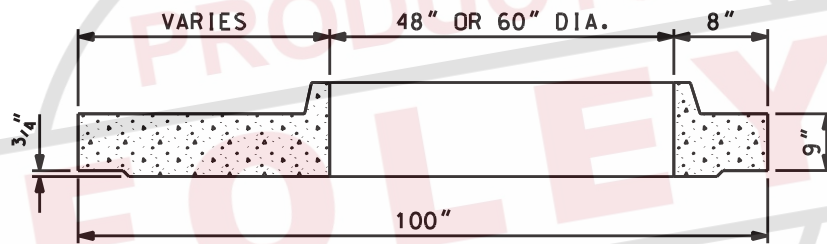
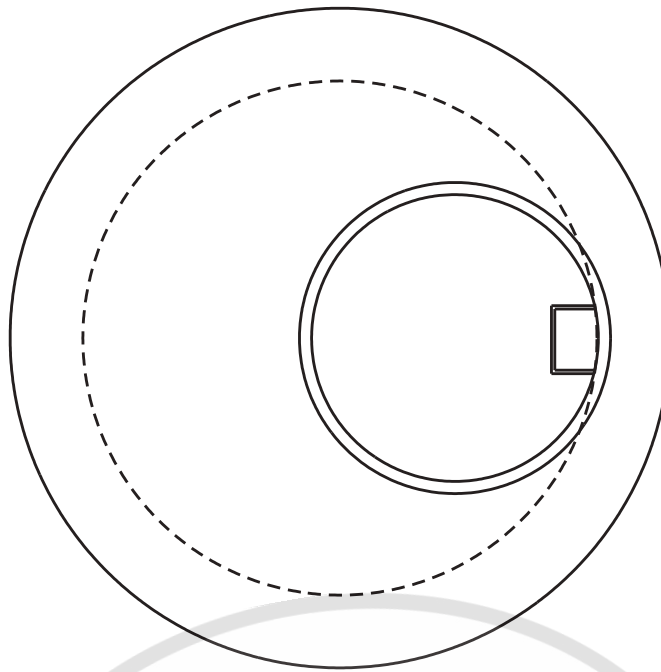
SCALE: NTS

PH• 1-800-737-0707

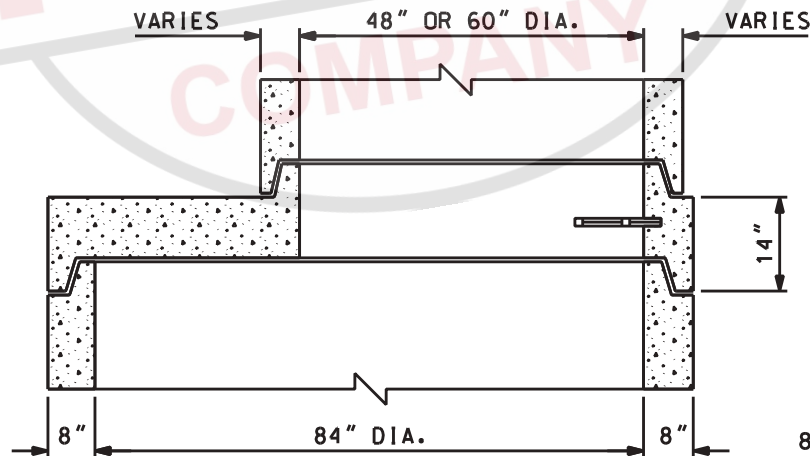
DWG# RS-438

DATE: 09/12/08

SHEET# 1 OF 1



FLAT  
TRANSITION



TONGUE  
TRANSITION

TRANSITION SECTION  
MAX. WEIGHTS

84" x 48" - 4.210 lbs.  
84" x 60" - 3.510 lbs.

84" DIA. TO 48" OR 60" DIA. MANHOLE TRANSITION SECTION

GENERAL NOTES:

1. ALL MATERIAL, DESIGN, MANUFACTURE, PHYSICAL TEST REQUIREMENTS, FINISH MARKING, INSPECTION, REJECTION AND REPAIRS TO MEET "SPECIFICATIONS FOR PRECAST-REINFORCED CONCRETE MANHOLE SECTIONS", PER ASTM C-478 (LATEST REVISION).

2. CONCRETE STRENGTH PER ASTM C-478. REINFORCING: GRADE 60



HERMITAGE, TN LENOIR CITY, TN  
FRANKLIN, TN CHATANOOGA, TN

84" [2100mm] DIAMETER TO 48" [1200mm] DIAMETER  
OR 60" [1500mm] DIAMETER MANHOLE TRANSITION

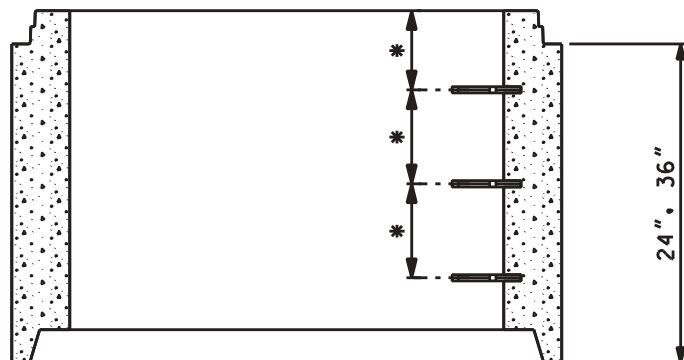
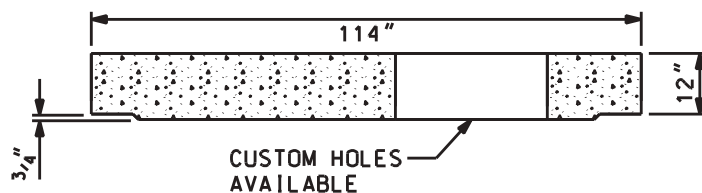
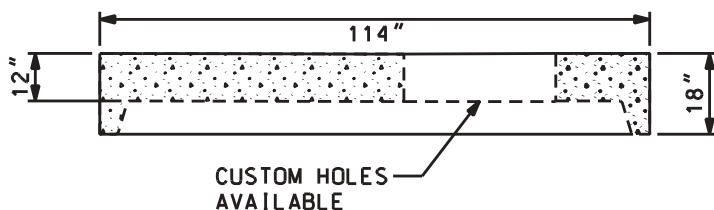
SCALE: NTS

PH\* 1-800-737-0707

DWG# RS-442

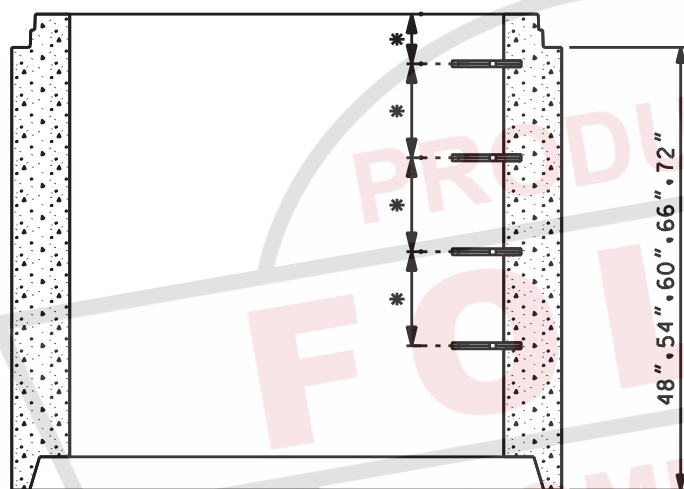
DATE: 09/12/08

SHEET# 1 OF 1



RISER

RISER SECTION WEIGHTS	
(CUSTOM HEIGHTS AVAILABLE)	
24"	6,200 lbs.
36"	9,300 lbs.
48"	12,400 lbs.
54"	13,950 lbs.
60"	15,500 lbs.
66"	17,050 lbs.
72"	18,600 lbs.

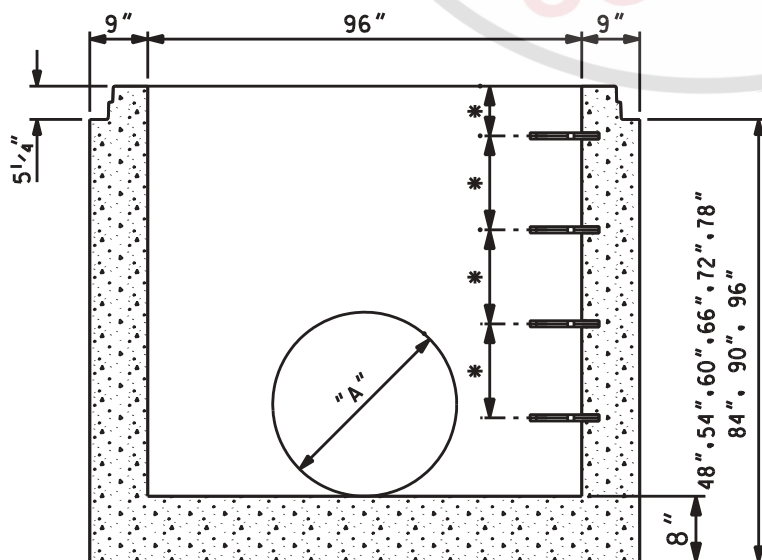


RISER

#### GENERAL NOTES:

1. ALL MATERIAL, DESIGN, MANUFACTURE, PHYSICAL TEST REQUIREMENTS, FINISH MARKING, INSPECTION, REJECTION AND REPAIRS TO MEET "SPECIFICATIONS FOR PRECAST-REINFORCED CONCRETE MANHOLE SECTIONS", PER ASTM C-478 (LATEST REVISION).
2. CONCRETE STRENGTH PER ASTM C-478.
3. VERTICAL MANHOLE STEPS SHALL BE CONSISTENTLY SPACED AND SHALL COMPLY WITH OSHA (SUBPART D) "FIXED LADDERS" (SECTION 1910-27) AND/OR ASTM C-478.
4. INVERTS NOT AVAILABLE

\* CAN BE UTILIZED AS TDOT STANDARD:  
D-CB-12RC, 13RC, 14RB, 25RB, 28RB,  
38RB, 39RB, 41RB, 42RB, 43R, D-MH-2



MONO BASE SECTION

DIMENSION "A"  
AS REQUIRED

BASE SECTION MAX. WEIGHTS	
(CUSTOM HEIGHTS AVAILABLE)	
48"	15,800 lbs.
54"	17,350 lbs.
60"	18,900 lbs.
66"	20,450 lbs.
72"	22,000 lbs.
78"	25,135 lbs.
84"	28,270 lbs.
90"	31,405 lbs.
96"	34,540 lbs.



HERMITAGE, TN LENOIR CITY, TN  
FRANKLIN, TN CHATANOOGA, TN

96" [2400mm] I.D. PRECAST MANHOLE  
BASE & RISER SECTIONS

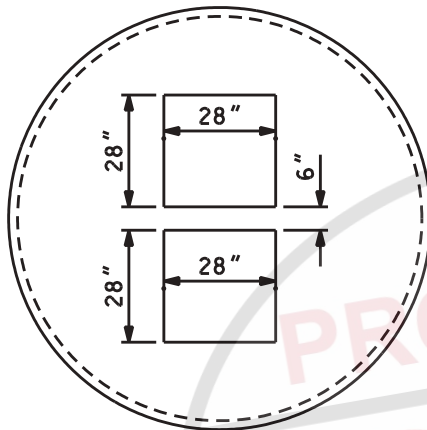
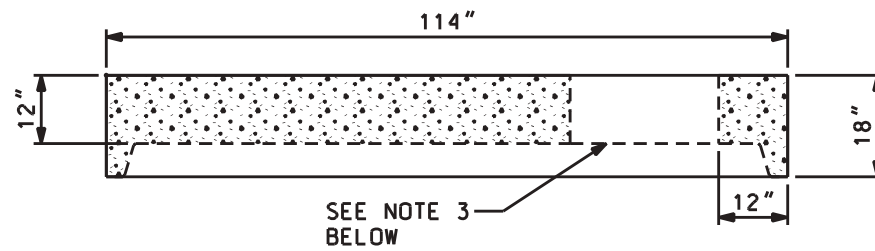
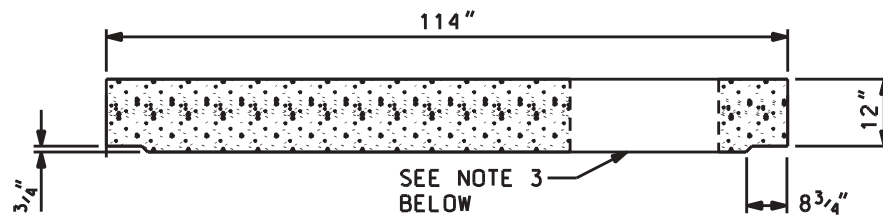
SCALE: NTS

PH\* 1-800-737-0707

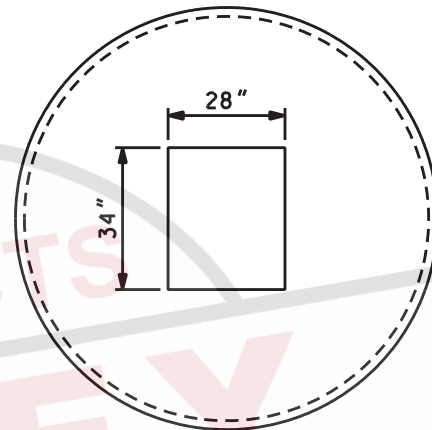
DWG# RS-444

DATE: 09/12/08

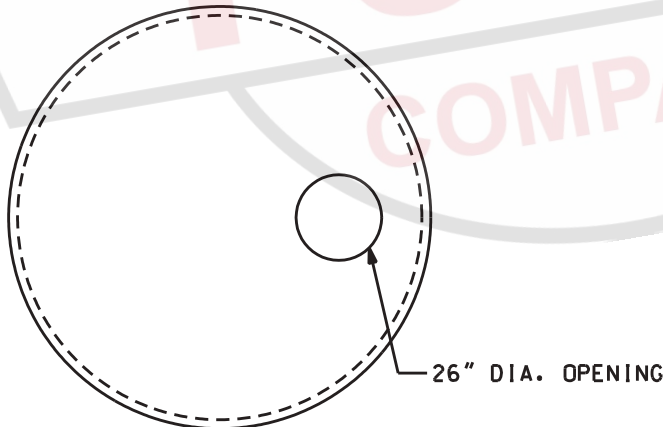
SHEET# 1 OF 1



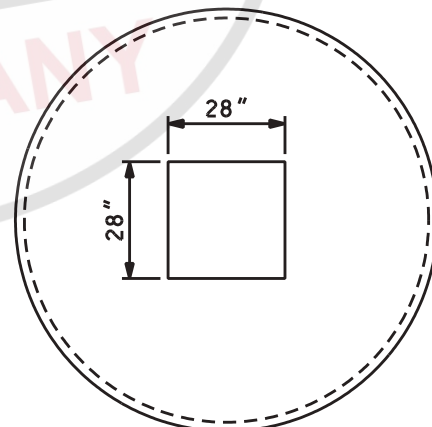
METRO DR110  
CATCH BASIN



TDOT TYPE 12  
CATCH BASIN



STANDARD MANHOLE FLAT TOP



METRO DR105  
CATCH BASIN

GENERAL NOTES:

1. ALL MATERIAL, DESIGN, MANUFACTURE, PHYSICAL TEST REQUIREMENTS, FINISH MARKING, INSPECTION, REJECTION AND REPAIRS TO MEET "SPECIFICATIONS FOR PRECAST-REINFORCED CONCRETE MANHOLE SECTIONS", PER ASTM C-478 (LATEST REVISION).
2. CONCRETE STRENGTH PER ASTM C-478. REINFORCING: GRADE 60
3. OTHER HOLE CONFIGURATIONS AVAILABLE.
- \* CAN BE UTILIZED AS TDOT STANDARD: D-CB-12RC, 13RC, 14RD, 25RB, 28RB, 38RB, 39RB, 42RB, 43R



HERMITAGE, TN LENOIR CITY, TN  
FRANKLIN, TN CHATANOOGA, TN

96" [2400mm] DIAMETER FLAT TOP

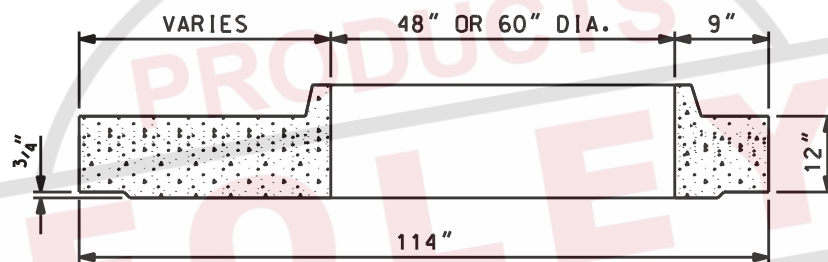
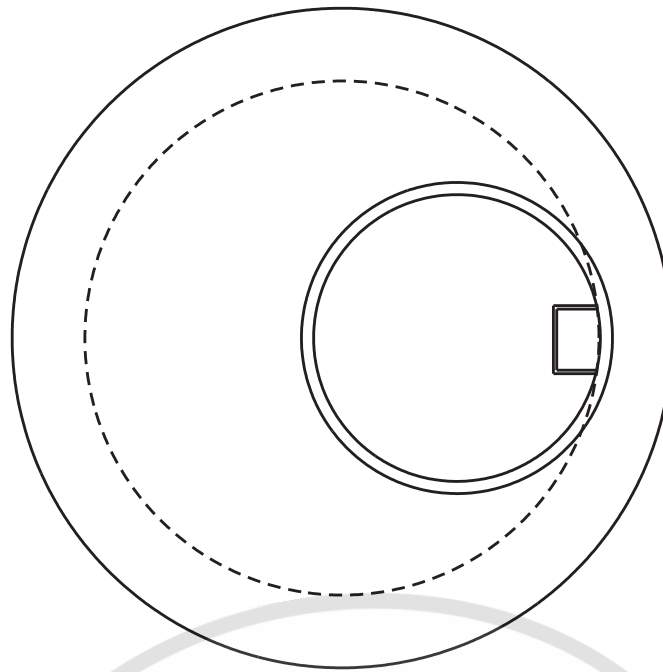
SCALE: NTS

PH\* 1-800-737-0707

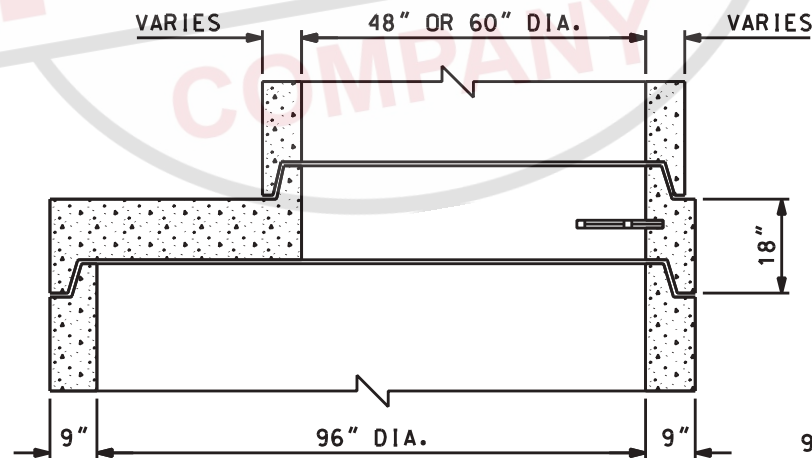
DWG# RS-446

DATE: 09/12/08

SHEET# 1 OF 1



FLAT  
TRANSITION



TONGUE  
TRANSITION

**TRANSITION SECTION  
MAX. WEIGHTS**

96"x48" - 7.431 lbs.  
96"x60" - 6.642 lbs.

**96" DIA. TO 48" OR 60" DIA. MANHOLE TRANSITION SECTION**

**GENERAL NOTES:**

1. ALL MATERIAL, DESIGN, MANUFACTURE, PHYSICAL TEST REQUIREMENTS, FINISH MARKING, INSPECTION, REJECTION AND REPAIRS TO MEET "SPECIFICATIONS FOR PRECAST-REINFORCED CONCRETE MANHOLE SECTIONS", PER ASTM C-478 (LATEST REVISION).

2. CONCRETE STRENGTH PER ASTM C-478. REINFORCING: GRADE 60



HERMITAGE, TN LENOIR CITY, TN  
FRANKLIN, TN CHATANOOGA, TN

96" [2400mm] DIAMETER TO 48" [1200mm] DIAMETER  
OR 60" [1500mm] DIAMETER MANHOLE TRANSITION

SCALE: NTS

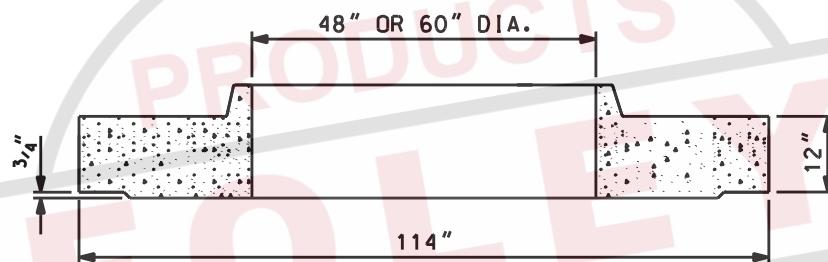
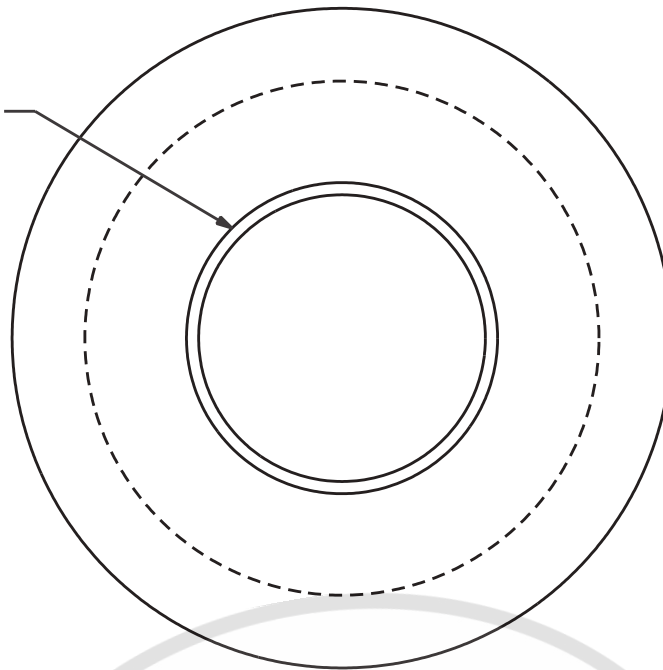
PH# 1-800-737-0707

DWG# RS-450

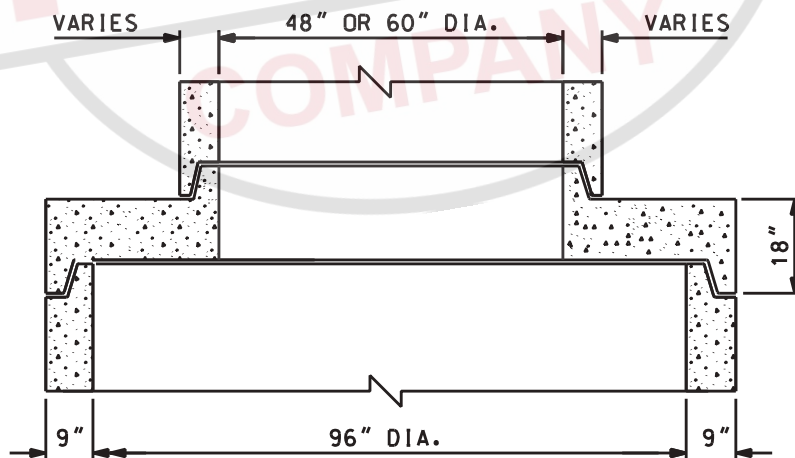
DATE: 09/12/08

SHEET# 1 OF 1

48" DIA. OR 60" DIA.  
TRANSITION  
(CENTERED)



FLAT  
TRANSITION



TONGUE  
TRANSITION

TRANSITION SECTION  
MAX. WEIGHTS

96"x48" - 7.431 lbs.  
96"x60" - 6.642 lbs.

96" DIA. TO 48" OR 60" DIA. MANHOLE TRANSITION SECTION

GENERAL NOTES:

1. ALL MATERIAL, DESIGN, MANUFACTURE, PHYSICAL TEST REQUIREMENTS, FINISH MARKING, INSPECTION, REJECTION AND REPAIRS TO MEET "SPECIFICATIONS FOR PRECAST-REINFORCED CONCRETE MANHOLE SECTIONS", PER ASTM C-478 (LATEST REVISION).

2. CONCRETE STRENGTH PER ASTM C-478. REINFORCING: GRADE 60



HERMITAGE, TN LENOIR CITY, TN  
FRANKLIN, TN CHATANOOGA, TN

96" [2400mm] DIAMETER TO 48" [1200mm] DIAMETER  
OR 60" [1500mm] DIAMETER MANHOLE TRANSITION

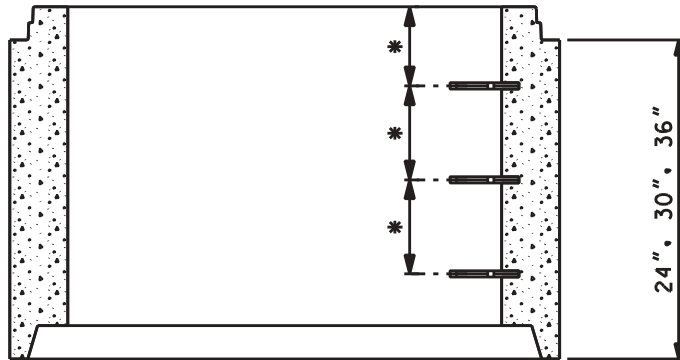
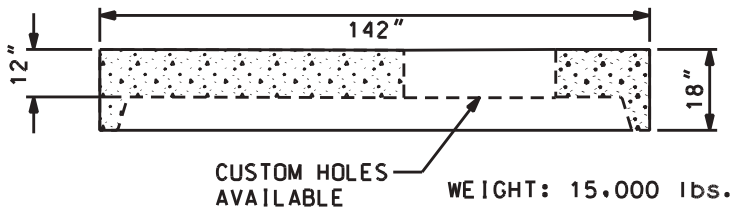
SCALE: NTS

PH\* 1-800-737-0707

DWG# RS-451

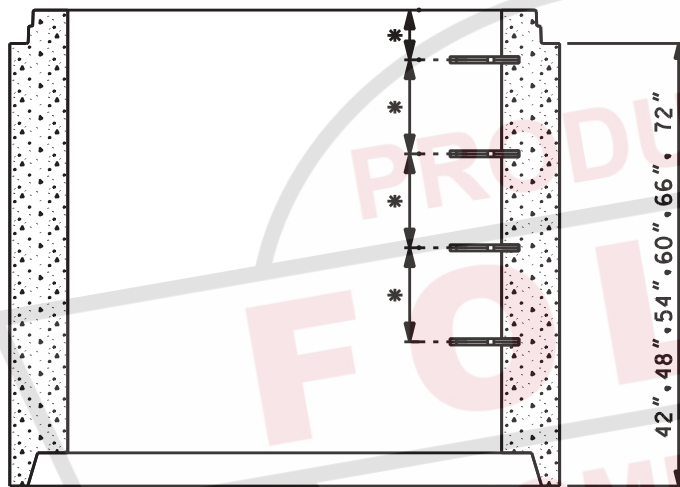
DATE: 12/03/10

SHEET# 1 OF 1



RISER

**RISER SECTION WEIGHTS**  
(CUSTOM HEIGHTS AVAILABLE)  
WEIGHT 4,368 lbs./VF



RISER

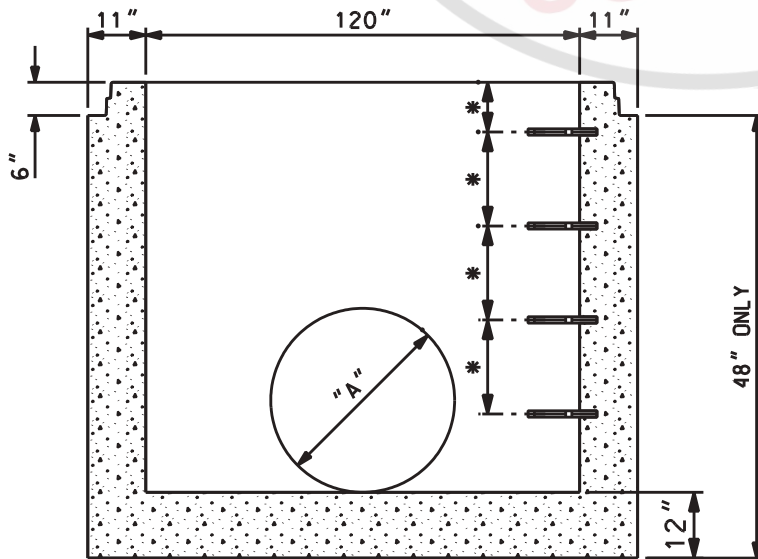
**GENERAL NOTES:**

1. ALL MATERIAL, DESIGN, MANUFACTURE, PHYSICAL TEST REQUIREMENTS, FINISH MARKING, INSPECTION, REJECTION AND REPAIRS TO MEET "SPECIFICATIONS FOR PRECAST-REINFORCED CONCRETE MANHOLE SECTIONS", PER ASTM C-478 (LATEST REVISION).
2. CONCRETE STRENGTH PER ASTM C-478.
3. VERTICAL MANHOLE STEPS SHALL BE CONSISTENTLY SPACED AND SHALL COMPLY WITH OSHA (SUBPART D) "FIXED LADDERS" (SECTION 1910-27) AND/OR ASTM C-478.
4. INVERTS NOT AVAILABLE

\* CAN BE UTILIZED AS TDOT STANDARD:  
D-CB-12RC, 13RC, D-MH-2

**BASE SECTION WEIGHT**

WEIGHT 29,253 LBS



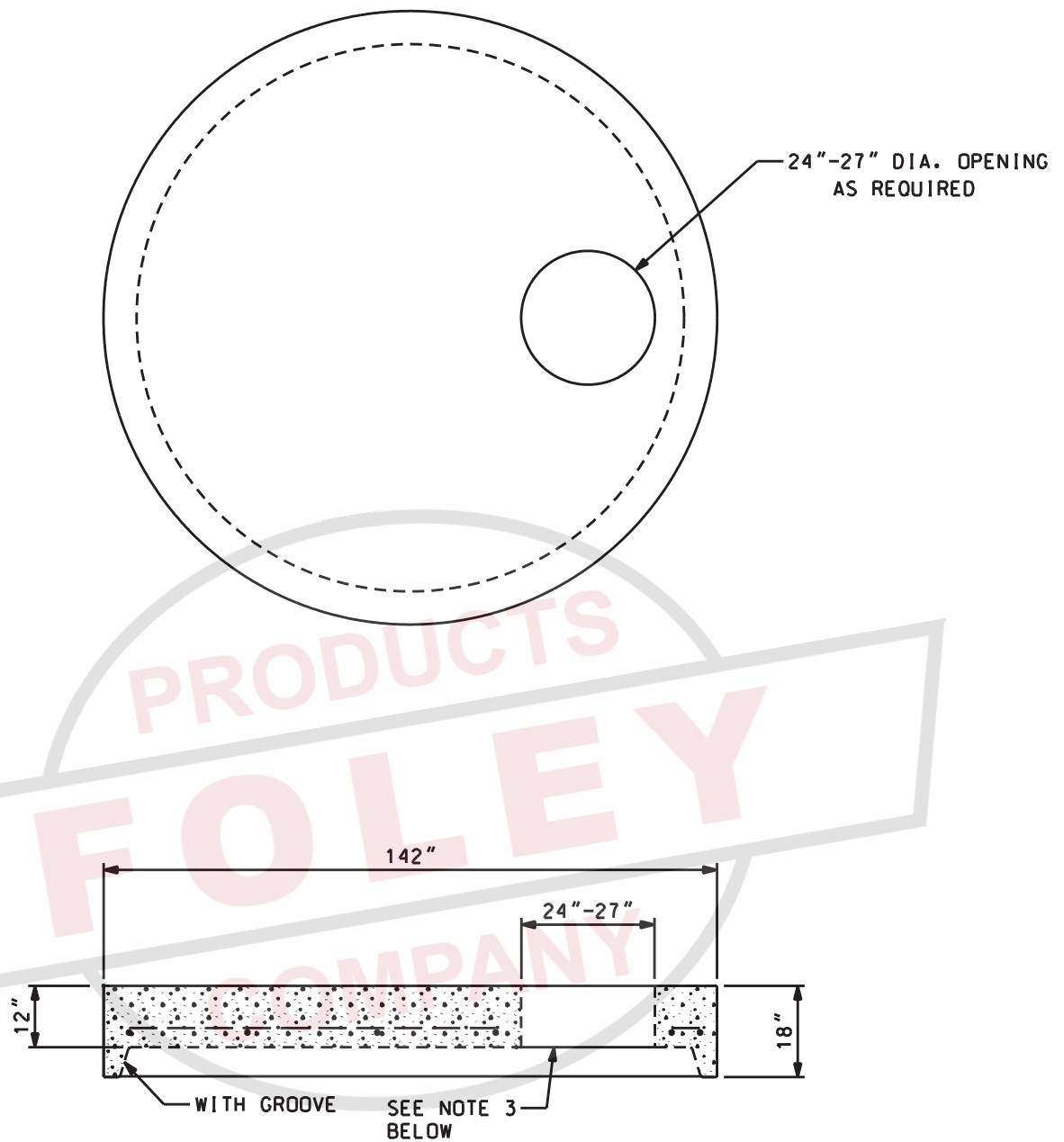
MONO BASE SECTION

DIMENSION "A"  
AS REQUIRED



HERMITAGE, TN LENOIR CITY, TN  
FRANKLIN, TN CHATANOOGA, TN





#### GENERAL NOTES:

1. ALL MATERIAL, DESIGN, MANUFACTURE, PHYSICAL TEST REQUIREMENTS, FINISH MARKING, INSPECTION, REJECTION AND REPAIRS TO MEET "SPECIFICATIONS FOR PRECAST-REINFORCED CONCRETE MANHOLE SECTIONS", PER ASTM C-478 (LATEST REVISION).
  2. CONCRETE STRENGTH PER ASTM C-478. REINFORCING: GRADE 60 (REINFORCED FOR HS20 LOADING - MINIMUM REBAR COVERAGE: 1½")
  3. OTHER HOLE CONFIGURATIONS AVAILABLE.
- \* CAN BE UTILIZED AS TDOT STANDARD: D-CB-12RC, 13RC
- WEIGHT: 15,564 lbs



HERMITAGE, TN LENOIR CITY, TN  
FRANKLIN, TN CHATANOOGA, TN

120" [3000mm] DIAMETER FLAT TOP

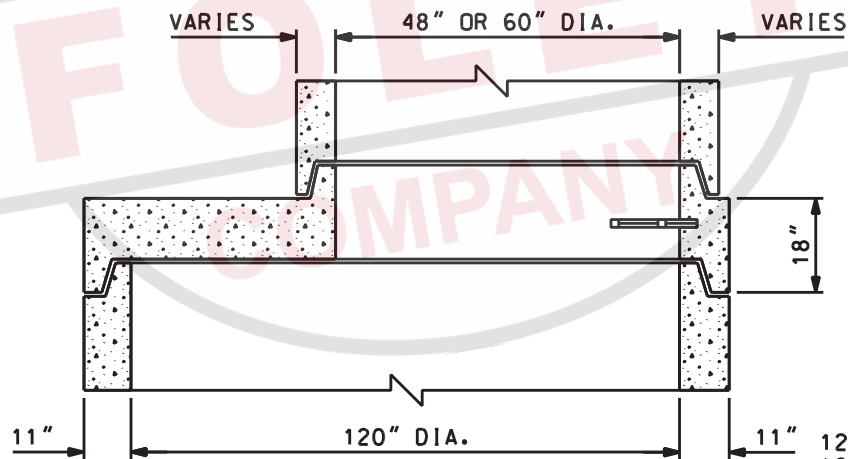
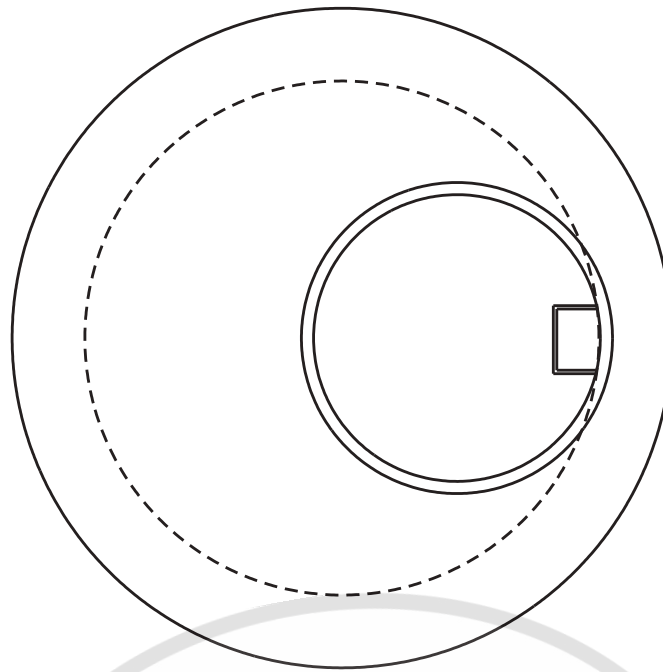
SCALE: NTS

PH\* 1-800-737-0707

DWG# RS-454

DATE: 09/12/08

SHEET# 1 OF 1



TONGUE  
TRANSITION

**TRANSITION SECTION  
MAX. WEIGHTS**

120"x48" - 14,126 lbs.  
120"x60" - 12,284 lbs.

**120" DIA. TO 48" OR 60" DIA. MANHOLE TRANSITION SECTION**

**GENERAL NOTES:**

1. ALL MATERIAL, DESIGN, MANUFACTURE, PHYSICAL TEST REQUIREMENTS, FINISH MARKING, INSPECTION, REJECTION AND REPAIRS TO MEET "SPECIFICATIONS FOR PRECAST-REINFORCED CONCRETE MANHOLE SECTIONS", PER ASTM C-478 (LATEST REVISION).

2. CONCRETE STRENGTH PER ASTM C-478. REINFORCING: GRADE 60



HERMITAGE, TN LENOIR CITY, TN  
FRANKLIN, TN CHATANOOGA, TN

120" [3000mm] DIAMETER TO 48" [1200mm] DIAMETER  
OR 60" [1500mm] DIAMETER MANHOLE TRANSITION

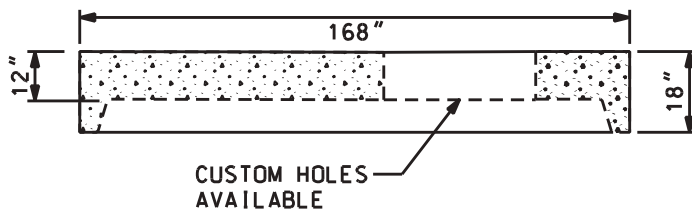
SCALE: NTS

PH\* 1-800-737-0707

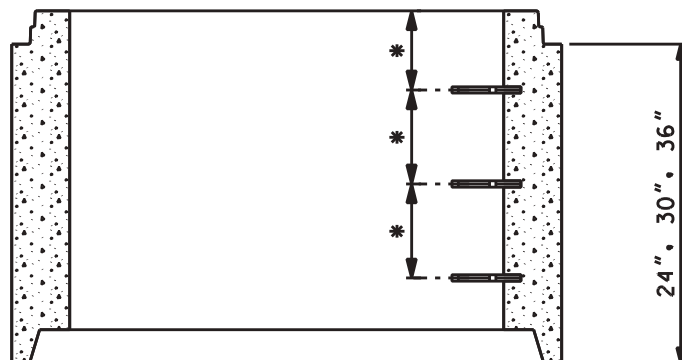
DWG# RS-456

DATE: 09/12/08

SHEET# 1 OF 1

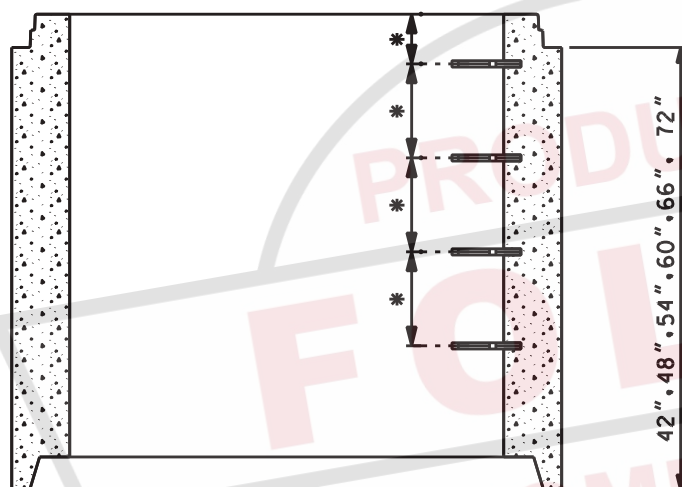


**FLAT TOP SECTION WEIGHT**  
WEIGHT: 18,600 lbs.



**RISER SECTION WEIGHTS**  
(CUSTOM HEIGHTS AVAILABLE)  
WEIGHT 6,126 lbs./VF

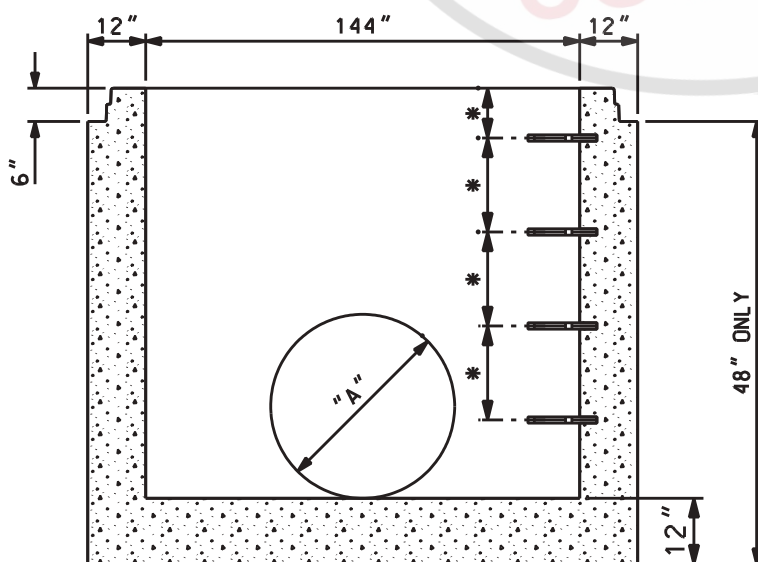
RISER



RISER

**GENERAL NOTES:**

1. ALL MATERIAL, DESIGN, MANUFACTURE, PHYSICAL TEST REQUIREMENTS, FINISH MARKING, INSPECTION, REJECTION AND REPAIRS TO MEET "SPECIFICATIONS FOR PRECAST-REINFORCED CONCRETE MANHOLE SECTIONS", PER ASTM C-478 (LATEST REVISION).
2. CONCRETE STRENGTH PER ASTM C-478.
3. VERTICAL MANHOLE STEPS SHALL BE CONSISTENTLY SPACED AND SHALL COMPLY WITH OSHA (SUBPART D) "FIXED LADDERS" (SECTION 1910-27) AND/OR ASTM C-478.
4. INVERTS NOT AVAILABLE



MONO BASE SECTION

DIMENSION "A"  
AS REQUIRED

**BASE SECTION WEIGHT**  
WEIGHT 41,468 LBS



HERMITAGE, TN LENOIR CITY, TN  
FRANKLIN, TN CHATANOOGA, TN

144" [3600mm] I.D. PRECAST MANHOLE  
BASE & RISER SECTIONS

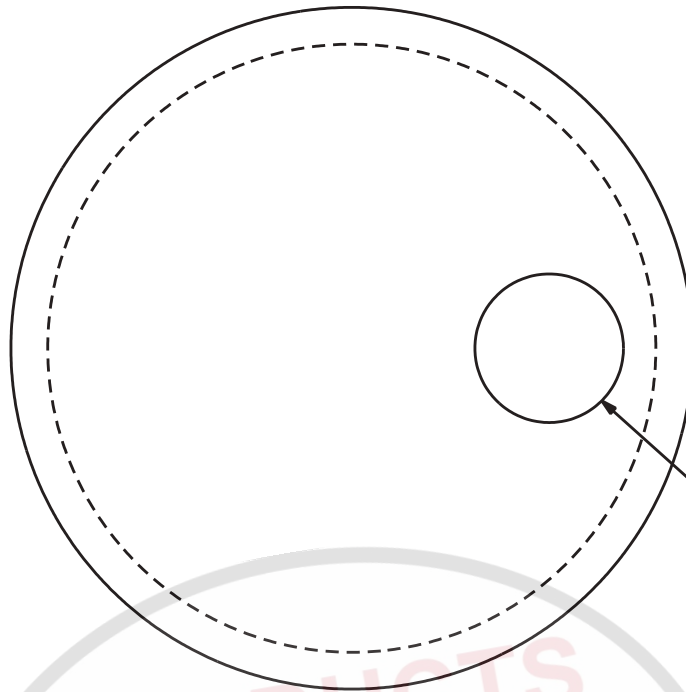
SCALE: NTS

PH# 1-800-737-0707

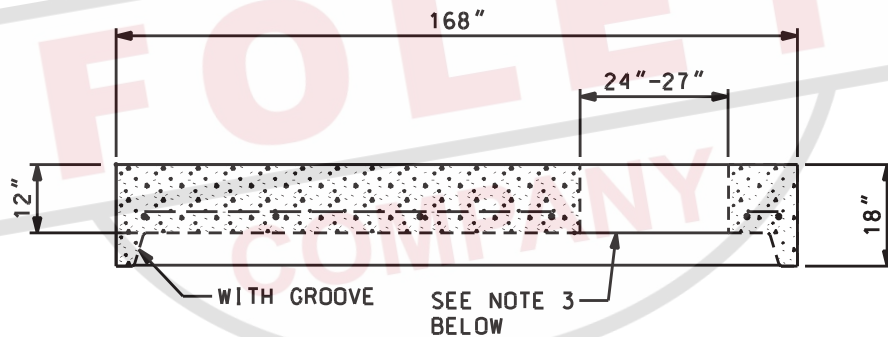
DWG# RS-458

DATE: 09/12/08

SHEET# 1 OF 1



AS REQUIRED  
24"-27" DIA. OPENING



#### GENERAL NOTES:

1. ALL MATERIAL, DESIGN, MANUFACTURE, PHYSICAL TEST REQUIREMENTS, FINISH MARKING, INSPECTION, REJECTION AND REPAIRS TO MEET "SPECIFICATIONS FOR PRECAST-REINFORCED CONCRETE MANHOLE SECTIONS", PER ASTM C-478 (LATEST REVISION).
2. CONCRETE STRENGTH PER ASTM C-478. REINFORCING: GRADE 60 (REINFORCED FOR HS20 LOADING - MINIMUM REBAR COVERAGE: 1½")
3. OTHER HOLE CONFIGURATIONS AVAILABLE.

WEIGHT: 15.564 lbs



HERMITAGE, TN LENOIR CITY, TN  
FRANKLIN, TN CHATANOOGA, TN

144" [3600mm] DIAMETER FLAT TOP

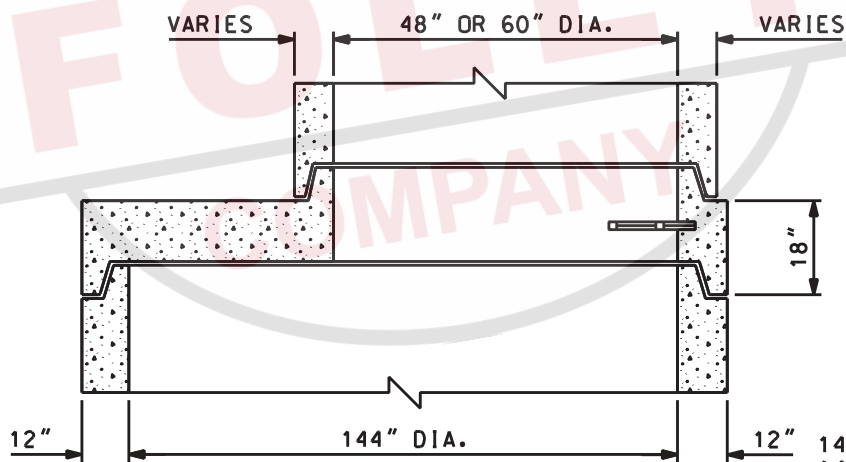
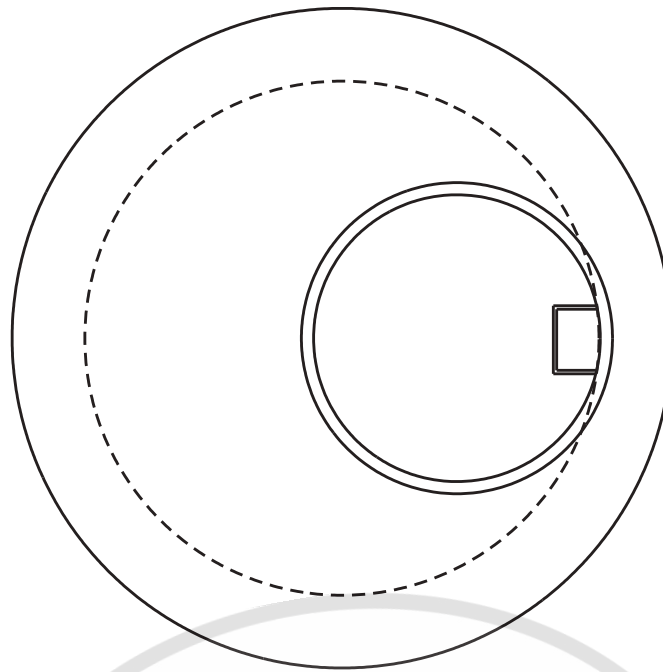
SCALE: NTS

PH• 1-800-737-0707

DWG# RS-460

DATE: 09/12/08

SHEET# 1 OF 1



TONGUE  
TRANSITION

TRANSITION SECTION  
MAX. WEIGHTS

144"x48" - 17,345 lbs.  
144"x60" - 17,345 lbs.

144" DIA. TO 48" OR 60" DIA. MANHOLE TRANSITION SECTION

### GENERAL NOTES:

1. ALL MATERIAL, DESIGN, MANUFACTURE, PHYSICAL TEST REQUIREMENTS, FINISH MARKING, INSPECTION, REJECTION AND REPAIRS TO MEET "SPECIFICATIONS FOR PRECAST-REINFORCED CONCRETE MANHOLE SECTIONS", PER ASTM C-478 (LATEST REVISION).

2. CONCRETE STRENGTH PER ASTM C-478. REINFORCING: GRADE 60



HERMITAGE, TN LENOIR CITY, TN  
FRANKLIN, TN CHATANOOGA, TN

144" [3600mm] DIAMETER TO 48" [1200mm] DIAMETER  
OR 60" [1500mm] DIAMETER MANHOLE TRANSITION

SCALE: NTS

PH\* 1-800-737-0707

DWG# RS-462

DATE: 09/12/08

SHEET# 1 OF 1