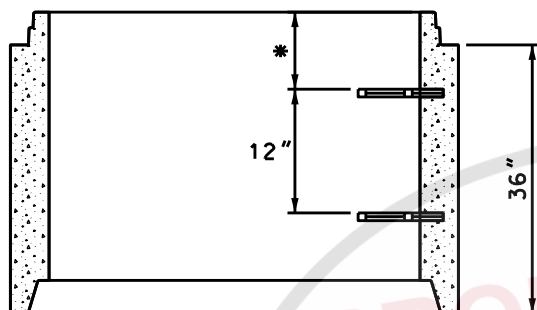
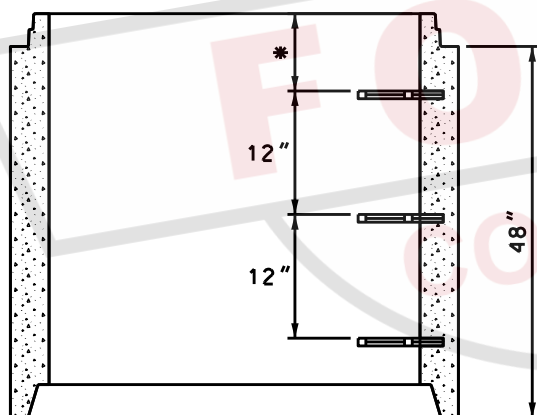


48"x12" RISER
WEIGHT 850 lbs.

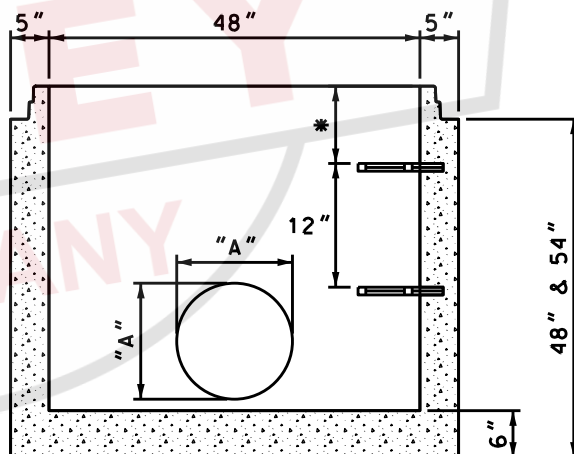
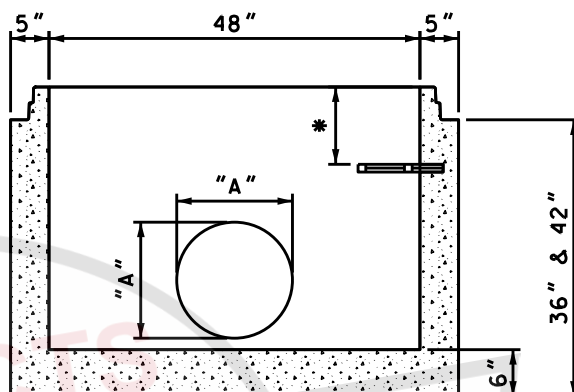
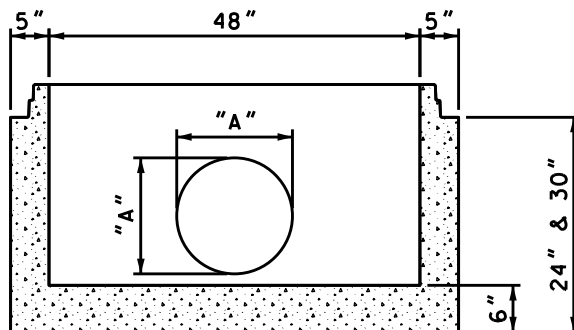
48"x24" RISER
WEIGHT 1,700 lbs.



48"x36" RISER
WEIGHT 2,550 lbs.



48"x48" RISER
WEIGHT 3,468 lbs.



BASE WEIGHTS

24"	- 2.802 lbs.
30"	- 3.250 lbs.
36"	- 3.820 lbs.
42"	- 4.115 lbs.
48"	- 4.685 lbs.
54"	- 4.978 lbs.

DIMENSION "A"
AS REQUIRED

GENERAL NOTES:

1. ALL MATERIAL, DESIGN, MANUFACTURE, PHYSICAL TEST REQUIREMENTS, FINISH MARKING, INSPECTION, REJECTION AND REPAIRS TO MEET "SPECIFICATIONS FOR PRECAST-REINFORCED CONCRETE MANHOLE SECTIONS", PER ASTM C-478 (LATEST REVISION).
2. CONCRETE STRENGTH PER ASTM C-478.
3. VERTICAL MANHOLE STEPS SHALL BE CONSISTENTLY SPACED AND SHALL COMPLY WITH OSHA (SUBPART D) "FIXED LADDERS" (SECTION 1910-27) AND/OR ASTM C-478.



48" [1200mm] I.D. - PRECAST CONCRETE
MONO BASE & RISER SECTIONS (HVUD)

SCALE: NTS

PH# 1-800-737-0707

DWG# RS-401H

DATE: 09/19/18

SHEET# 1 OF 1

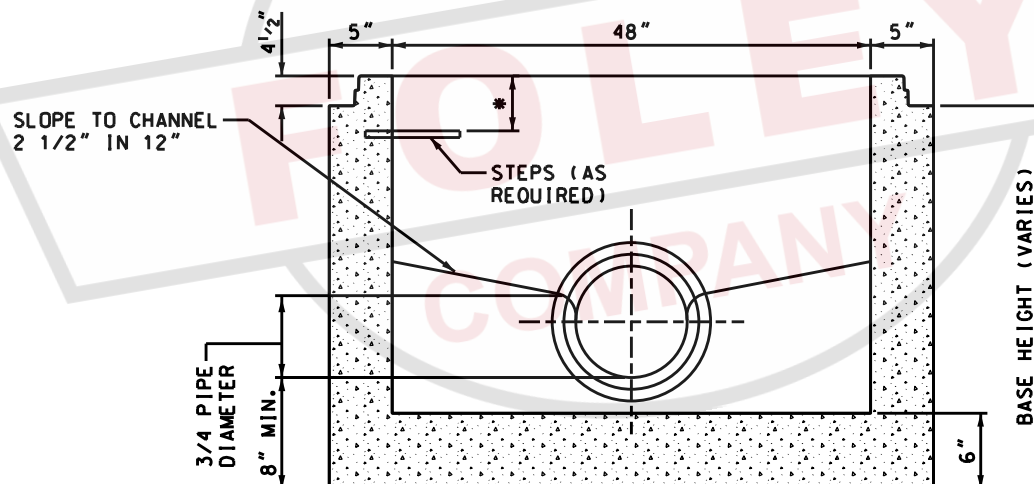
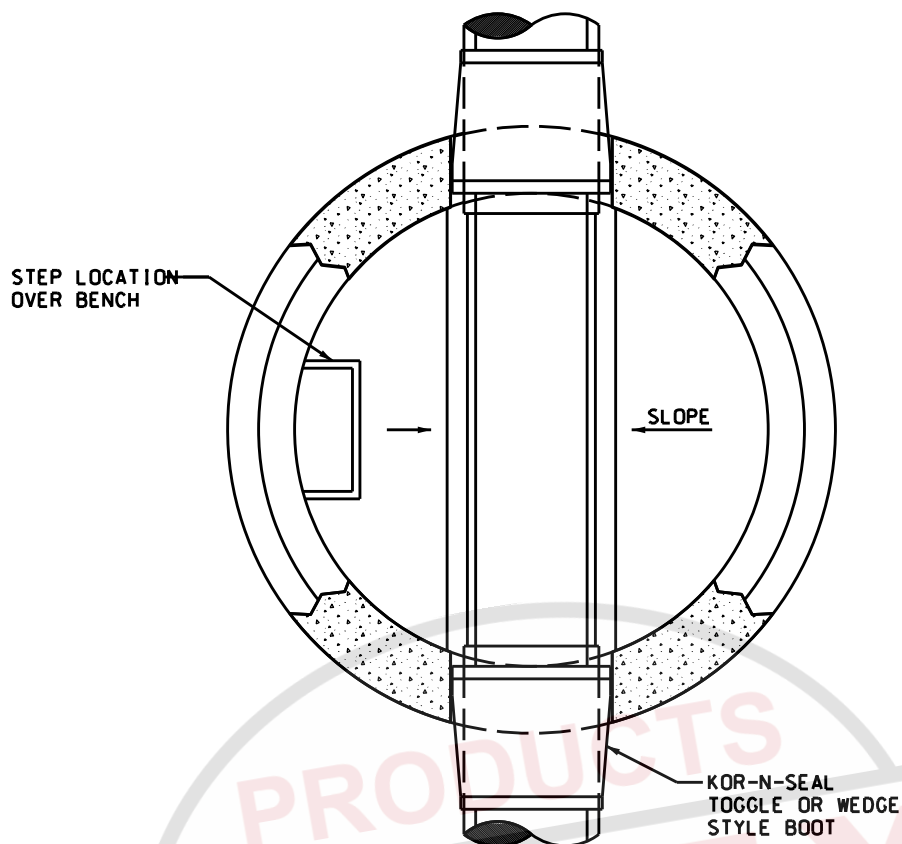


1. ALL MATERIAL, DESIGN, MANUFACTURE, PHYSICAL TEST REQUIREMENTS, FINISH MARKING, INSPECTION, REJECTION AND REPAIRS TO MEET "SPECIFICATIONS FOR PRECAST-REINFORCED CONCRETE MANHOLE SECTIONS", PER ASTM C-478 (LATEST REVISION).

3. VERTICAL MANHOLE STEPS SHALL BE CONSISTENTLY SPACED AND SHALL COMPLY WITH OSHA (SUBPART D) "FIXED LADDERS" (SECTION 1910-27) AND/OR ASTM C-478.



SHEET# 1 OF 1



SECTION VIEW

GENERAL NOTES:

1. ALL MATERIAL, DESIGN, MANUFACTURE, PHYSICAL TEST REQUIREMENTS, FINISH MARKING, INSPECTION, REJECTION AND REPAIRS TO MEET / OR EXCEED "SPECIFICATIONS FOR PRECAST-REINFORCED CONCRETE MANHOLE SECTIONS", PER ASTM C-478 (LATEST REVISION).
2. CONCRETE COVER ON REBAR: 2" (MIN.)
3. RESILIENT CONNECTORS MEET "SPECIFICATIONS FOR RESILIENT CONNECTORS BETWEEN REINFORCED CONCRETE MANHOLE STRUCTURES, PIPES AND LATERALS", PER ASTM C-923 (LATEST REVISION).
4. INVERT = SMOOTH CHANNEL, LIGHT BRUSH ON BENCH, & NO SHARP TURNS.



48" DIAMETER DEVELOPED BASE MANHOLE

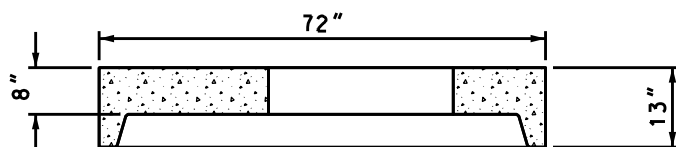
SCALE: NTS

PH# 1-800-737-0707

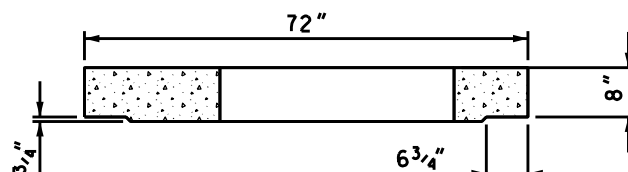
DWG# RS-412H

DATE: 09/19/18

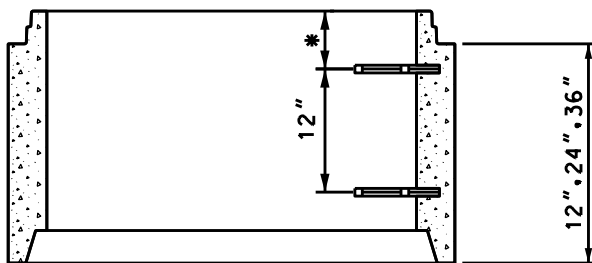
SHEET# 1 OF 1



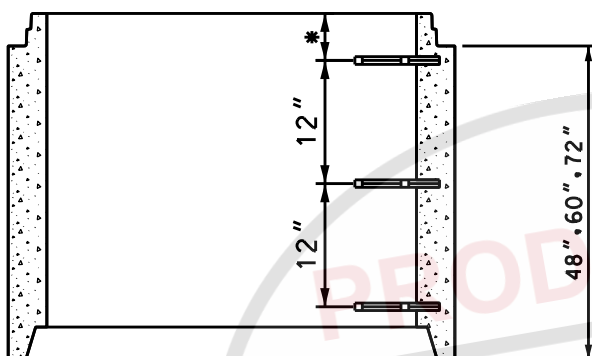
WEIGHT: 2,527 lbs.



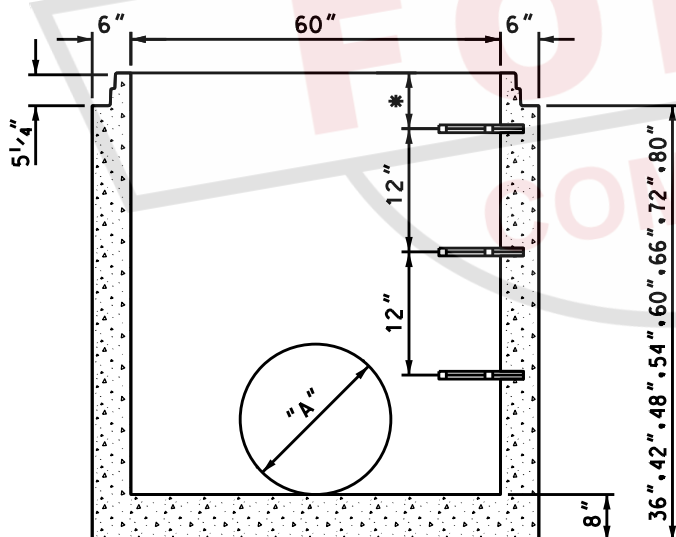
WEIGHT: 2,825 lbs.



RISER



RISER



MONO BASE SECTION

GENERAL NOTES:

1. ALL MATERIAL, DESIGN, MANUFACTURE, PHYSICAL TEST REQUIREMENTS, FINISH MARKING, INSPECTION, REJECTION AND REPAIRS TO MEET "SPECIFICATIONS FOR PRECAST-REINFORCED CONCRETE MANHOLE SECTIONS", PER ASTM C-478 (LATEST REVISION).
2. VERTICAL MANHOLE STEPS SHALL BE CONSISTENTLY SPACED AND SHALL COMPLY WITH OSHA (SUBPART D) "FIXED LADDERS" (SECTION 1910-27) AND/OR ASTM C-478.

RISER SECTION WEIGHTS (CUSTOM HEIGHTS AVAILABLE)

12"	- 1,300 lbs.
24"	- 2,600 lbs.
36"	- 3,900 lbs.
48"	- 5,200 lbs.
60"	- 6,500 lbs.
72"	- 7,800 lbs.

BASE SECTION MAX. WEIGHTS (CUSTOM HEIGHTS AVAILABLE)

36"	- 5,856 lbs.
42"	- 6,506 lbs.
48"	- 7,156 lbs.
54"	- 7,806 lbs.
60"	- 8,456 lbs.
66"	- 9,106 lbs.
72"	- 9,756 lbs.
80"	- 10,406 lbs.

DIMENSION "A"
AS REQUIRED

3. CONCRETE STRENGTH PER ASTM C-478.

* CAN BE UTILIZED AS TDOT STANDARD:
D-CB-12RB, 13RB, 25RB, 28RB, 38RB, 41RB
42RB, D-MH-2



60" [1500mm] I.D. PRECAST MANHOLE
BASE & RISER SECTIONS (HVUD)

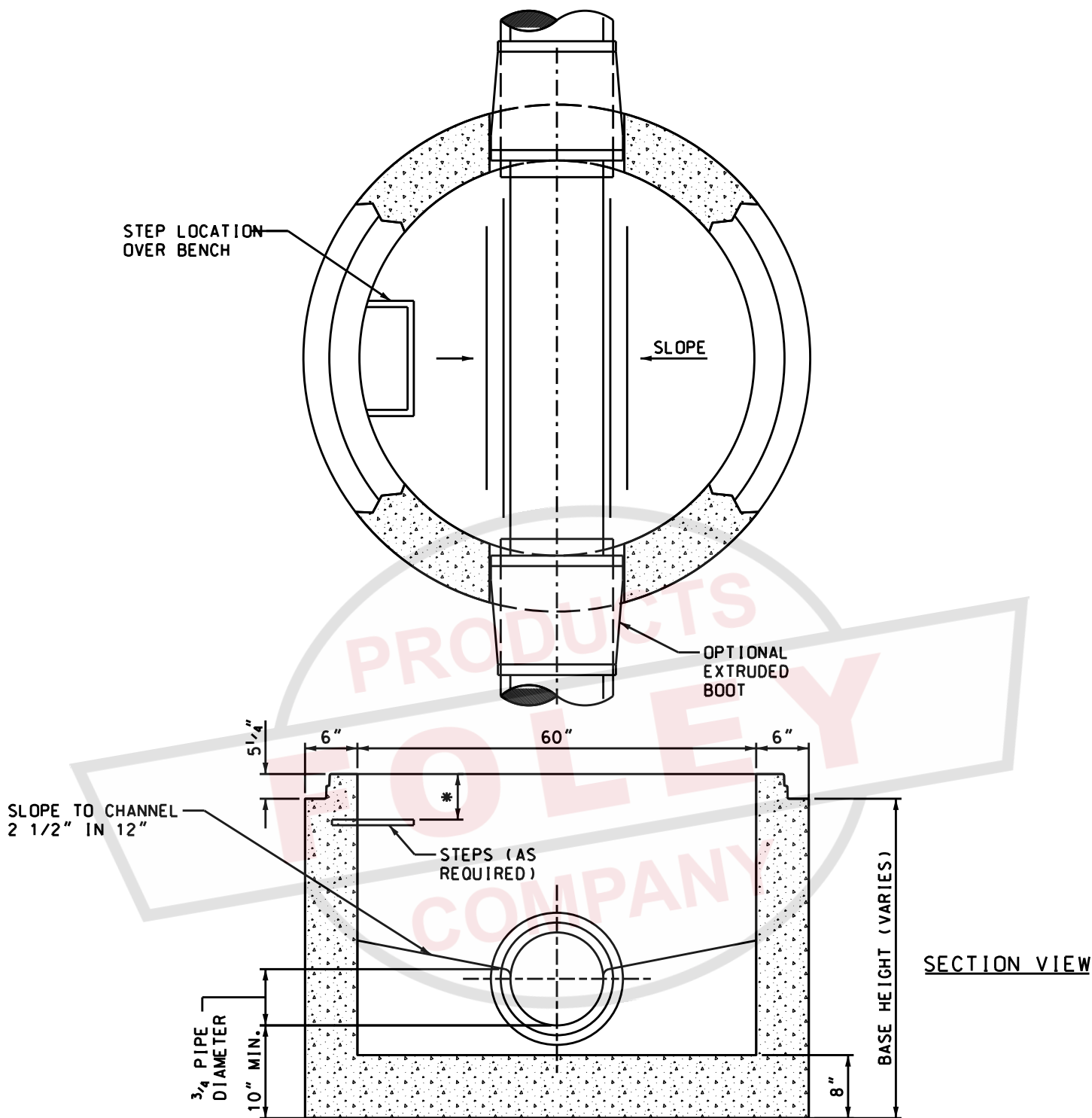
SCALE: NTS

PH# 1-800-737-0707

DWG# RS-416H

DATE: 09/19/18

SHEET# 1 OF 1



GENERAL NOTES:

1. ALL MATERIAL, DESIGN, MANUFACTURE, PHYSICAL TEST REQUIREMENTS, FINISH MARKING, INSPECTION, REJECTION AND REPAIRS TO MEET / OR EXCEED "SPECIFICATIONS FOR PRECAST-REINFORCED CONCRETE MANHOLE SECTIONS", PER ASTM C-478 (LATEST REVISION).
2. CONCRETE COVER ON REBAR: 2" (MIN.)
3. RESILIENT CONNECTORS MEET "SPECIFICATIONS FOR RESILIENT CONNECTORS BETWEEN REINFORCED CONCRETE MANHOLE STRUCTURES, PIPES AND LATERALS", PER ASTM C-923 (LATEST REVISION).
4. INVERT = SMOOTH CHANNEL, LIGHT BRUSH, & NO SHARP TURNS.



60" DIAMETER DEVELOPED BASE MANHOLE

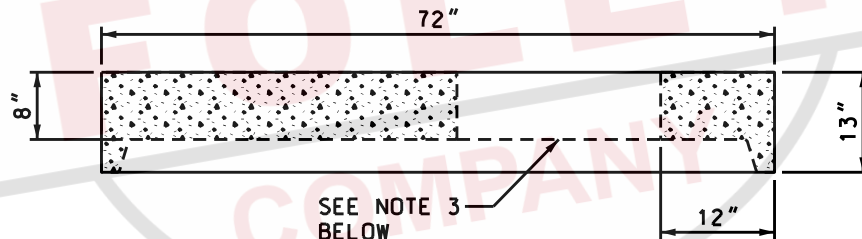
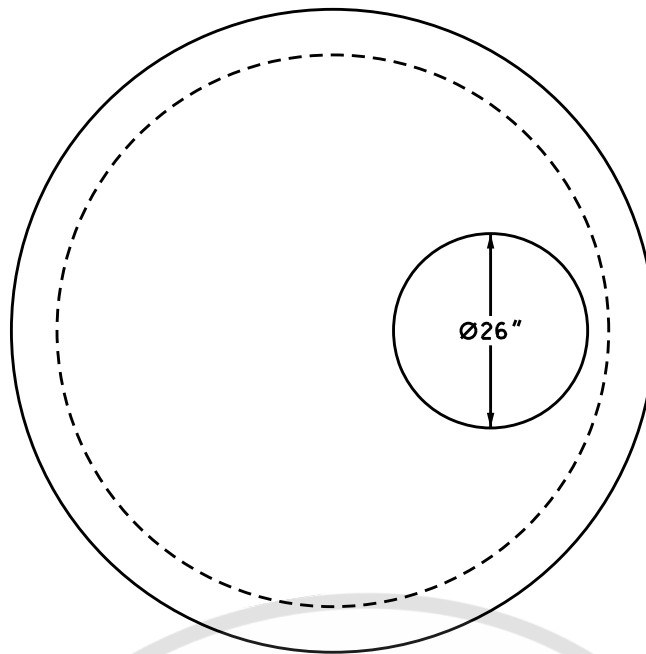
SCALE: NTS

PH# 1-800-737-0707

DWG# RS-417H

DATE: 09/19/18

SHEET# 1 OF 1



STANDARD MANHOLE FLAT TOP

MUST RECEIVE SPECIAL APPROVAL

GENERAL NOTES:

1. ALL MATERIAL, DESIGN, MANUFACTURE, PHYSICAL TEST REQUIREMENTS, FINISH MARKING, INSPECTION, REJECTION AND REPAIRS TO MEET "SPECIFICATIONS FOR PRECAST-REINFORCED CONCRETE MANHOLE SECTIONS", PER ASTM C-478 (LATEST REVISION).
2. CONCRETE STRENGTH PER ASTM C-478. REINFORCING: GRADE 60
3. OTHER HOLE CONFIGURATIONS AVAILABLE.



60" [1500mm] DIAMETER FLAT TOP (HVUD)

SCALE: NTS

PH# 1-800-737-0707

DWG# RS-418H

DATE: 09/19/18

SHEET# 1 OF 1