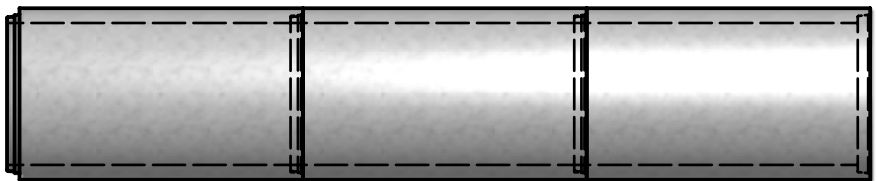
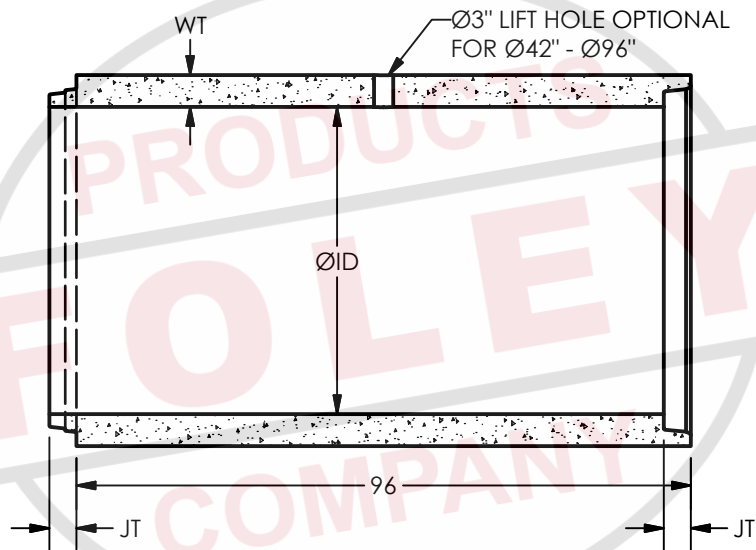


ID	WALL	WT	JT	TONS
42"	C	5.25"	5.00"	3.25
48"	C	5.75"	4.25"	4.05
54"	C	6.25"	4.25"	4.93
60"	C	6.75"	4.75"	5.90
66"	C	7.25"	5.00"	6.95
72"	C	7.75"	5.00"	8.09
78"	C	8.25"	5.00"	9.31
84"	C	8.75"	5.00"	10.62
96"	C	9.75"	5.00"	13.50



**MATERIALS:**

CONCRETE: 4,000 PSI, TYPE I/II CEMENT  
 CONFORMS TO ASTM C-76  
 JOINT CONFORMS TO ASTM C-443

**NOTES:**

AVAILABLE IN CLASS III, IV AND V  
 SEE 3.4 FOR JOINT DETAIL

**PARTS SHOWN:**

Ø48" B-WALL WITH LIFT HOLE



**REINFORCED CONCRETE PIPE**

Ø42" - Ø96" C-WALL PIPE

**3.3**