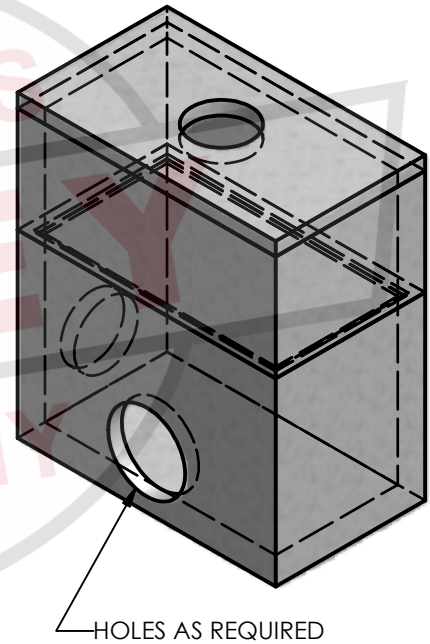
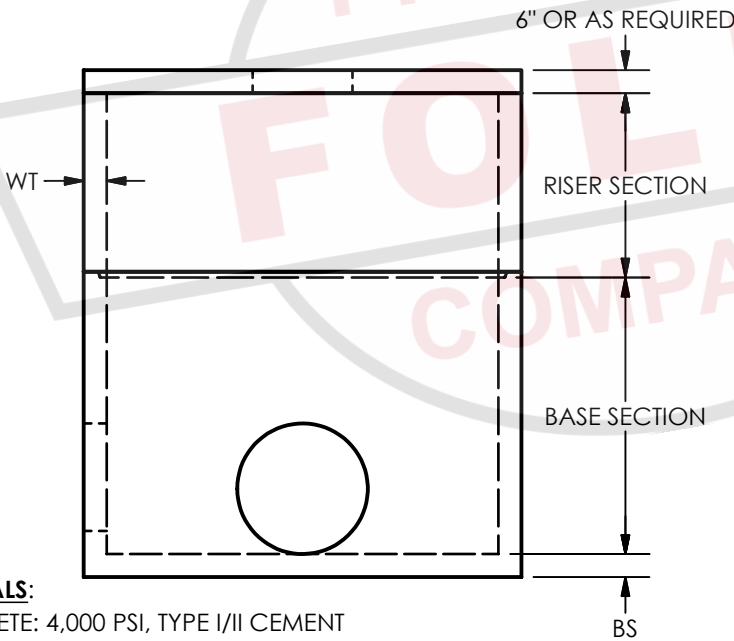
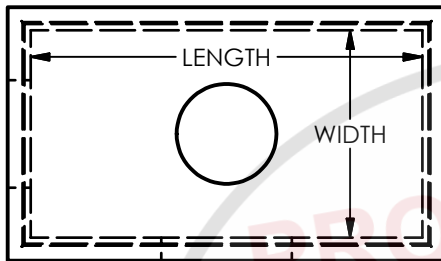


LENGTH	WIDTH	WT	BS	RISER SECTION			BASE SECTION		SLAB TONS
				MIN	MAX	VF TONS	MIN	MAX	
2'-0"	2'-0"	6"	6"	1'-0"	4'-0"	0.38	1'-0"	4'-0"	0.34
4'-0"	2'-0"	6"	6"	1'-0"	4'-0"	0.53	1'-0"	4'-0"	0.56
3'-0"	3'-0"	4"	4"	1'-0"	3'-0"	0.33	1'-0"	3'-0"	0.34
3'-0"	3'-0"	6"	6"	1'-0"	6'-0"	0.53	1'-0"	6'-0"	0.60
4'-0"	4'-0"	6"	6"	1'-0"	6'-0"	0.68	1'-0"	6'-0"	0.94
4'-3"	3'-0"	8"	8"	1'-0"	4'-0"	0.86	1'-0"	4'-0"	1.21
5'-0"	5'-0"	6"	6"	1'-0"	6'-0"	0.83	1'-0"	6'-0"	1.35
6'-0"	6'-0"	6"	6"	1'-0"	8'-0"	0.98	1'-0"	8'-0"	1.84
8'-0"	8'-0"	6"	6"	1'-0"	5'-0"	1.28	1'-0"	5'-0"	3.04
8'-6"	4'-6"	6"	6"	1'-0"	6'-0"	1.05	1'-0"	6'-0"	1.96
8'-0"	6'-0"	6"	6"	1'-0"	6'-0"	1.13	1'-0"	6'-0"	2.36
10'-0"	3'-0"	8"	8"	1'-0"	5'-0"	1.43	1'-0"	5'-0"	2.46
10'-0"	5'-0"	6"	6"	1'-6"	6'-0"	1.20	1'-0"	6'-0"	2.48
12'-0"	6'-0"	6"	6"	1'-6"	6'-0"	1.43	1'-0"	6'-0"	3.41



**MATERIALS:**

CONCRETE: 4,000 PSI, TYPE I/II CEMENT  
 MANUFACTURED TO ASTM C-913  
 GRADE 60 REINFORCEMENT

**NOTES:**

PULL-IN-IRONS, SUMPS, INSERTS AND OTHER HARDWARE  
 AVAILABLE FOR SPECIAL UTILITY APPLICATIONS  
 AASHTO H20 DESIGN LOADING AVAILABLE

**PARTS SHOWN:**

- 9'-6" L x 5'-6" W x 6" THICK SLAB TOP WITH Ø26"
- 8'-6" L x 4'-6" W x 4'-0" H 6" WALL RISER
- 8'-6" L x 4'-6" W x 6'-0" H 6" WALL 6" THICK BASE
- Ø34" HOLE AT 0°
- Ø28" HOLE AT 90° UP 6"



**BOX**

STANDARD BOX FORMS

**2.3**