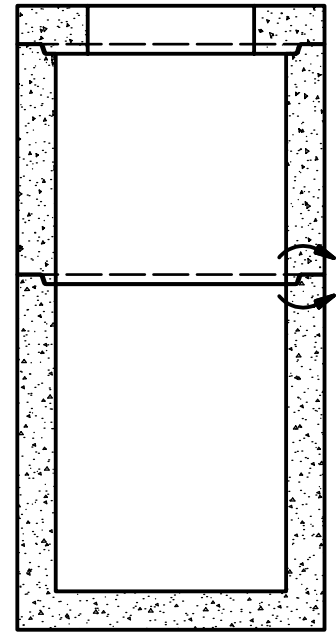
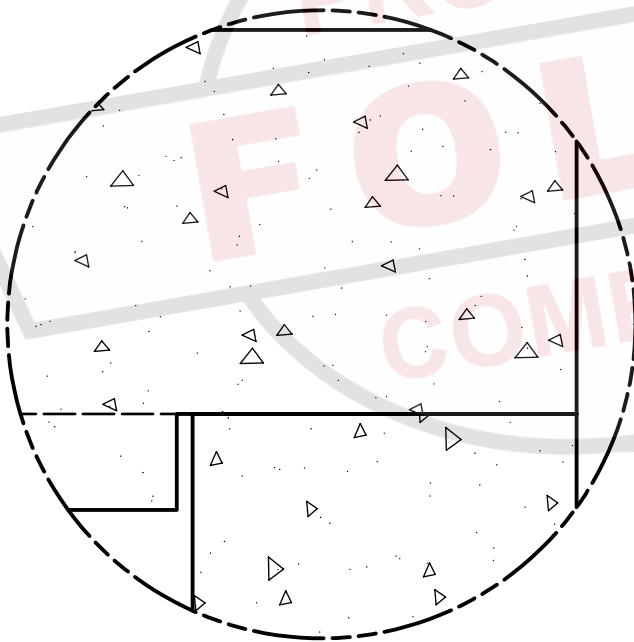


STEEL FORM RISER JOINT

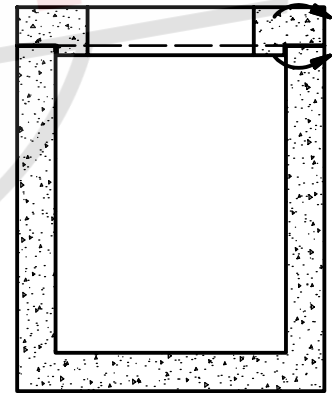


**PARTS SHOWN:**

- 4'-0" L x 4'-0" W x 6" THICK JOINTED TOP WITH Ø26"
- 3'-0" L x 3'-0" W x 3'-0" H 6" WALL RISER
- 3'-0" L x 3'-0" W x 4'-0" H 6" WALL 6" THICK BASE



SYMONS FORM TOP JOINT



**PARTS SHOWN:**

- 4'-0" L x 4'-0" W x 6" THICK JOINTED SLAB TOP WITH Ø26"
- 3'-0" L x 3'-0" W x 4'-0" H 6" WALL 6" THICK BASE

**MATERIALS:**

CONCRETE: 4,000 PSI, TYPE I/II CEMENT  
 MANUFACTURED TO ASTM C-913



**BOX**

TYPICAL BOX JOINTS

**2.1**