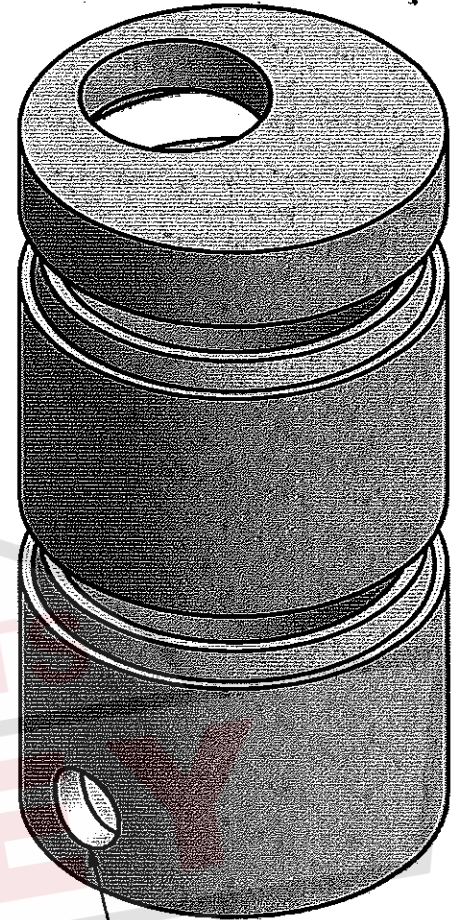
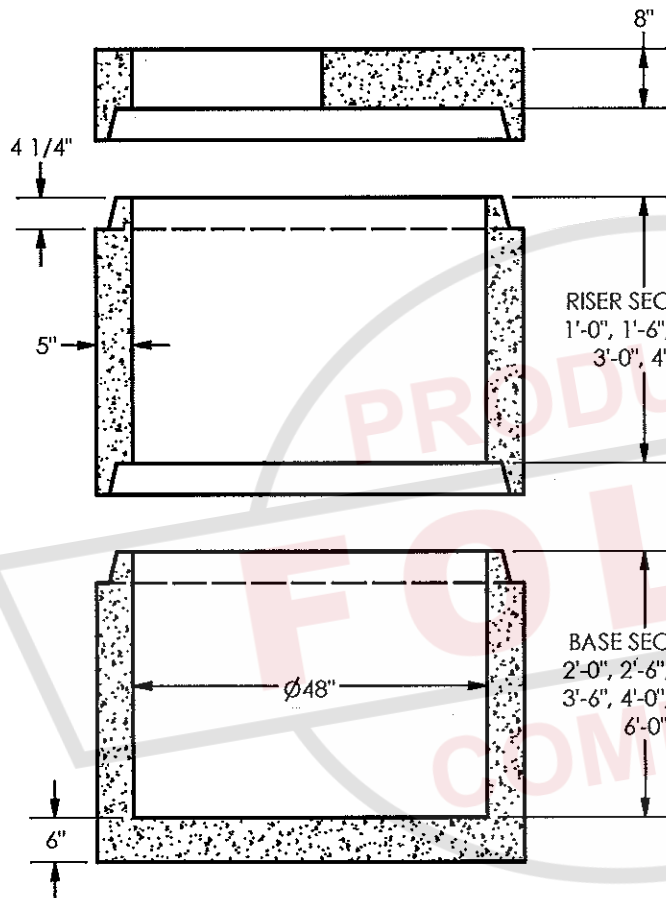


	TONS
BASE SLAB	0.69
VF	0.43
FLAT TOP	0.92



HOLES AS REQUIRED

MATERIALS:

CONCRETE: 4,000 PSI, TYPE I/II CEMENT
 REINFORCEMENT PER ASTM C-478

NOTES:

FLEXIBLE CONNECTORS ARE AVAILABLE

PARTS SHOWN:

- Ø48" (5") FLAT TOP
- Ø48" (5") 3'-0" RISER
- Ø48" (5") 3'-0" BASE W/ Ø12" HOLE



ROUND PRECAST

Ø48" (5") BASES & RISERS, FLAT TOP

1.1