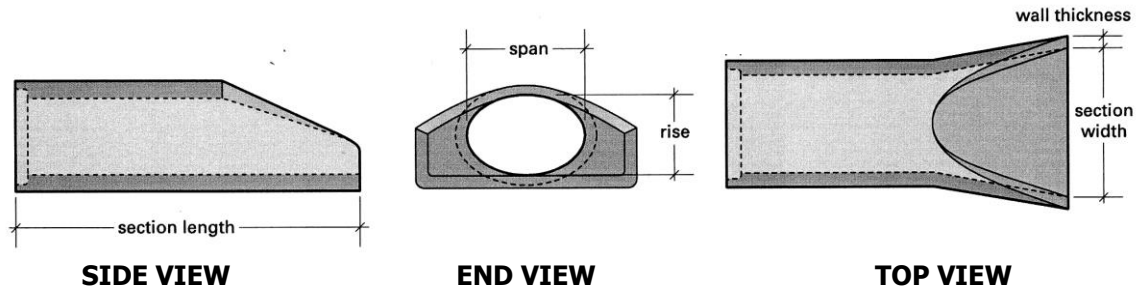


Horizontal Elliptical Reinforced Concrete Pipe

Flared End Sections



Circular Equivalent (inches)	Internal Rise x Span (inches)	Wall Thickness (inches)	Section Length (feet)	Section Width (inches)	A dimension * (inches)	C dimension * (inches)
18	14 X 23	2.75	6.5	36	7	52
24	19 X 30	3.25	6.5	48	8	40
30	24 X 38	3.75	6.5	60	10	18
36	29 X 45	4.5	8	72	11	33
42	34 X 53	5	8	78	16	32
48	38 X 60	5.5	8	84	21	32
54	43 X 68	Please call Foley Products Company for more information				
60	48 X 76	Please call Foley Products Company for more information				

- Flared Ends not available for Vertical Elliptical Reinforced Concrete Pipe (VERCP).
- Additional information available upon request, product data subject to change without notice
- Flared End Sections to be produced with concrete meeting CDOT Class 0 sulfate resistance. The engineer shall confirm that this level of sulfate resistance is adequate to meet project requirements and notify Foley Products Company if a higher level of sulfate resistance is needed.

* A dimension and C dimension are as defined by CDOT M603-10. Dimensions shown here may vary from CDOT M603-10.



Denver Pipe Plant
 8311 West Carder Court
 Littleton, Colorado 80125
 303.791.1600